

1109 Medium Duty/Low Profile Business Machine Caster Series



Anti-static ZQPU Wheel (milling black) Wheel Diameter x Wheel Width 50 x 20 (41.5) mm

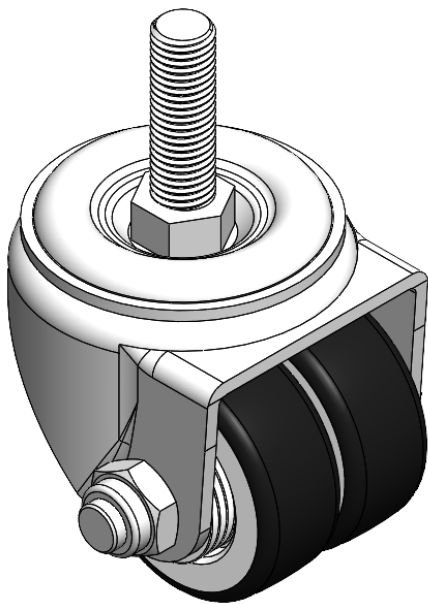
EAN

YJ-11090200805033

Swivel Caster with Riveted Stamping Fork—3/8"-16UNC Zine-Plated, Mounting Type - Threaded Stem Cast Iron Wheel Center, High Quality Polyurethane tread Black, Ball Bearing.

Wheel surface: high quality polyurethane
Wheel Center: cast iron core

Drawings are for reference only and may differ from the product



Picture may differ from original product

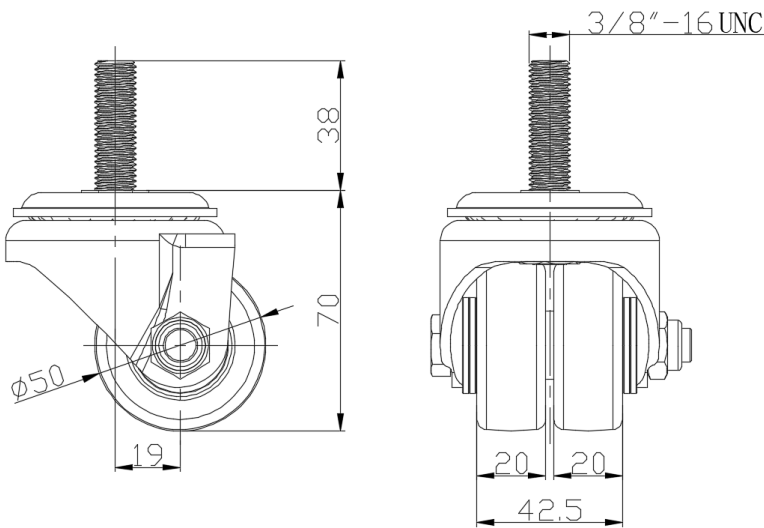
Technical Data

<input checked="" type="radio"/> Metric <input type="radio"/> Imperial	
Wheel Diameter	50mm
Wheel Width	42.5mm
Wheel Bearing	Wheels With Ball Bearings
Threaded Stem	3/8 " -16UNC
Threaded Size	38mm
Offset	19mm
Swivel Interference	94mm
Overall Height	70mm
Swivel Radius	47mm
Hardness Of Tread	82±5° Shore A
Load Capacity (Dynamic)	100kgs
Load Capacity (Static)	150kgs
Temperature	-20°C to +70°C
Fork Type	Swivel Caster
Stainless	N/A
Electrical Conductivity	N/A
Anti-Static	Y 10^6/~10^9/Ω
Weight	0.95kgs
Standard	ISO22883

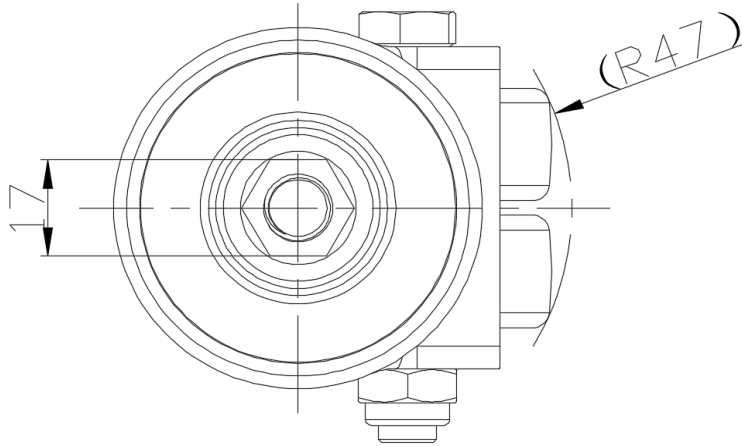
Advantages at a glance

Rolling Resistance	● ● ● ● ●
Operating Noise	● ● ● ● ●
Floor Surface Preservation	● ● ● ● ●

Dimensions



Mounting



* For any deviation between metric and imperial spec, please refer to the metric spec.