

1109 Medium Duty/Low Profile Business Machine Caster Series



Rubber Wheel Diameter × Wheel Width 65 x 42mm

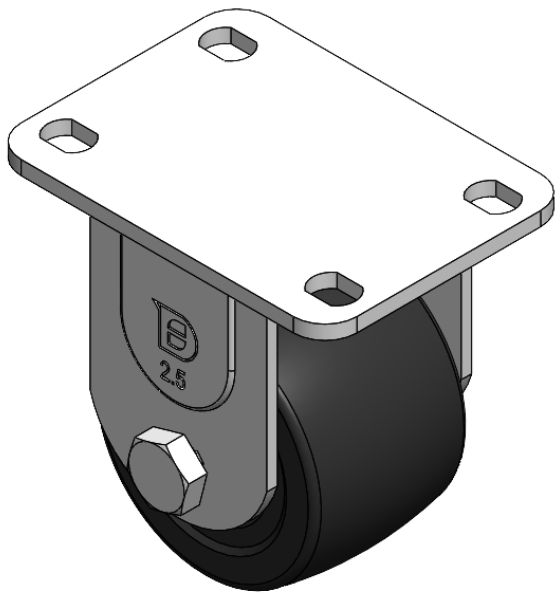
EAN

YJ-11090250051413

Rigid castor, Welded footplate - 75 x 45 mm (3" x 1-3/4") Bolt Hole Spacing Extended control lever surface, Mounting Type - Top Plate Reinforced Polypropylene, High-Quality Resilient Rubber Wheel Tread Bearing - Ball Bearing.

Wheel Tread: high quality elastic rubber
Wheel Center: Thermoplastic (PA6)

Drawings are for reference only and may differ from the product



Picture may differ from original product

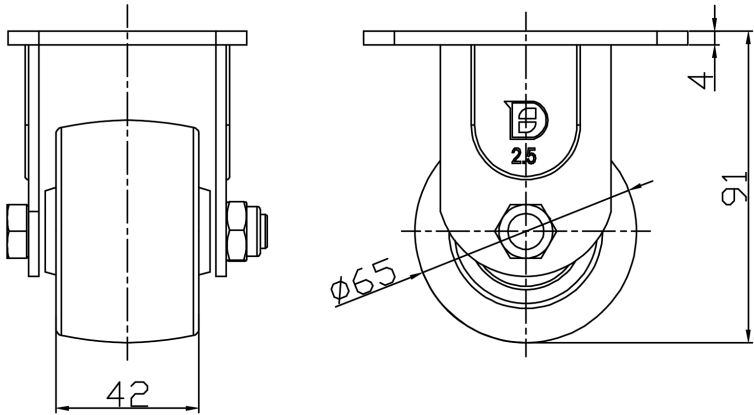
Technical Data

<input checked="" type="radio"/> Metric <input type="radio"/> Imperial	
Wheel Diameter	65mm
Wheel Width	42mm
Wheel Bearing	Wheels With Ball Bearings
Plate Size	95 x 70mm
Bolt Hole Spacing	75 x 45mm
Plate Hole	12 x 9mm
Overall Height	91mm
Hardness Of Tread	80±5° Shore A
Load Capacity (Dynamic)	70kgs
Load Capacity (Static)	105kgs
Temperature	-20°C to +120°C
Fork Type	Rigid Caster
Stainless	N/A
Electrical Conductivity	N/A
Anti-Static	N/A
Weight	0.62kgs
Standard	ISO22883

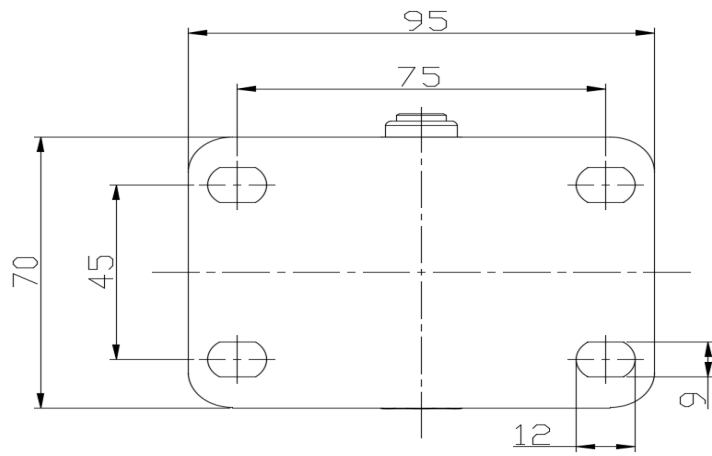
Advantages at a glance

Rolling Resistance	● ● ● ○ ○
Operating Noise	● ● ● ● ○
Floor Surface Preservation	● ● ● ● ○

Dimensions



Mounting



* For any deviation between metric and imperial spec, please refer to the metric spec.