

Product Data Sheet

1165-6 AMR/AGV- 6 Pressed Steel Caster - Dual Wheel Series (Medium/Light Duty)



ZQPU grinding wheel (milling brown) wheel diameter × wheel width 62.5 × 20 (41.5) mm

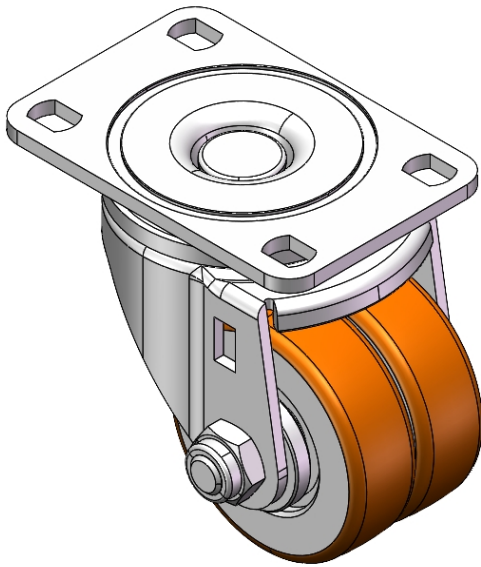
EAN

YJ-11090250802073

Swivel Caster with Riveted Fork and Stamping Fork – 75 x 45 mm (3" x 1-3/4") Bolt Hole Spacing
Zine-Plated, Top Plateed Mounting Type
Cast Iron core, High Quality Polyurethane Wheel Tread
Brown color, Bearing – Ball Bearings.

Wheel tread: high quality polyurethane
Wheel Center: cast iron core

Drawings are for reference only and may differ from the product



Picture may differ from original product

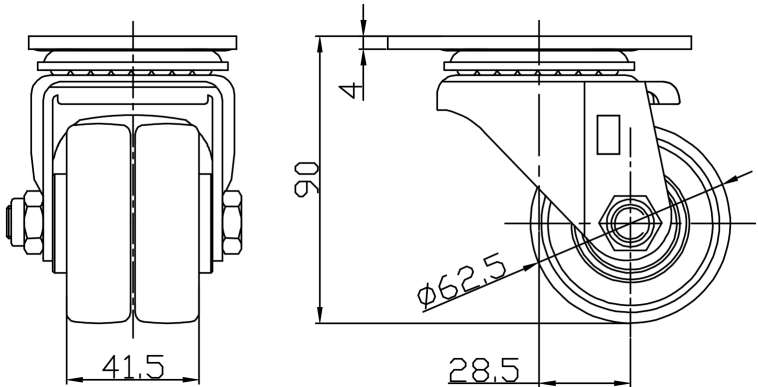
Technical Data

<input checked="" type="radio"/> Metric <input type="radio"/> Imperial	
Wheel Diameter	62.5mm
Wheel Width	41.5mm
Wheel Bearing	Wheels With Ball Bearings
Plate Size	95 x 65mm
Bolt Hole Spacing	75 x 45mm
Plate Hole	12 x 9mm
Offset	28.5mm
Swivel Interference	124mm
Overall Height	90mm
Swivel Radius	62mm
Hardness Of Tread	87±5° Shore A
Load Capacity (Dynamic)	400kgs
Load Capacity (Static)	600kgs
Temperature	-20°C to +70°C
Fork Type	Swivel Caster
Stainless	N/A
Electrical Conductivity	N/A
Anti-Static	N/A
Weight	1.26kgs
Standard	ISO22883

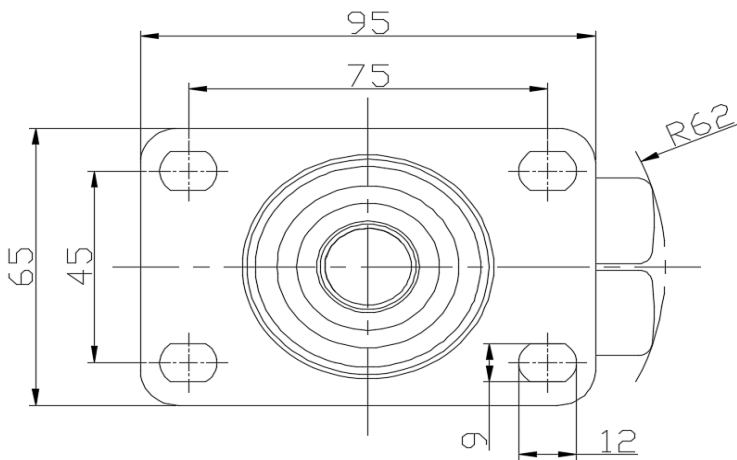
Advantages at a glance

Rolling Resistance	● ● ● ● ●
Operating Noise	● ● ● ● ●
Floor Surface Preservation	● ● ● ● ●

Dimensions



Mounting



* For any deviation between metric and imperial spec, please refer to the metric spec.