

1109 Medium Duty/Low Profile Business Machine Caster Series



MRC (black) Wheel Diameter × Wheel Width 75 x 45 mm

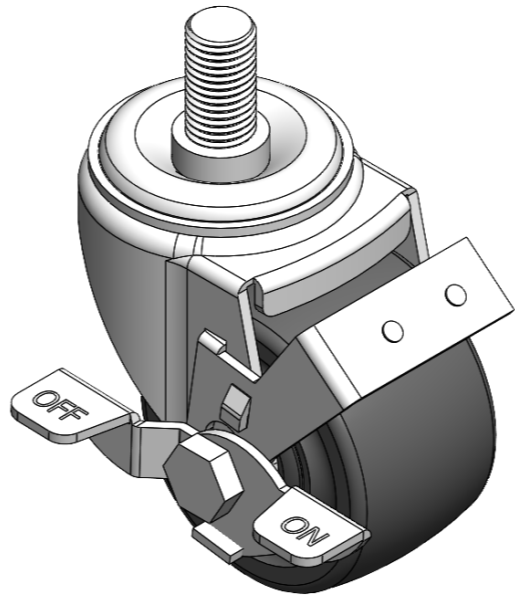
EAN

YJ-11090300056933

Side Brake Locking system Thread-Riveted Stamping Fork – M16-P2 Zine-Plated, Mounting Type - Threaded Stem Reinforced Polypropylene and tread Black, Bearing – Ball Bearing.

Wheel surface: Thermoplastic (PA6)  
Wheel Center: Thermoplastic (PA6)

Drawings are for reference only and may differ from the product



Picture may differ from original product

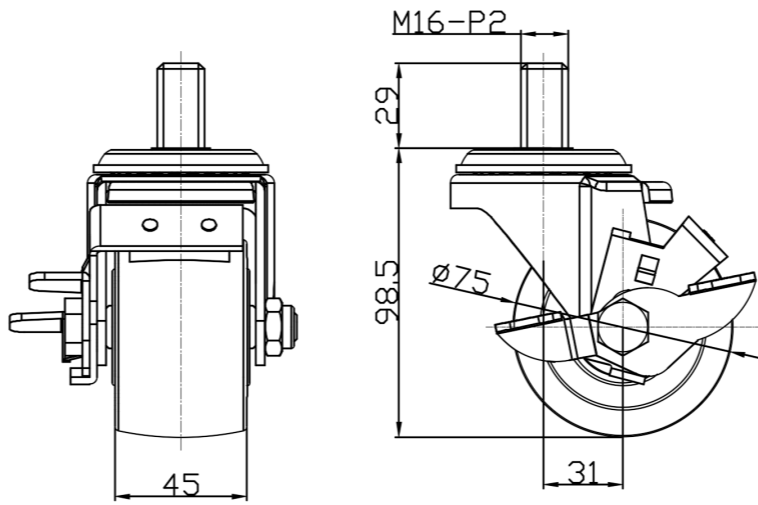
Technical Data

<input checked="" type="radio"/> Imperial <input type="radio"/> Metric	
Wheel Diameter	3 "
Wheel Width	1-13/16 "
Wheel Bearing	Wheels With Ball Bearings
Threaded Stem	M16-P2
Threaded Size	1-3/16 "
Offset	1-1/4 "
Swivel Interference	7 "
Overall Height	3-15/16 "
Swivel Radius	3-1/2 "
Hardness Of Tread	75±5° Shore D
Load Capacity (Dynamic)	661lbs
Load Capacity (Static)	992lbs
Temperature	-4°F to +176°F
Fork Type	Swivel Caster With Side Brake
Stainless	N/A
Electrical Conductivity	N/A
Anti-Static	N/A
Weight	1.8lbs
Standard	ISO22883

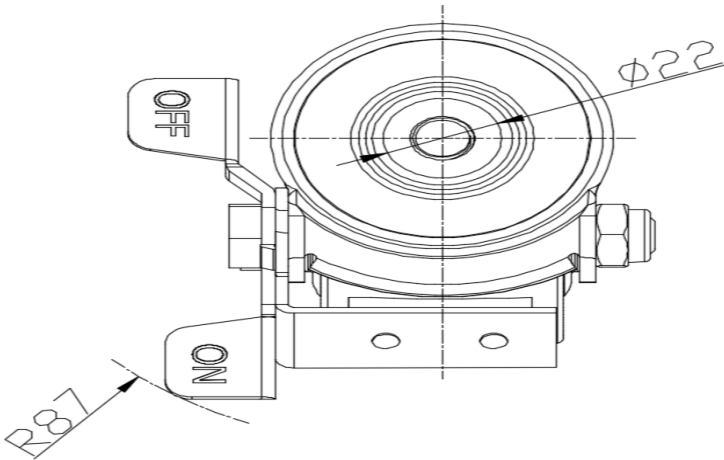
Advantages at a glance

Rolling Resistance	● ● ● ● ●
Operating Noise	● ● ○ ○ ○
Floor Surface Preservation	● ● ○ ○ ○

Dimensions



Mounting



\* For any deviation between metric and imperial spec, please refer to the metric spec.