

1109 Medium Duty/Low Profile Business Machine Caster Series



King Kong Wheel (black) Wheel Diameter × Wheel Width 75×45 mm

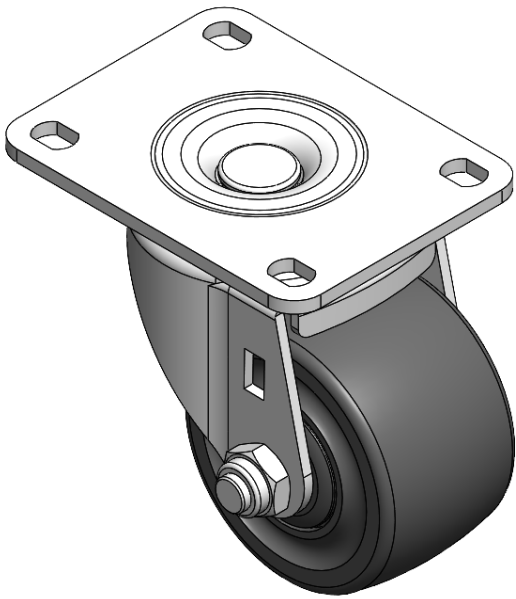
EAN

YJ-11090300712013

Swivel Casters, Riveted and Stamping Top Plate—Bolt Hole Spacing 81 x 59  
Zine-Plated surface, Mounting Type - Top Plate device  
Reinforced Polypropylene and Wheel Tread  
Black, Bearing—Ball Bearings.

Wheel surface: Thermoplastic (POK)  
Wheel Center: Thermoplastic (POK)

Drawings are for reference only and may differ from the product



Picture may differ from original product

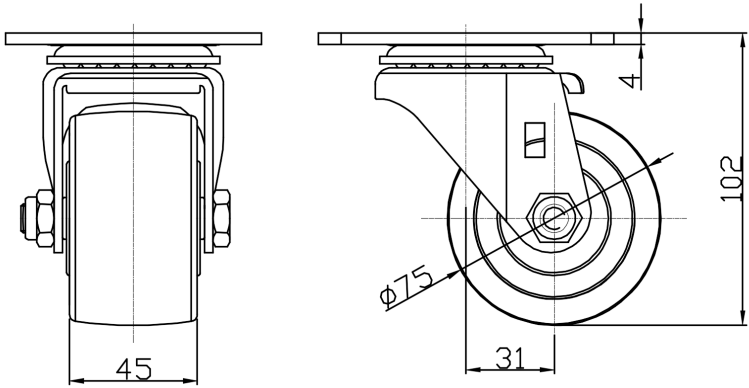
Technical Data

<input checked="" type="radio"/> Metric <input type="radio"/> Imperial	
Wheel Diameter	75mm
Wheel Width	45mm
Wheel Bearing	Wheels With Ball Bearings
Plate Size	104 x 80mm
Bolt Hole Spacing	81 x 59mm
Plate Hole	12 x 9mm
Offset	31mm
Swivel Interference	140mm
Overall Height	102mm
Swivel Radius	70mm
Hardness Of Tread	75±5° Shore D
Load Capacity (Dynamic)	500kgs
Load Capacity (Static)	750kgs
Temperature	-20°C to +80°C
Fork Type	Swivel Caster
Stainless	N/A
Electrical Conductivity	N/A
Anti-Static	N/A
Weight	0.9kgs
Standard	ISO22883

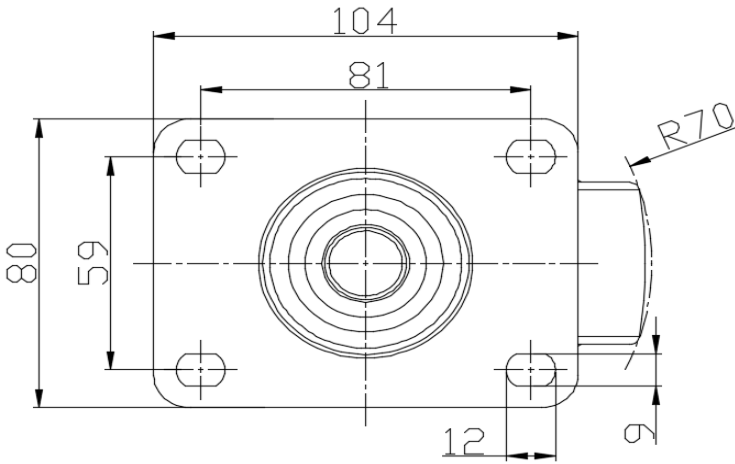
Advantages at a glance

Rolling Resistance	● ● ● ● ●
Operating Noise	● ● ○ ○ ○
Floor Surface Preservation	● ● ○ ○ ○

Dimensions



Mounting



\* For any deviation between metric and imperial spec, please refer to the metric spec.