

1109 Medium Duty/Low Profile Business Machine Caster Series



King Kong Wheel (black) Wheel Diameter × Wheel Width 75×45 mm

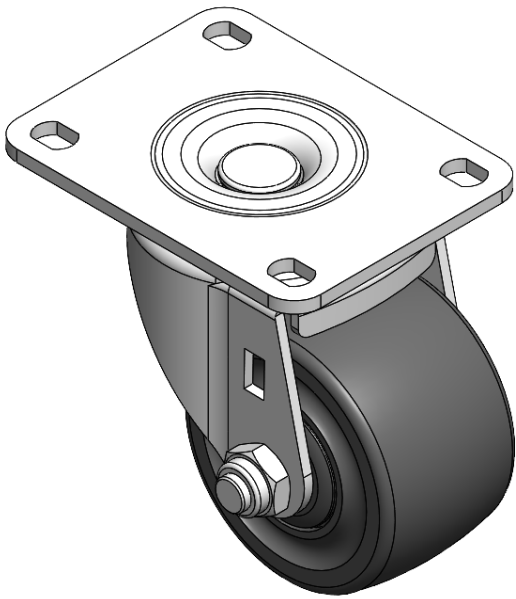
EAN

YJ-11090300712013

Swivel Casters, Riveted and Stamping Top Plate—Bolt Hole Spacing 81 x 59
Zine-Plated surface, Mounting Type - Top Plate device
Reinforced Polypropylene and Wheel Tread
Black, Bearing—Ball Bearings.

Wheel surface: Thermoplastic (POK)
Wheel Center: Thermoplastic (POK)

Drawings are for reference only and may differ from the product



Picture may differ from original product

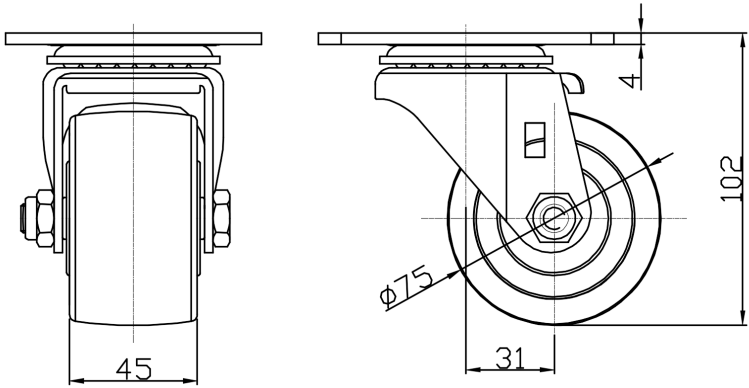
Technical Data

<input checked="" type="radio"/> Imperial <input type="radio"/> Metric	
Wheel Diameter	3 "
Wheel Width	1-13/16 "
Wheel Bearing	Wheels With Ball Bearings
Plate Size	4-1/8 " x 3-3/16 "
Bolt Hole Spacing	2-1/4 " x 2-3/8 "
Plate Hole	1/2 " x 23/64 "
Offset	1-1/4 "
Swivel Interference	5-9/16 "
Overall Height	4-1/16 "
Swivel Radius	2-13/16 "
Hardness Of Tread	75±5° Shore D
Load Capacity (Dynamic)	1102lbs
Load Capacity (Static)	1653lbs
Temperature	-4°F to +176°F
Fork Type	Swivel Caster
Stainless	N/A
Electrical Conductivity	N/A
Anti-Static	N/A
Weight	2.0lbs
Standard	ISO22883

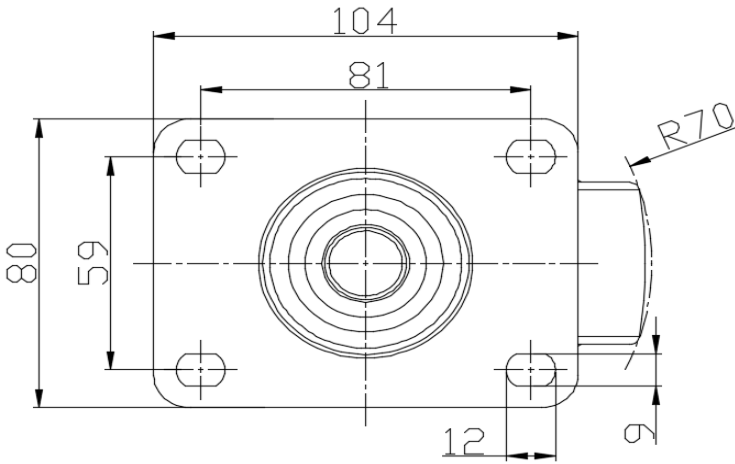
Advantages at a glance

Rolling Resistance	● ● ● ● ●
Operating Noise	● ● ○ ○ ○
Floor Surface Preservation	● ● ○ ○ ○

Dimensions



Mounting



* For any deviation between metric and imperial spec, please refer to the metric spec.