



1110-2 Light Duty Wire & Shelving/Display Series

PU (black transparent) Wheel Diameter × Wheel Width 48 × 23.5mm

EAN

YJ-11100200952014

Swivel Caster with Riveted Fork and Stamping Fork with 85 x 70mm (3-3/8" x 2-3/4") Bolt Hole Spacings.
Electroplated surface, Mounting Type - Top Plate.
Polypropylene core with High Quality Polyurethane Wheel Tread.
Translucent black finish. Bearings: Ball Bearings.

Wheel surface: high quality polyurethane
Wheel Center:Polypropylene

Drawings are for reference only and may differ from the product



Picture may differ from original product

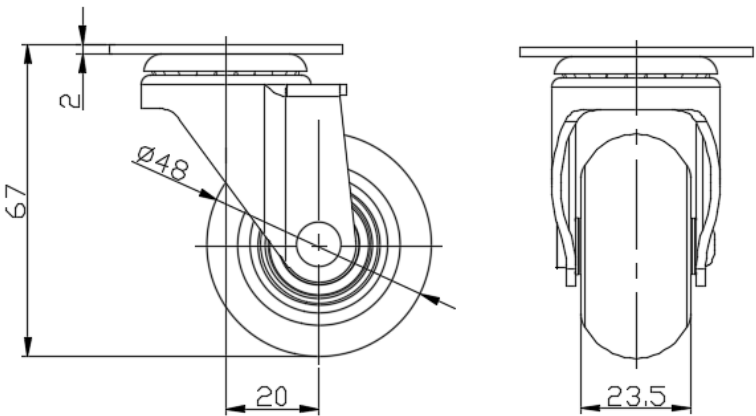
Technical Data

<input checked="" type="radio"/> Imperial <input type="radio"/> Metric	
Wheel Diameter	1-15/16 "
Wheel Width	15/16 "
Wheel Bearing	Wheels With Ball Bearings
Plate Size	2 " x 2 "
Bolt Hole Spacing	1-3/8
Plate Hole	1/2 " x 1/4 "
Offset	13/16 "
Swivel Interference	3-1/2 "
Overall Height	2-11/16 "
Swivel Radius	1-3/4 "
Hardness Of Tread	80±5° Shore A
Load Capacity (Dynamic)	66lbs
Load Capacity (Static)	99lbs
Temperature	-4°F to +158°F
Fork Type	Swivel Caster
Stainless	N/A
Electrical Conductivity	N/A
Anti-Static	N/A
Weight	0.4lbs
Standard	ISO22883

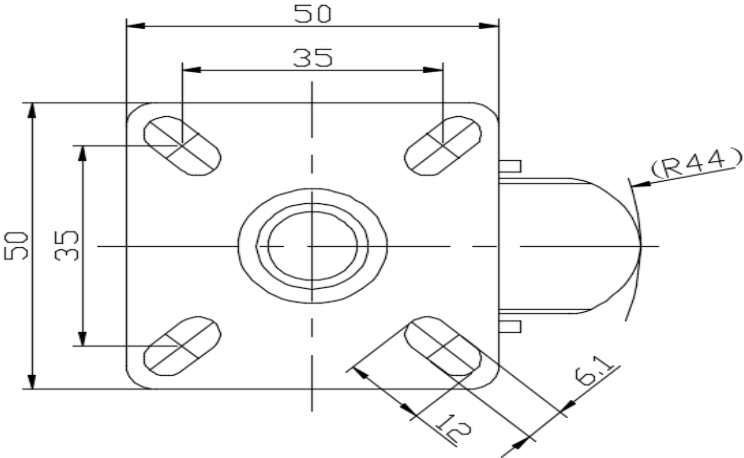
Advantages at a glance

Rolling Resistance	● ● ● ● ●
Operating Noise	● ● ● ● ●
Floor Surface Preservation	● ● ● ● ●

Dimensions



Mounting



* For any deviation between metric and imperial spec, please refer to the metric spec.