

1110-2 Light Duty Wire & Shelving/Display Series



PU (black transparent) Wheel Diameter × Wheel Width 48 × 23.5mm

EAN

YJ-11100200954014

Casters with a Wheel Brake With locking system. Top Plate with Riveted, Stamping Fork and 85 x 70mm (3-3/8" x 2-3/4") Bolt Hole Spacings. Electroplated surface, Mounting Type - Top Plate. Polypropylene Wheel Center with High Quality Polyurethane Wheel Tread. Translucent black finish. Bearings with Ball Bearings.

Wheel surface: high quality polyurethane
Wheel Center:Polypropylene

Drawings are for reference only and may differ from the product



Picture may differ from original product

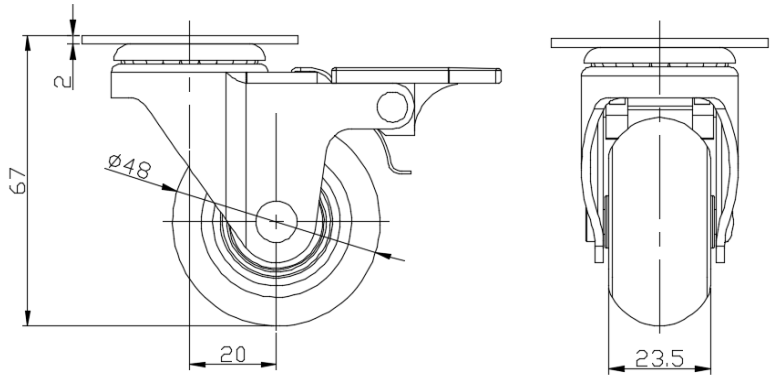
Technical Data

| | |
|--|--------------------------------|
| <input checked="" type="radio"/> Metric <input type="radio"/> Imperial | |
| Wheel Diameter | 48mm |
| Wheel Width | 23.5mm |
| Wheel Bearing | Wheels With Ball Bearings |
| Plate Size | 50 x 50mm |
| Bolt Hole Spacing | 35 x 35mm |
| Plate Hole | 12 x 6.1mm |
| Offset | 20mm |
| Swivel Interference | 146mm |
| Overall Height | 67mm |
| Swivel Radius | 73mm |
| Hardness Of Tread | 80±5° Shore A |
| Load Capacity (Dynamic) | 30kgs |
| Load Capacity (Static) | 45kgs |
| Temperature | -20°C to +70°C |
| Fork Type | Swivel Caster With Wheel Brake |
| Stainless | N/A |
| Electrical Conductivity | N/A |
| Anti-Static | N/A |
| Weight | 0.22kgs |
| Standard | ISO22883 |

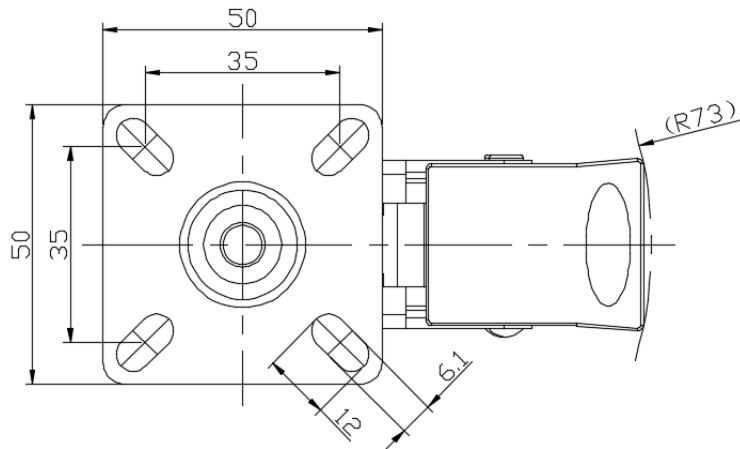
Advantages at a glance

| | |
|----------------------------|-----------|
| Rolling Resistance | ● ● ● ● ● |
| Operating Noise | ● ● ● ● ● |
| Floor Surface Preservation | ● ● ● ● ● |

Dimensions



Mounting



* For any deviation between metric and imperial spec, please refer to the metric spec.