



1110-2 Light Duty Wire & Shelving/Display Series

PU (black transparent) Wheel Diameter × Wheel Width 48 × 23.5mm

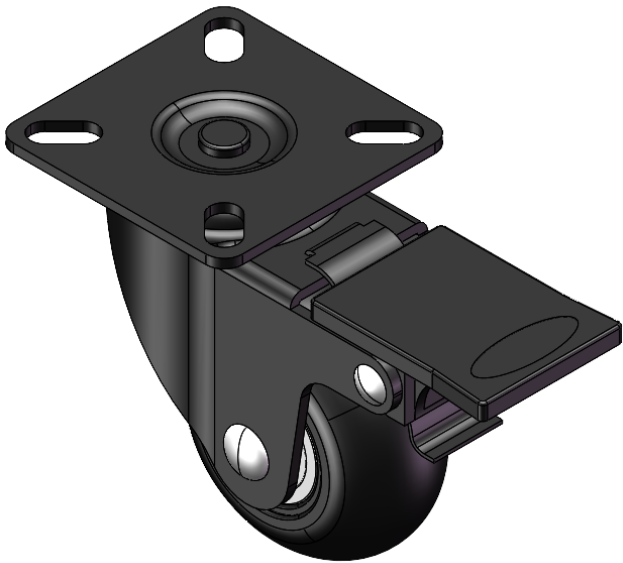
EAN

YJ-11100200954014

Casters with a Wheel Brake With locking system. Top Plate with Riveted, Stamping Fork and 85 x 70mm (3-3/8" x 2-3/4") Bolt Hole Spacings. Electroplated surface, Mounting Type - Top Plate. Polypropylene Wheel Center with High Quality Polyurethane Wheel Tread. Translucent black finish. Bearings with Ball Bearings.

Wheel surface: high quality polyurethane  
Wheel Center:Polypropylene

Drawings are for reference only and may differ from the product



Picture may differ from original product

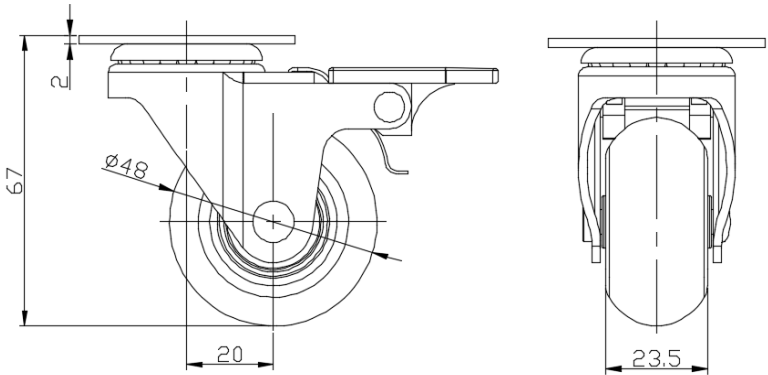
Technical Data

<input checked="" type="radio"/> Imperial <input type="radio"/> Metric	
Wheel Diameter	1-15/16 "
Wheel Width	15/16 "
Wheel Bearing	Wheels With Ball Bearings
Plate Size	2 " x 2 "
Bolt Hole Spacing	1-3/8
Plate Hole	1/2 " x 1/4 "
Offset	13/16 "
Swivel Interference	5-13/16 "
Overall Height	2-11/16 "
Swivel Radius	2-15/16 "
Hardness Of Tread	80±5° Shore A
Load Capacity (Dynamic)	66lbs
Load Capacity (Static)	99lbs
Temperature	-4°F to +158°F
Fork Type	Swivel Caster With Wheel Brake
Stainless	N/A
Electrical Conductivity	N/A
Anti-Static	N/A
Weight	0.5lbs
Standard	ISO22883

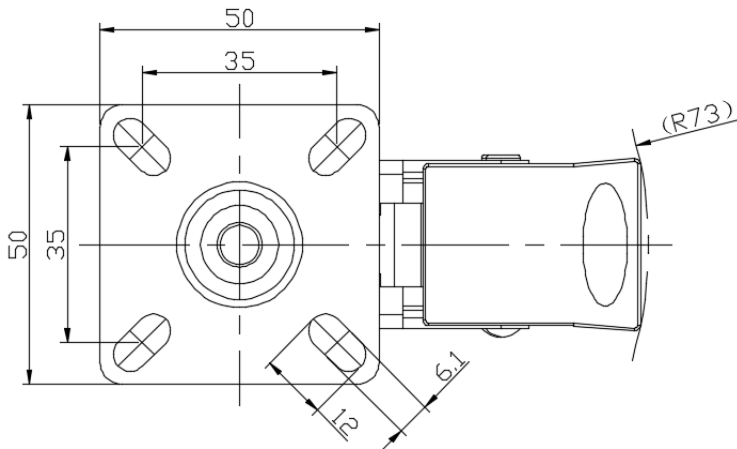
Advantages at a glance

Rolling Resistance	● ● ● ● ●
Operating Noise	● ● ● ● ●
Floor Surface Preservation	● ● ● ● ●

Dimensions



Mounting



\* For any deviation between metric and imperial spec, please refer to the metric spec.