

1110-2 Light Duty Wire & Shelving/Display Series



PU (black transparent) Wheel Diameter × Wheel Width 48 × 23.5mm

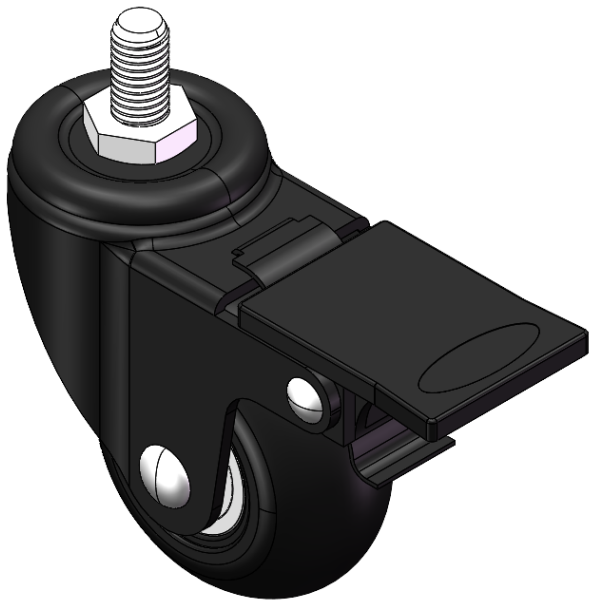
EAN

YJ-11100200956014

Casters with a single-brake With locking system. Threaded Stem Riveted Pressed Fork—M8- P1.25  
Surface electroplating, Mounting Type - Threaded Stem  
Polypropylene core, High Quality Polyurethane Wheel Tread  
Translucent black finish, Bearing—Ball Bearings.

Wheel surface: high quality polyurethane  
Wheel Center:Polypropylene

Drawings are for reference only and may differ from the product



Picture may differ from original product

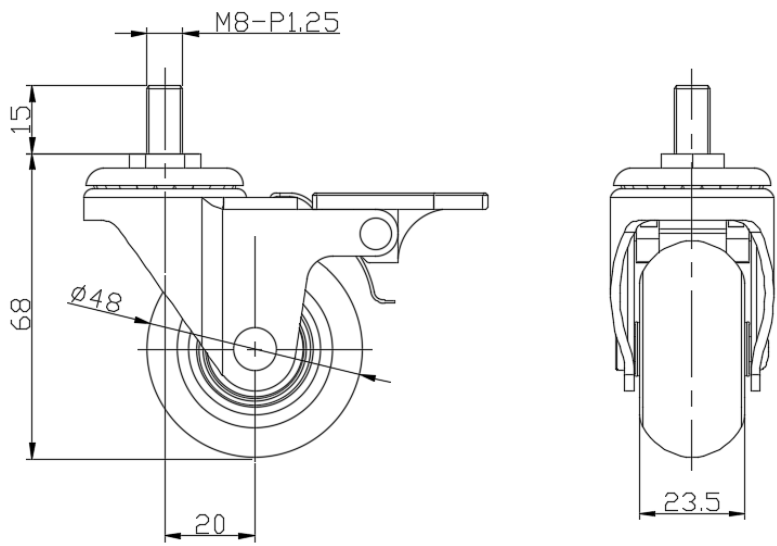
Technical Data

<input checked="" type="radio"/> Metric <input type="radio"/> Imperial	
Wheel Diameter	48mm
Wheel Width	23.5mm
Wheel Bearing	Wheels With Ball Bearings
Threaded Stem	M8-P1.25
Threaded Size	15mm
Offset	20mm
Swivel Interference	146mm
Overall Height	68mm
Swivel Radius	73mm
Hardness Of Tread	80±5° Shore A
Load Capacity (Dynamic)	30kgs
Load Capacity (Static)	45kgs
Temperature	-20°C to +70°C
Fork Type	Swivel Caster With Wheel Brake
Stainless	N/A
Electrical Conductivity	N/A
Anti-Static	N/A
Weight	0.16kgs
Standard	ISO22883

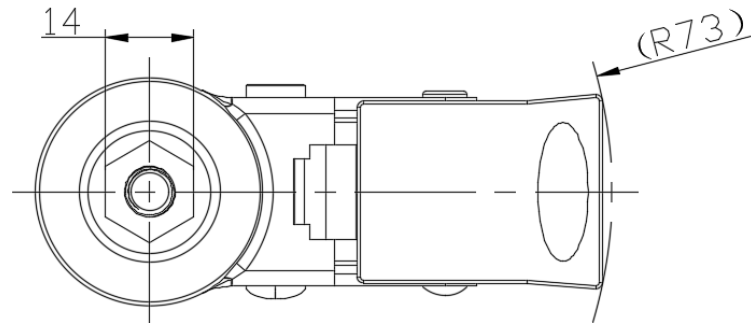
Advantages at a glance

Rolling Resistance	● ● ● ● ●
Operating Noise	● ● ● ● ●
Floor Surface Preservation	● ● ● ● ●

Dimensions



Mounting



\* For any deviation between metric and imperial spec, please refer to the metric spec.