



1110-2 Light Duty Wire & Shelving/Display Series

PU (black transparent) Wheel Diameter × Wheel Width 64 × 23.5mm

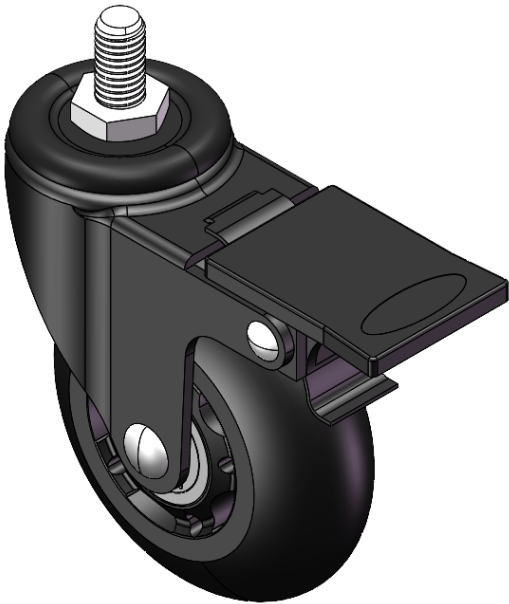
EAN

YJ-11100250956014

Casters with a single brake and With locking system. Threaded Stem, Riveted, Stamping Fork—M8-P1.25.
Surface electroplating, Mounting Type - Threaded Stem.
Polypropylene core, High Quality Polyurethane Wheel Tread.
Translucent black finish. Bearings—Ball Bearings.

Wheel surface: high quality polyurethane
Wheel Center:Polypropylene

Drawings are for reference only and may differ from the product



Picture may differ from original product

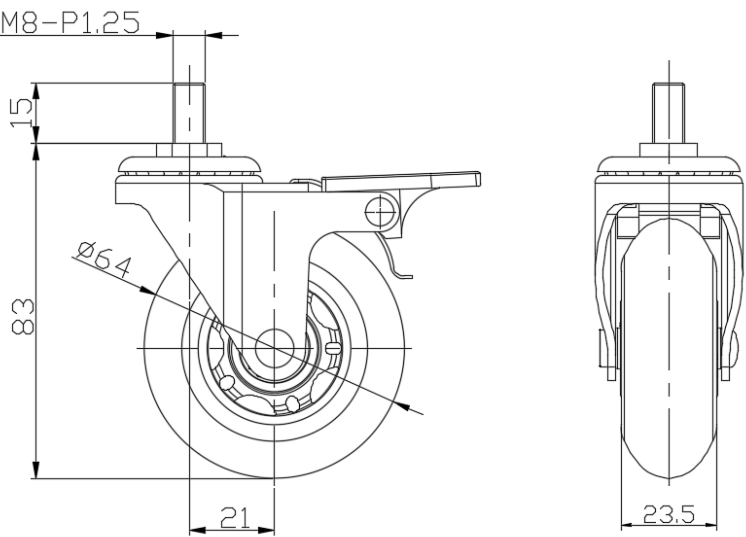
Technical Data

<input checked="" type="radio"/> Imperial <input type="radio"/> Metric	
Wheel Diameter	2-9/16
Wheel Width	15/16 "
Wheel Bearing	Wheels With Ball Bearings
Threaded Stem	M8-P1.25
Threaded Size	5/8 "
Offset	7/8 "
Swivel Interference	5-13/16 "
Overall Height	3-5/16 "
Swivel Radius	2-15/16 "
Hardness Of Tread	80±5° Shore A
Load Capacity (Dynamic)	88lbs
Load Capacity (Static)	132lbs
Temperature	-4°F to +158°F
Fork Type	Swivel Caster With Wheel Brake
Stainless	N/A
Electrical Conductivity	N/A
Anti-Static	N/A
Weight	0.5lbs
Standard	ISO22883

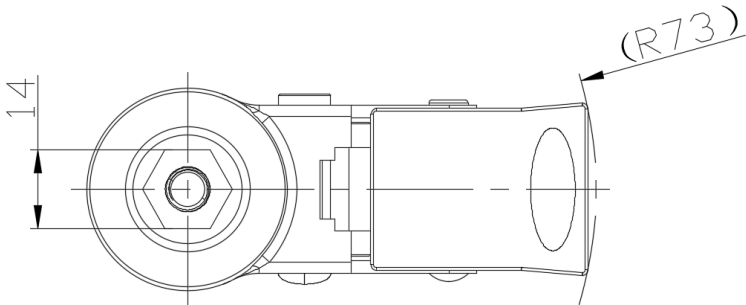
Advantages at a glance

Rolling Resistance	• • • • •
Operating Noise	• • • • •
Floor Surface Preservation	• • • • •

Dimensions



Mounting



* For any deviation between metric and imperial spec, please refer to the metric spec.