

1110-2 Light Duty Wire & Shelving/Display Series



PU (black transparent) Wheel Diameter × Wheel Width 64 × 23.5mm

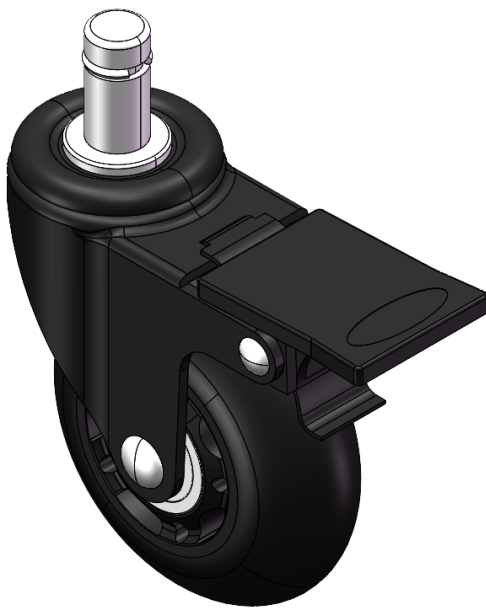
EAN

YJ-11100250958014

Caster with a single-brake With locking system. Stamping, Riveted Fork—Ø11x22L. Electroplated surface, snap-on Mounting Type system with brass buckle. Polypropylene core, High Quality Polyurethane Wheel Tread. Translucent black finish. Bearings—Ball Bearings.

Wheel surface: high quality polyurethane
Wheel Center:Polypropylene

Drawings are for reference only and may differ from the product



Picture may differ from original product

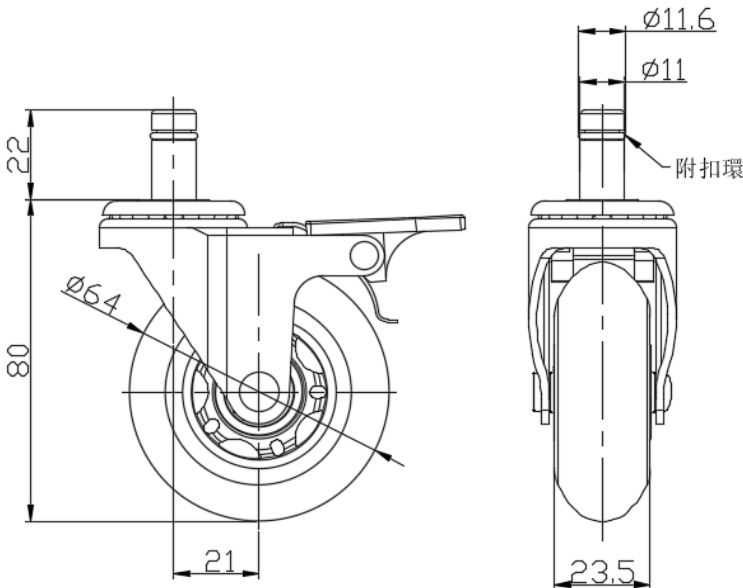
Technical Data

<input checked="" type="radio"/> Metric <input type="radio"/> Imperial	
Wheel Diameter	64mm
Wheel Width	23.5mm
Wheel Bearing	Wheels With Ball Bearings
Diameter	11mm
Stem Hole Spec	22mm
Offset	21mm
Swivel Interference	146mm
Overall Height	80mm
Swivel Radius	73mm
Hardness Of Tread	80±5° Shore A
Load Capacity (Dynamic)	40kgs
Load Capacity (Static)	60kgs
Temperature	-20°C to +70°C
Fork Type	Swivel Caster With Wheel Brake
Stainless	N/A
Electrical Conductivity	N/A
Anti-Static	N/A
Weight	0.22kgs
Standard	ISO22883

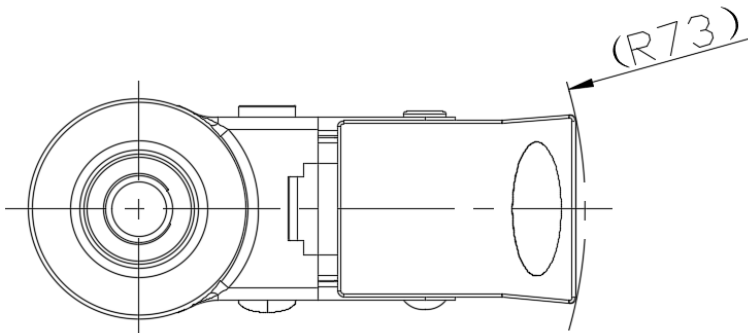
Advantages at a glance

Rolling Resistance	● ● ● ● ●
Operating Noise	● ● ● ● ●
Floor Surface Preservation	● ● ● ● ●

Dimensions



Mounting



* For any deviation between metric and imperial spec, please refer to the metric spec.