

1110-YOYO YOYO Series-Light Duty Twin Wheel Caster Series (All Plastic)

Yoyo Wheel (black dark gray) Wheel Diameter x Wheel Width 72.8 x 20mm

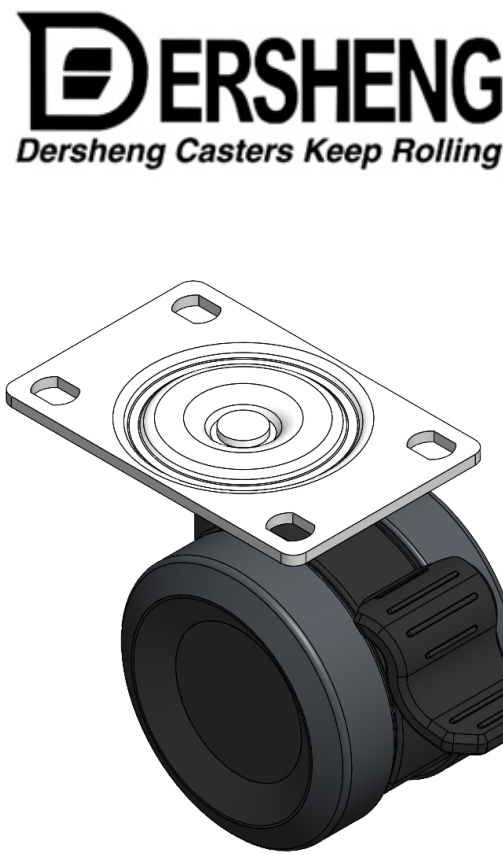
EAN

YJ-11100300244143

Single Brake locking system and a Fork-Riveted, injection-molded Fork. reinforced Polypropylene Fork with Fork-mount (3T) Mounting Type system Polypropylene (PP) Wheel Center, polyvinyl chloride (PVC) tread Dark gray, Anti-thread wheel cover.

Wheel Tread: PVC polyvinyl chloride  
Wheel Center: PP polypropylene

Drawings are for reference only and may differ from the product



Picture may differ from original product

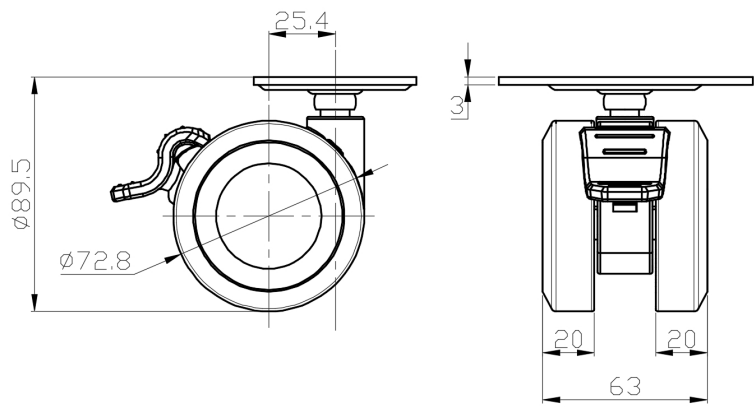
Technical Data

<input checked="" type="radio"/> Imperial <input type="radio"/> Metric	
Wheel Diameter	2-15/16
Wheel Width	2-1/2 "
Wheel Bearing	Wheel With Plain Bearing
Plate Size	3-3/4 " x 2-1/2 "
Bolt Hole Spacing	3 " x 1-13/16 "
Plate Hole	3/8 " x 3/8 "
Offset	1 "
Swivel Interference	6-13/16 "
Overall Height	3-9/16 "
Swivel Radius	3-7/16 "
Hardness Of Tread	95±5° Shore A
Load Capacity (Dynamic)	99lbs
Load Capacity (Static)	149lbs
Temperature	-4°F to +140°F
Fork Type	Swivel Caster With Wheel Brake
Stainless	N/A
Electrical Conductivity	N/A
Anti-Static	N/A
Weight	0.8lbs
Standard	ISO22883

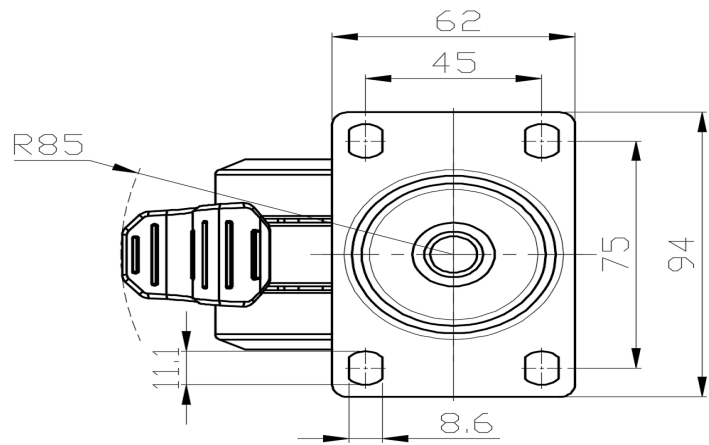
Advantages at a glance

Rolling Resistance	● ● ● ● ●
Operating Noise	● ● ● ● ●
Floor Surface Preservation	● ● ● ● ●

Dimensions



Mounting



\* For any deviation between metric and imperial spec, please refer to the metric spec.