

1110-YOYO YOYO Series-Light Duty Twin
Wheel Caster Series (All Plastic)



Yoyo Wheel (light dark gray) Wheel Diameter x Wheel Width 72.8 x 20mm

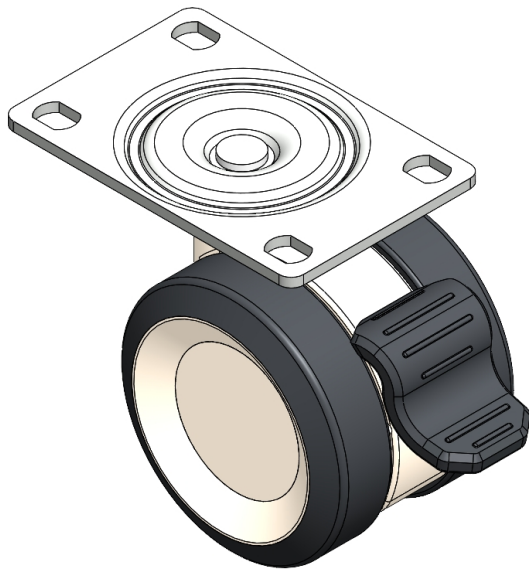
EAN

YJ-11100300244163

Single Brake locking system and a Fork-Riveted, injection-molded Fork. reinforced Polypropylene Fork with Fork-mount (3T) Mounting Type system Polypropylene (PP) Wheel Center, polyvinyl chloride (PVC) tread White-dark gray, wheel - Plain Bearing.

Wheel Tread: PVC polyvinyl chloride
Wheel Center: PP polypropylene

Drawings are for reference only and may differ from the product



Picture may differ from original product

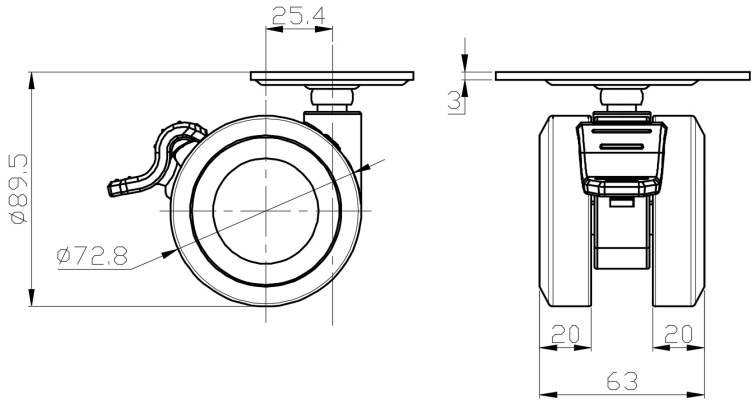
Technical Data

<input checked="" type="radio"/> Metric <input type="radio"/> Imperial	
Wheel Diameter	72.8mm
Wheel Width	63mm
Wheel Bearing	Wheel With Plain Bearing
Plate Size	94 x 62mm
Bolt Hole Spacing	75 x 45mm
Plate Hole	11.1 x 8.6mm
Offset	25.4mm
Swivel Interference	170mm
Overall Height	89.5mm
Swivel Radius	85mm
Hardness Of Tread	95±5° Shore A
Load Capacity (Dynamic)	45kgs
Load Capacity (Static)	67.5kgs
Temperature	-20°C to +60°C
Fork Type	Swivel Caster With Wheel Brake
Stainless	N/A
Electrical Conductivity	N/A
Anti-Static	N/A
Weight	0.36kgs
Standard	ISO22883

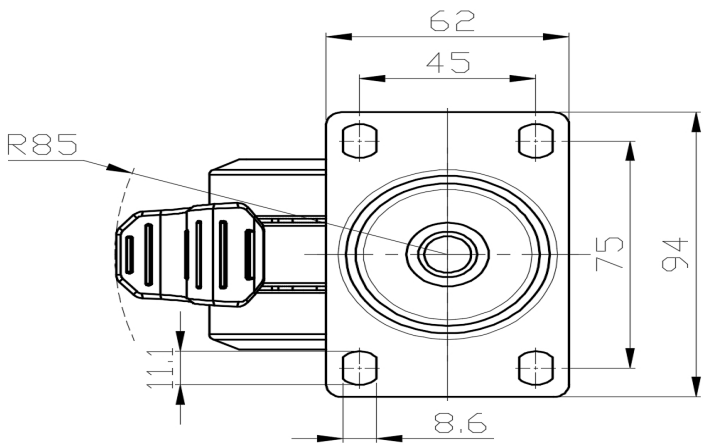
Advantages at a glance

Rolling Resistance	● ● ● ● ●
Operating Noise	● ● ● ● ●
Floor Surface Preservation	● ● ● ● ●

Dimensions



Mounting



* For any deviation between metric and imperial spec, please refer to the metric spec.