

1110-YOYO YOYO Series-Light Duty Twin Wheel Caster Series (All Plastic)



Yoyo Wheel (black dark gray) Wheel Diameter x Wheel Width 72.8 x 20mm

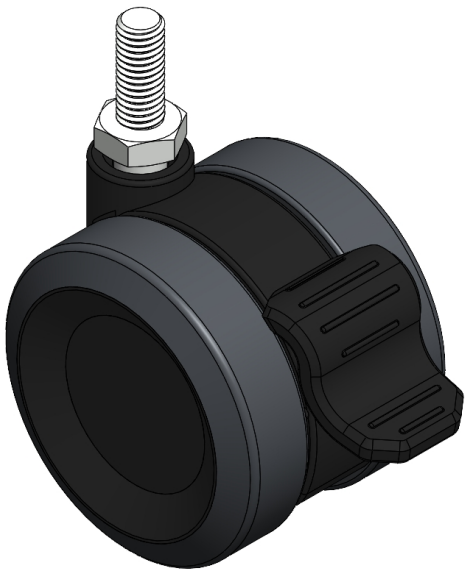
EAN

YJ-11100300246253

Caster with a single-brake With locking system, thread-Riveted, Injection Molding Fork (3/8"-16). reinforced Polypropylene Fork, Mounting Type - Threaded Stem. Polypropylene (PP) core, polyvinyl chloride (PVC) Wheel Tread. Dark gray, Plain Bearing.

Wheel surface: PVC polyvinyl chloride  
Wheel Center: PP polypropylene

Drawings are for reference only and may differ from the product



Picture may differ from original product

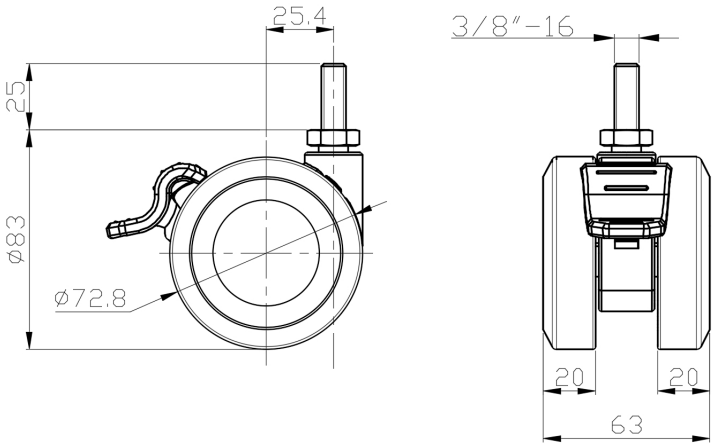
Technical Data

<input checked="" type="radio"/> Imperial <input type="radio"/> Metric	
Wheel Diameter	2-15/16
Wheel Width	2-1/2 "
Wheel Bearing	Wheel With Plain Bearing
Threaded Stem	3/8 " -16
Threaded Size	1 "
Offset	1 "
Swivel Interference	6-13/16 "
Overall Height	3-5/16 "
Swivel Radius	3-7/16 "
Hardness Of Tread	95±5° Shore A
Load Capacity (Dynamic)	99lbs
Load Capacity (Static)	149lbs
Temperature	-4°F to +140°F
Fork Type	Swivel Caster With Wheel Brake
Stainless	N/A
Electrical Conductivity	N/A
Anti-Static	N/A
Weight	0.6lbs
Standard	ISO22883

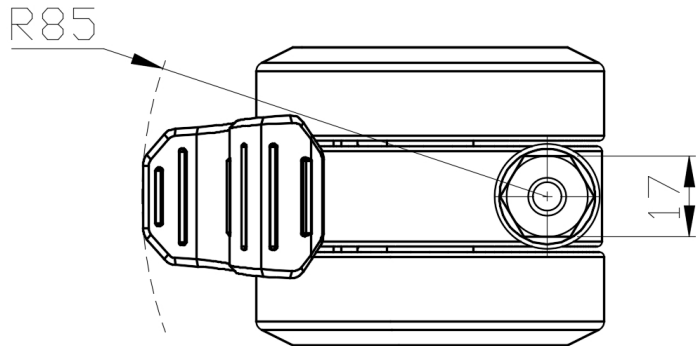
Advantages at a glance

Rolling Resistance	• • • • •
Operating Noise	• • • • •
Floor Surface Preservation	• • • • •

Dimensions



Mounting



\* For any deviation between metric and imperial spec, please refer to the metric spec.