

1110-YOYO YOYO Series-Light Duty Twin  
Wheel Caster Series (All Plastic)



Yoyo Wheel (black dark gray) Wheel Diameter x Wheel Width 72.8 x 20mm

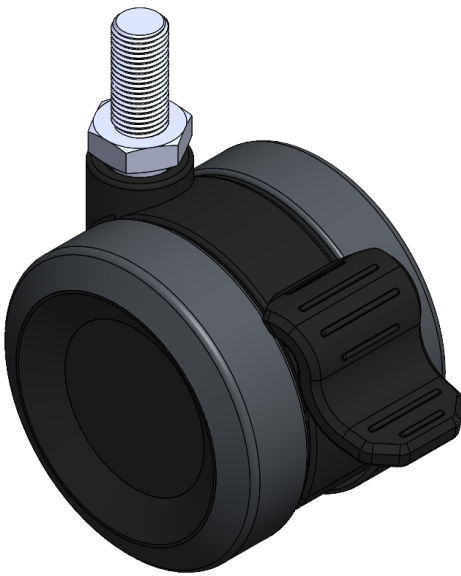
EAN

YJ-11100300246393

Single Brake locking system, thread-Riveted injection-molded Fork - M12-P1.75 reinforced Polypropylene Fork, Mounting Type - Threaded Stem Polypropylene (PP) Wheel Center, polyvinyl chloride (PVC) tread Dark gray, wheel - Plain Bearing.

Wheel Tread: PVC polyvinyl chloride  
Wheel Center: PP polypropylene

Drawings are for reference only and may differ from the product



Picture may differ from original product

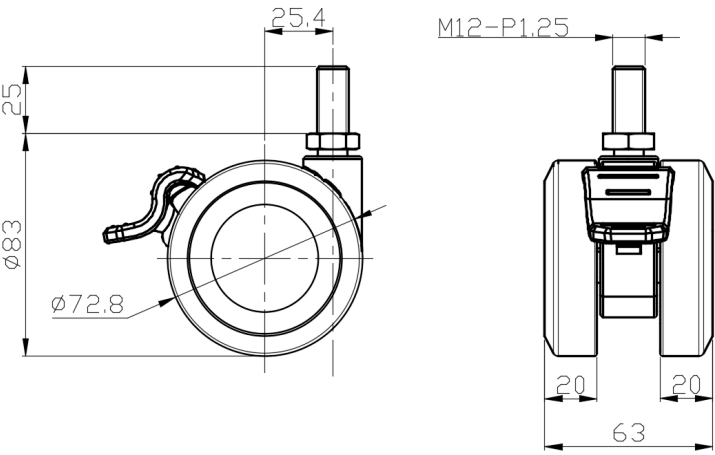
Technical Data

<input checked="" type="radio"/> Metric <input type="radio"/> Imperial	
Wheel Diameter	72.8mm
Wheel Width	63mm
Wheel Bearing	Wheel With Plain Bearing
Threaded Stem	M12-P1.75
Threaded Size	25mm
Offset	25.4mm
Swivel Interference	170mm
Overall Height	83mm
Swivel Radius	85mm
Hardness Of Tread	95±5° Shore A
Load Capacity (Dynamic)	45kgs
Load Capacity (Static)	67.5kgs
Temperature	-20°C to +60°C
Fork Type	Swivel Caster With Wheel Brake
Stainless	N/A
Electrical Conductivity	N/A
Anti-Static	N/A
Weight	0.26kgs
Standard	ISO22883

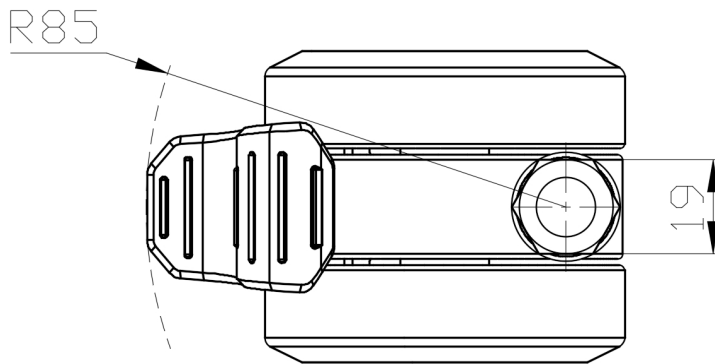
Advantages at a glance

Rolling Resistance	• • • • •
Operating Noise	• • • • •
Floor Surface Preservation	• • • • •

Dimensions



Mounting



\* For any deviation between metric and imperial spec, please refer to the metric spec.