

1110-YOYO YOYO Series-Light Duty Twin
Wheel Caster Series (All Plastic)



Yoyo Wheel (White dark gray) Wheel Diameter x Wheel Width 100 x 22mm

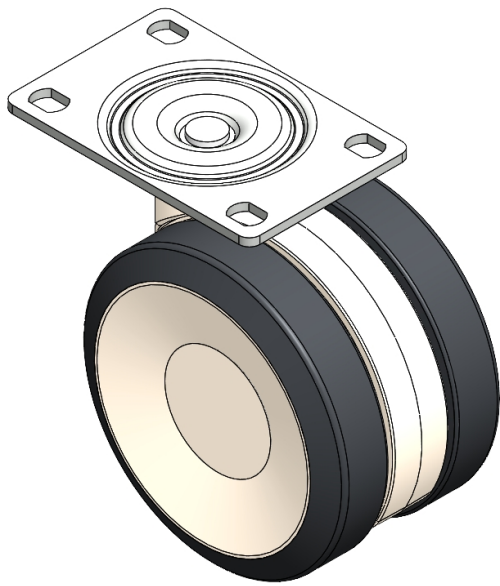
EAN

YJ-11100400242063

Swivel Caster with injection-molded Fork Riveted to Forkplate. reinforced Polypropylene Fork, Top Platetype (3T) Mounting Type system Polypropylene (PP) Wheel Center, polyvinyl chloride (PVC) tread White-dark gray, Bearing—Ball Bearing.

Wheel Tread: PVC polyvinyl chloride
Wheel Center: PP polypropylene

Drawings are for reference only and may differ from the product



Picture may differ from original product

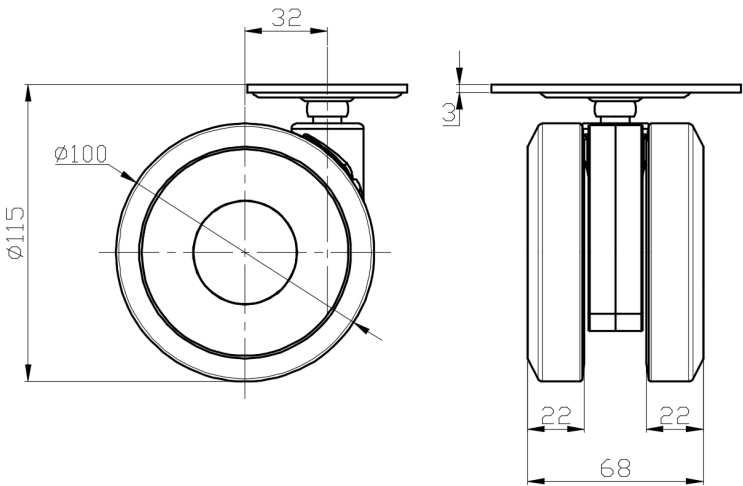
Technical Data

<input checked="" type="radio"/> Metric <input type="radio"/> Imperial	
Wheel Diameter	100mm
Wheel Width	68mm
Wheel Bearing	Wheels With Ball Bearings
Plate Size	94 x 62mm
Bolt Hole Spacing	75 x 45mm
Plate Hole	11.1 x 8.6mm
Offset	32mm
Swivel Interference	176mm
Overall Height	115mm
Swivel Radius	88mm
Hardness Of Tread	95±5° Shore A
Load Capacity (Dynamic)	100kgs
Load Capacity (Static)	150kgs
Temperature	-20°C to +60°C
Fork Type	Swivel Caster
Stainless	N/A
Electrical Conductivity	N/A
Anti-Static	N/A
Weight	0.59kgs
Standard	ISO22883

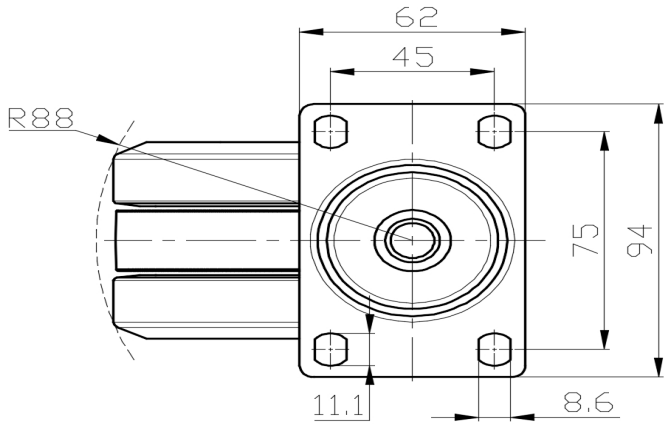
Advantages at a glance

Rolling Resistance	● ● ● ● ●
Operating Noise	● ● ● ● ●
Floor Surface Preservation	● ● ● ● ●

Dimensions



Mounting



* For any deviation between metric and imperial spec, please refer to the metric spec.