

1110-YOYO YOYO Series-Light Duty Twin
Wheel Caster Series (All Plastic)

Yoyo Wheel (black dark gray) Wheel Diameter x Wheel Width 100 x 22mm

EAN

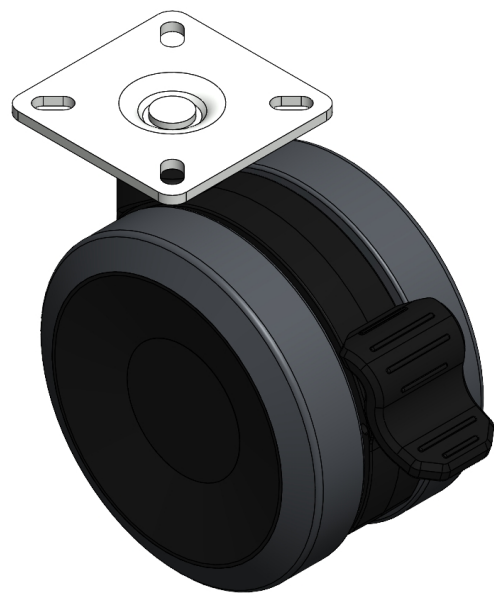
YJ-11100400244023

Castors with single brake Locking system, Fork Riveted injection moulded Fork. Frame made of reinforced High-quality Impact Resistance Polypropylene, Top Plate (3T) Mounting Type Wheel core made of High-quality Impact Resistance Polypropylene (PP), Wheel Tread made of polyvinyl chloride (PVC) Dark grey, Bearing – Ball Bearing.

Wheel Tread: PVC polyvinyl chloride

Wheel Center: PP polypropylene

Drawings are for reference only and may differ from the product



Picture may differ from original product

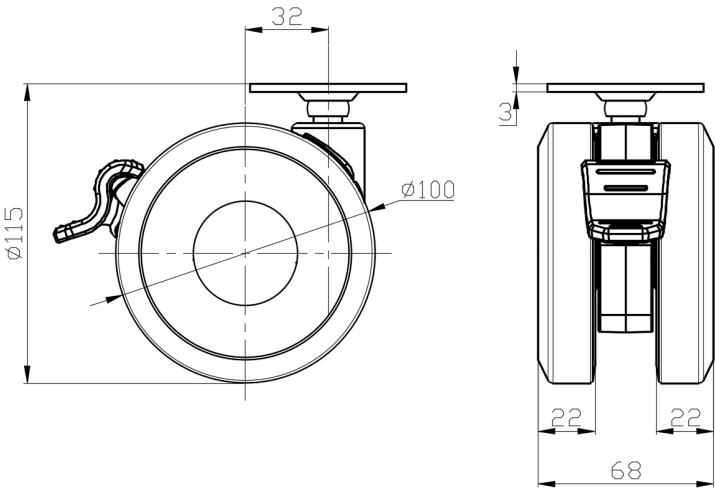
Technical Data

<input checked="" type="radio"/> Metric <input type="radio"/> Imperial	
Wheel Diameter	100mm
Wheel Width	68mm
Wheel Bearing	Wheels With Ball Bearings
Plate Size	60 x 60mm
Bolt Hole Spacing	42.5 x 42.5mm
Plate Hole	11 x 6mm
Offset	32mm
Swivel Interference	212mm
Overall Height	115mm
Swivel Radius	106mm
Hardness Of Tread	95±5° Shore A
Load Capacity (Dynamic)	100kgs
Load Capacity (Static)	150kgs
Temperature	-20°C to +60°C
Fork Type	Swivel Caster With Wheel Brake
Stainless	N/A
Electrical Conductivity	N/A
Anti-Static	N/A
Weight	0.57kgs
Standard	ISO22883

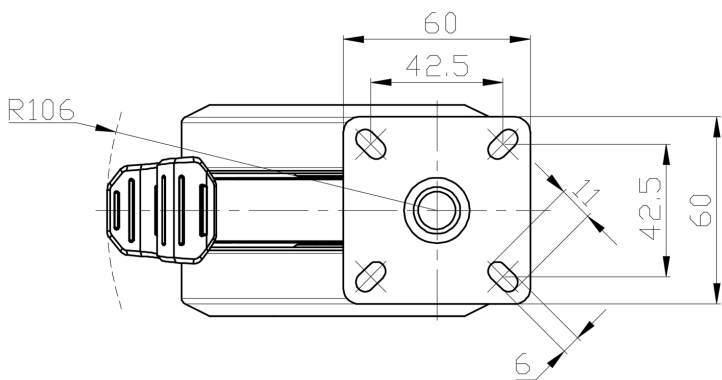
Advantages at a glance

Rolling Resistance	● ● ● ● ●
Operating Noise	● ● ● ● ●
Floor Surface Preservation	● ● ● ● ●

Dimensions



Mounting



* For any deviation between metric and imperial spec, please refer to the metric spec.