

1110-YOYO YOYO Series-Light Duty Twin Wheel Caster Series (All Plastic)

Yoyo Wheel (black dark gray) Wheel Diameter x Wheel Width 100 x 22mm

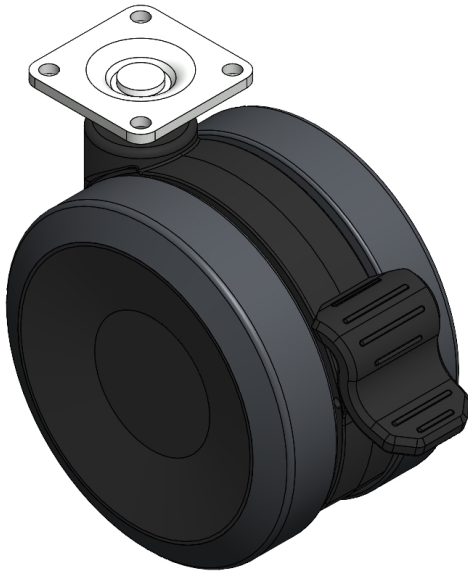
EAN

YJ-11100400244073

Single Brake locking system and a Fork-Riveted, injection-molded Fork. reinforced Polypropylene Fork with Fork-mount (3T) Mounting Type system Polypropylene (PP) Wheel Center, polyvinyl chloride (PVC) tread Dark gray color, Bearing—Ball Bearing.

Wheel Tread: PVC polyvinyl chloride  
Wheel Center: PP polypropylene

Drawings are for reference only and may differ from the product



Picture may differ from original product

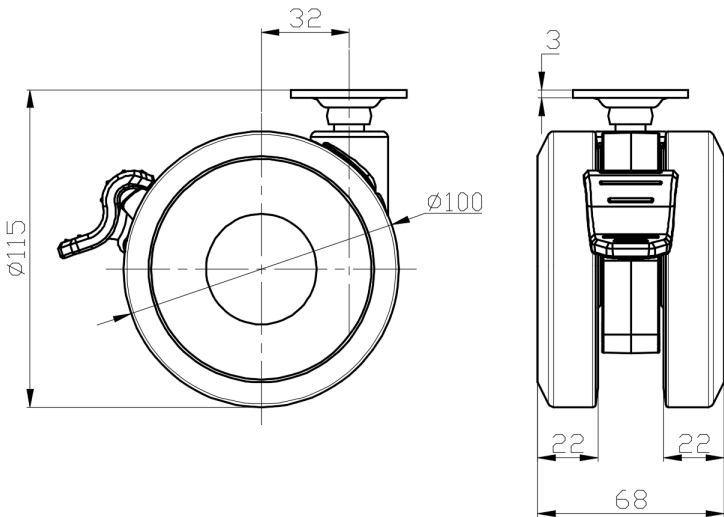
Technical Data

<input checked="" type="radio"/> Imperial <input type="radio"/> Metric	
Wheel Diameter	4 "
Wheel Width	2-3/4 "
Wheel Bearing	Wheels With Ball Bearings
Plate Size	1-11/16 " x 1-11/16 "
Bolt Hole Spacing	1-1/4"x1-1/4"
Plate Hole	1/4 "
Offset	1-5/16 "
Swivel Interference	8-1/2 "
Overall Height	4-9/16 "
Swivel Radius	4-1/4 "
Hardness Of Tread	95±5° Shore A
Load Capacity (Dynamic)	220lbs
Load Capacity (Static)	331lbs
Temperature	-4°F to +140°F
Fork Type	Swivel Caster With Wheel Brake
Stainless	N/A
Electrical Conductivity	N/A
Anti-Static	N/A
Weight	1.2lbs
Standard	ISO22883

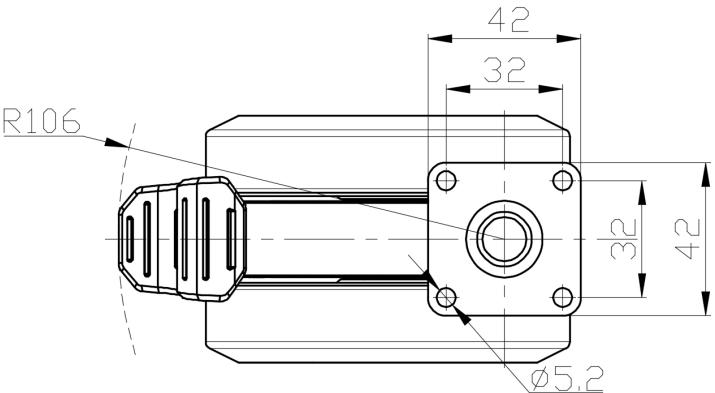
Advantages at a glance

Rolling Resistance	● ● ● ● ●
Operating Noise	● ● ● ● ●
Floor Surface Preservation	● ● ● ● ●

Dimensions



Mounting



\* For any deviation between metric and imperial spec, please refer to the metric spec.