

1110-YOYO YOYO Series-Light Duty Twin  
Wheel Caster Series (All Plastic)



Yoyo Wheel (White dark gray) Wheel Diameter x Wheel Width 100 x 22mm

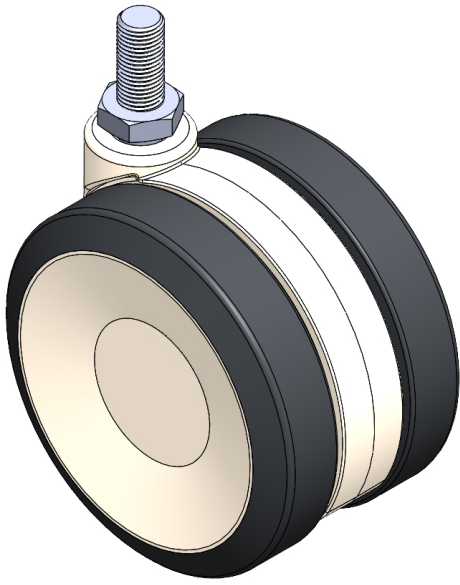
EAN

YJ-11100400245153

Swivel Caster, thread-Riveted injection-molded Fork—M12-P1.75 reinforced Polypropylene Fork, Mounting Type - Threaded Stem Polypropylene (PP) core, polyvinyl chloride (PVC) tread White-dark gray, Bearing—Ball Bearing.

Wheel Tread: PVC polyvinyl chloride  
Wheel Center: PP polypropylene

Drawings are for reference only and may differ from the product



Picture may differ from original product

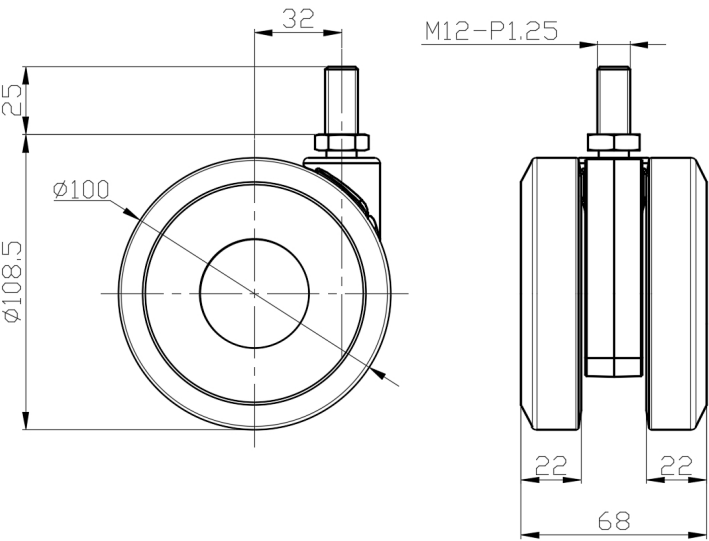
Technical Data

|  |                           |
|--|---------------------------|
| <input checked="" type="radio"/> Metric <input type="radio"/> Imperial |                           |
| Wheel Diameter   | 100mm                     |
| Wheel Width  | 68mm                      |
| Wheel Bearing  | Wheels With Ball Bearings |
| Threaded Stem  | M12-P1.75                 |
| Threaded Size  | 25mm                      |
| Offset   | 32mm                      |
| Swivel Interference  | 176mm                     |
| Overall Height   | 108.5mm                   |
| Swivel Radius  | 88mm                      |
| Hardness Of Tread  | 95±5° Shore A             |
| Load Capacity (Dynamic)  | 100kgs                    |
| Load Capacity (Static)   | 150kgs                    |
| Temperature  | -20°C to +60°C            |
| Fork Type  | Swivel Caster             |
| Stainless  | N/A                       |
| Electrical Conductivity  | N/A                       |
| Anti-Static  | N/A                       |
| Weight   | 0.50kgs                   |
| Standard   | ISO22883                  |

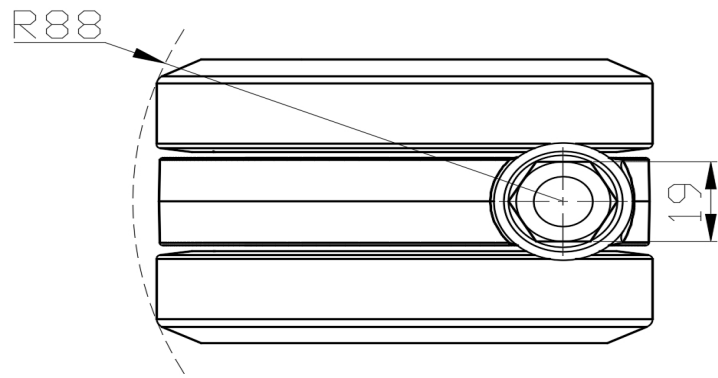
Advantages at a glance

|                            |           |
|----------------------------|-----------|
| Rolling Resistance         | ● ● ● ● ● |
| Operating Noise            | ● ● ● ● ● |
| Floor Surface Preservation | ● ● ● ● ● |

Dimensions



Mounting



\* For any deviation between metric and imperial spec, please refer to the metric spec.