

1110-YOYO YOYO Series-Light Duty Twin Wheel Caster Series (All Plastic)



Yoyo Wheel (black dark gray) Wheel Diameter x Wheel Width 100 x 22mm

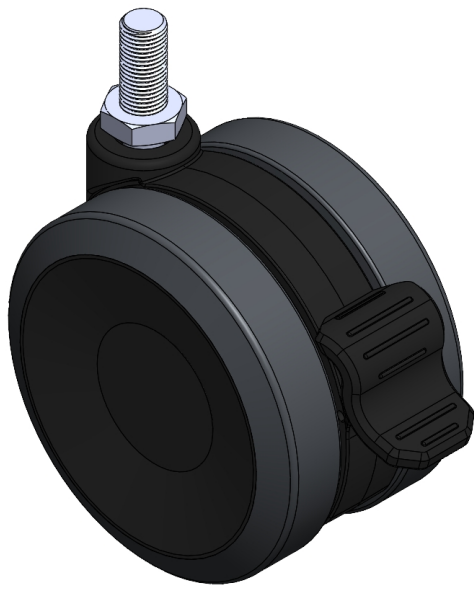
EAN

YJ-11100400246343

Single Brake locking system, thread-Riveted injection-molded Fork (M12-P1.75). reinforced Polypropylene Fork, Mounting Type - Threaded Stem. Polypropylene (PP) Wheel Center, polyvinyl chloride (PVC) tread. Dark gray color. Precision ball bearings.

Wheel Tread: PVC polyvinyl chloride
Wheel Center: PP polypropylene

Drawings are for reference only and may differ from the product



Picture may differ from original product

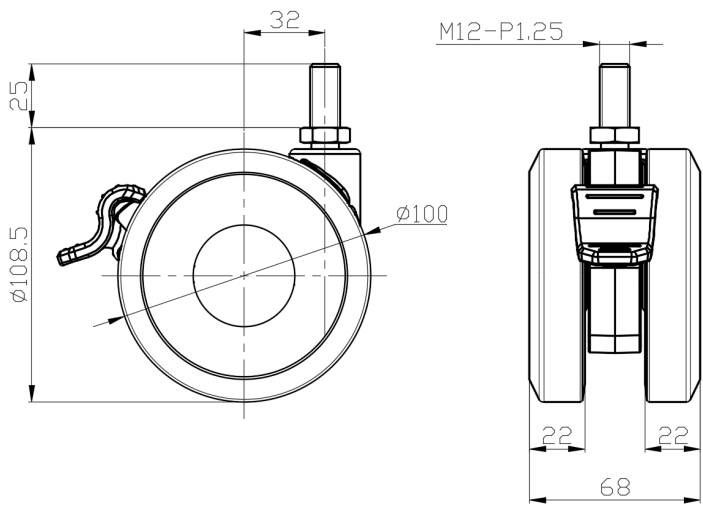
Technical Data

<input checked="" type="radio"/> Imperial <input type="radio"/> Metric	
Wheel Diameter	4 "
Wheel Width	2-3/4 "
Wheel Bearing	Wheels With Ball Bearings
Threaded Stem	M12-P1.75
Threaded Size	1 "
Offset	1-5/16 "
Swivel Interference	8-1/2 "
Overall Height	4-5/16 "
Swivel Radius	4-1/4 "
Hardness Of Tread	95±5° Shore A
Load Capacity (Dynamic)	220lbs
Load Capacity (Static)	331lbs
Temperature	-4°F to +140°F
Fork Type	Swivel Caster With Wheel Brake
Stainless	N/A
Electrical Conductivity	N/A
Anti-Static	N/A
Weight	1.1lbs
Standard	ISO22883

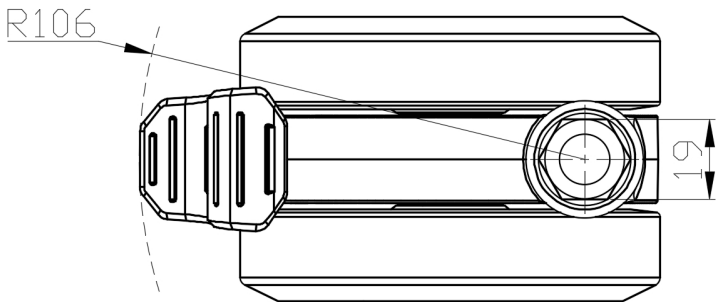
Advantages at a glance

Rolling Resistance	● ● ● ● ●
Operating Noise	● ● ● ● ●
Floor Surface Preservation	● ● ● ● ●

Dimensions



Mounting



* For any deviation between metric and imperial spec, please refer to the metric spec.