

1110-YOYO YOYO Series-Light Duty Twin
Wheel Caster Series (All Plastic)



Yoyo Wheel (White dark gray) Wheel Diameter x Wheel Width 100 x 22mm

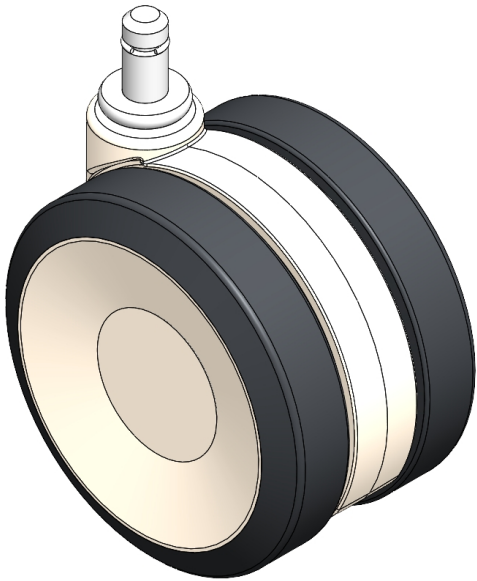
EAN

YJ-11100400247023

Swivel Caster, rivet-and-stamp Fork—Ø 11 x 22L reinforced Polypropylene Fork, Swivel Mounting Type mechanism Polypropylene (PP) core, polyvinyl chloride (PVC) tread White-dark gray, Bearing—Ball Bearing.

Wheel Tread: PVC polyvinyl chloride
Wheel Center: PP polypropylene

Drawings are for reference only and may differ from the product



Picture may differ from original product

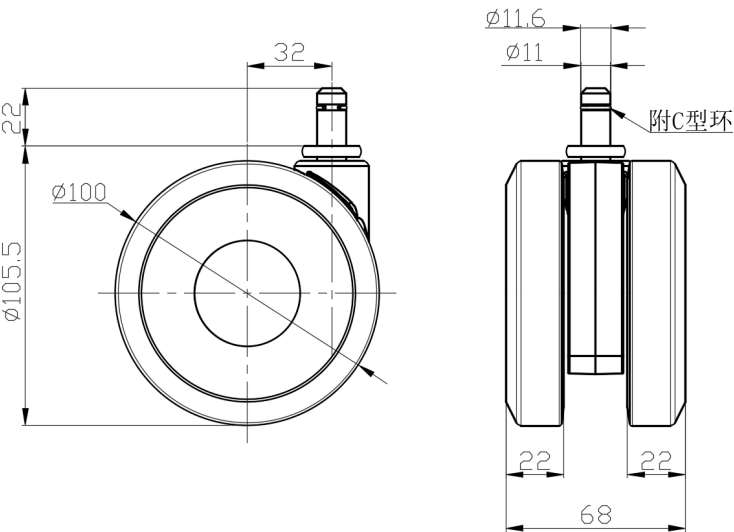
Technical Data

| | |
|--|---------------------------|
| <input checked="" type="radio"/> Metric <input type="radio"/> Imperial | |
| Wheel Diameter | 100mm |
| Wheel Width | 68mm |
| Wheel Bearing | Wheels With Ball Bearings |
| Diameter | 11mm |
| Stem Hole Spec | 22mm |
| Offset | 32mm |
| Swivel Interference | 176mm |
| Overall Height | 105.5mm |
| Swivel Radius | 88mm |
| Hardness Of Tread | 95±5° Shore A |
| Load Capacity (Dynamic) | 100kgs |
| Load Capacity (Static) | 150kgs |
| Temperature | -20°C to +60°C |
| Fork Type | Swivel Caster |
| Stainless | N/A |
| Electrical Conductivity | N/A |
| Anti-Static | N/A |
| Weight | 0.49kgs |
| Standard | ISO22883 |

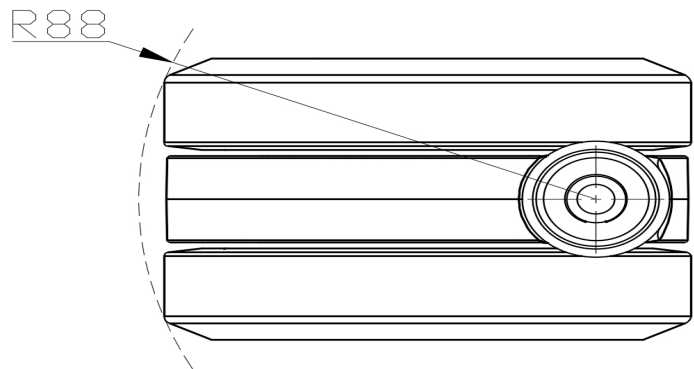
Advantages at a glance

| | |
|----------------------------|-----------|
| Rolling Resistance | • • • • • |
| Operating Noise | • • • • • |
| Floor Surface Preservation | • • • • • |

Dimensions



Mounting



* For any deviation between metric and imperial spec, please refer to the metric spec.