

1110-YOYO YOYO Series-Light Duty Twin
Wheel Caster Series (All Plastic)

Yoyo Wheel (White dark gray) Wheel Diameter x Wheel Width 100 x 22mm

EAN

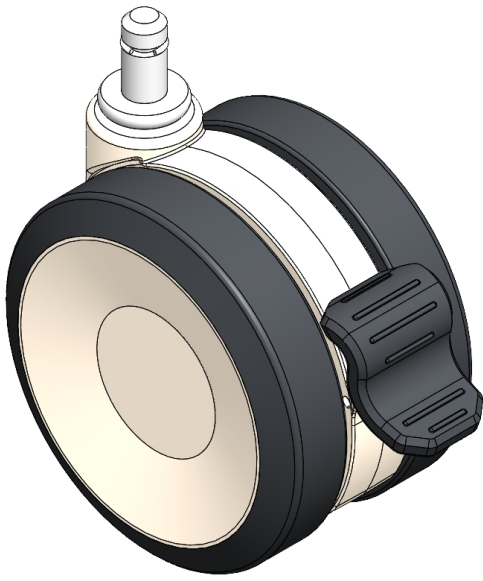
YJ-11100400248033

Caster with single-brake Locking system, rivet-and-stamp Fork—Ø 11 x 22L reinforced Polypropylene Fork, rivet-and-stamp Mounting Type system Polypropylene (PP) core, polyvinyl chloride (PVC) tread White-dark gray, Bearing—Ball Bearing.

Wheel Tread: PVC polyvinyl chloride

Wheel Center: PP polypropylene

Drawings are for reference only and may differ from the product



Picture may differ from original product

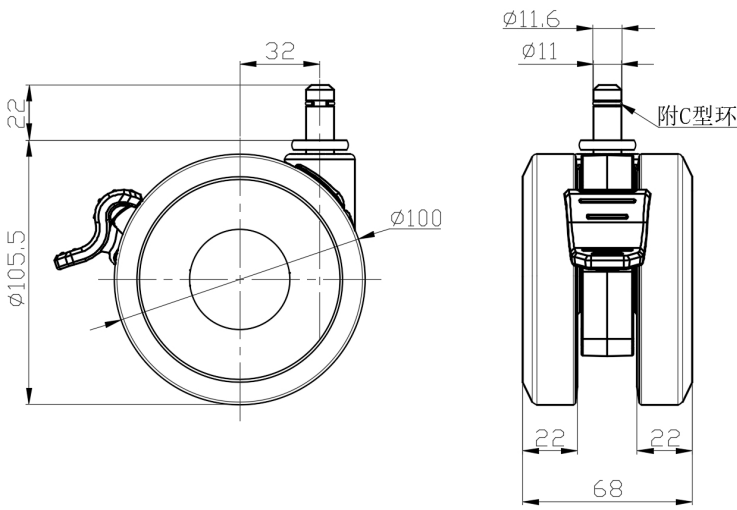
Technical Data

<input checked="" type="radio"/> Metric <input type="radio"/> Imperial	
Wheel Diameter	100mm
Wheel Width	68mm
Wheel Bearing	Wheels With Ball Bearings
Diameter	11mm
Stem Hole Spec	22mm
Offset	32mm
Swivel Interference	212mm
Overall Height	105.5mm
Swivel Radius	106mm
Hardness Of Tread	95±5° Shore A
Load Capacity (Dynamic)	100kgs
Load Capacity (Static)	150kgs
Temperature	-20°C to +60°C
Fork Type	Swivel Caster With Wheel Brake
Stainless	N/A
Electrical Conductivity	N/A
Anti-Static	N/A
Weight	0.51kgs
Standard	ISO22883

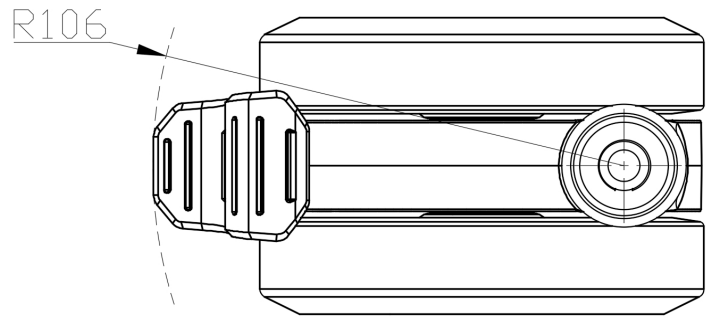
Advantages at a glance

Rolling Resistance	• • • • •
Operating Noise	• • • • •
Floor Surface Preservation	• • • • •

Dimensions



Mounting



* For any deviation between metric and imperial spec, please refer to the metric spec.