



1111 Institutional Caster Series

W Resolute(Pearlescent dark gray) Wheel Diameter × Wheel Width 100 x 31mm

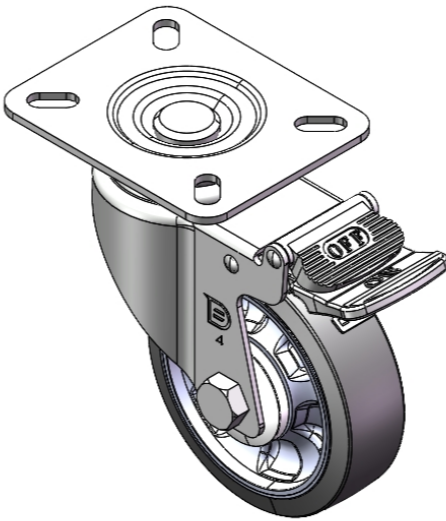
EAN

YJ-11110400454023

Castors with Total Brake Locking system. Top Plate Riveted Stamping Fork - European standard oblique holes Surface Zine-Plated, Mounting Type - Top Plate Reinforced impact-resistant High-quality Impact Resistance Polypropylene Wheel Center,High-Quality Thermoplastic Rubber (TPR) Wheel Tread Pearl dark gray, Bearing - Ball Bearing.

Wheel tread: Thermoplastic rubber elastomer (TPR)
Wheel Center: Made of high-quality impact-resistant polypropylene

Drawings are for reference only and may differ from the product



Picture may differ from original product

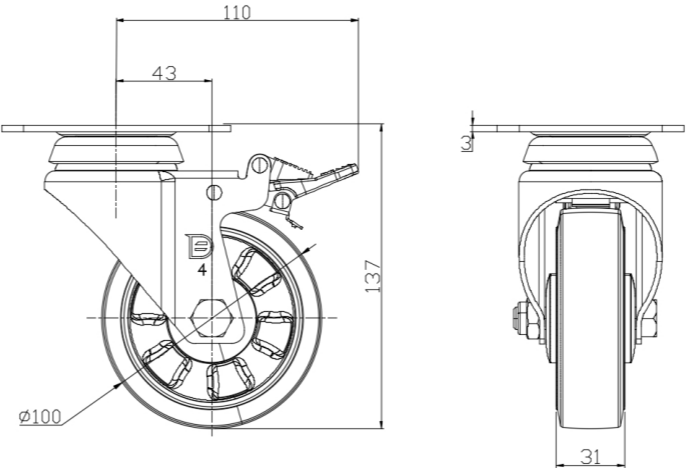
Technical Data

<input checked="" type="radio"/> Metric <input type="radio"/> Imperial	
Wheel Diameter	100mm
Wheel Width	31mm
Wheel Bearing	Wheels With Ball Bearings
Plate Size	104 x 85mm
Bolt Hole Spacing	80 x 60mm
Plate Hole	18 x 8.8mm
Offset	43mm
Swivel Interference	220mm
Overall Height	137mm
Swivel Radius	110mm
Hardness Of Tread	72±5° Shore A
Load Capacity (Dynamic)	135kgs
Load Capacity (Static)	202.5kgs
Temperature	-20°C to +60°C
Fork Type	Swivel Caster With Total Brake
Stainless	N/A
Electrical Conductivity	N/A
Anti-Static	N/A
Weight	0.94kgs
Standard	ISO22883

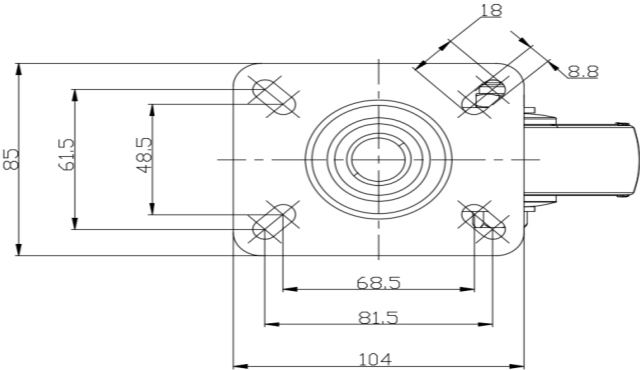
Advantages at a glance

Rolling Resistance	● ● ● ● ●
Operating Noise	● ● ● ● ●
Floor Surface Preservation	● ● ● ● ●

Dimensions



Mounting



* For any deviation between metric and imperial spec, please refer to the metric spec.