



1111 Institutional Caster Series

PPU (Grey) Wheel Diameter × Wheel Width 125 x 31mm

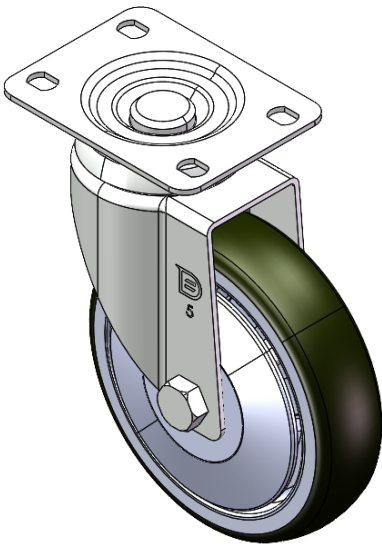
EAN

YJ-11110500312013

Swivel castor, Top Plate Riveted Stamping Fork - 75 x 45 mm (3" x 1-3/4") Bolt Hole Spacing Surface Zine-Plated, Top Plate Mounting Type High-quality Impact Resistance Polypropylene Wheel Center, High Quality Polyurethane Wheel Tread Gray, Bearing - Ball Bearing.

Wheel tread: High quality polyurethane wheel tread  
Wheel Center: PP polypropylene

Drawings are for reference only and may differ from the product



Picture may differ from original product

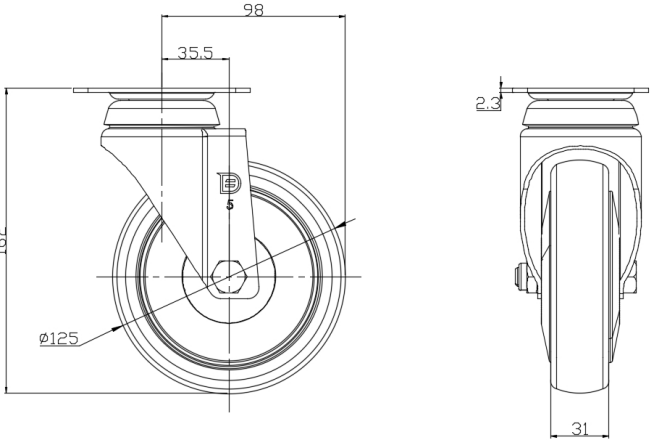
Technical Data

<input checked="" type="radio"/> Metric <input type="radio"/> Imperial	
Wheel Diameter	125mm
Wheel Width	31mm
Wheel Bearing	Wheels With Ball Bearings
Plate Size	95 x 72.5mm
Bolt Hole Spacing	75 x45mm
Plate Hole	11.3 x 8.8mm
Offset	35.5mm
Swivel Interference	196mm
Overall Height	162mm
Swivel Radius	98mm
Hardness Of Tread	72±5° Shore A
Load Capacity (Dynamic)	130kgs
Load Capacity (Static)	195kgs
Temperature	-20°C to +60°C
Fork Type	Swivel Caster
Stainless	N/A
Electrical Conductivity	N/A
Anti-Static	N/A
Weight	0.98kgs
Standard	ISO22883

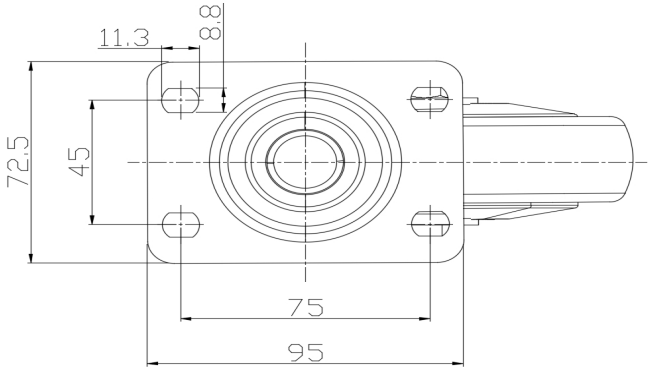
Advantages at a glance

Rolling Resistance	● ● ● ● ●
Operating Noise	● ● ● ● ●
Floor Surface Preservation	● ● ● ● ●

Dimensions



Mounting



\* For any deviation between metric and imperial spec, please refer to the metric spec.