

1117 Blue Fork Pneumatic Caster Series



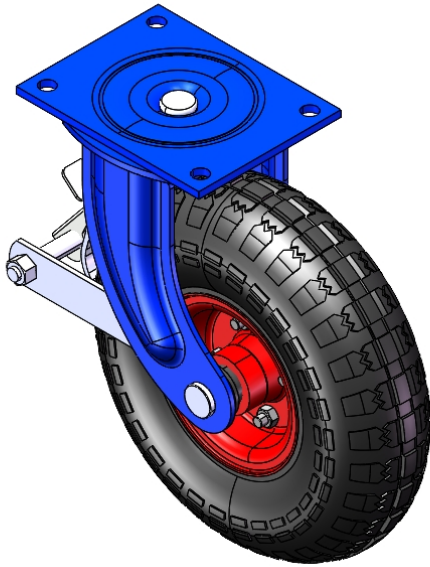
Wind wheel inflatable wheel(Black)wheel diameter × wheel width 273 x 87mm

YJ-11171000014031

Casters with a center brake and With locking system. Top Plate Riveted and Stamping. Blue-painted finish, Top Plate (6T) Mounting Type system. Cast Iron wheel center, High-Quality Resilient Rubber Wheel Tread, Wheel Tread is both pressure-resistant and wear-resistant. Black, Bearing—Ball Bearings.

Wheel surface: high-quality elastic rubber
Wheel Center: iron core

Drawings are for reference only and may differ from the product



Picture may differ from original product

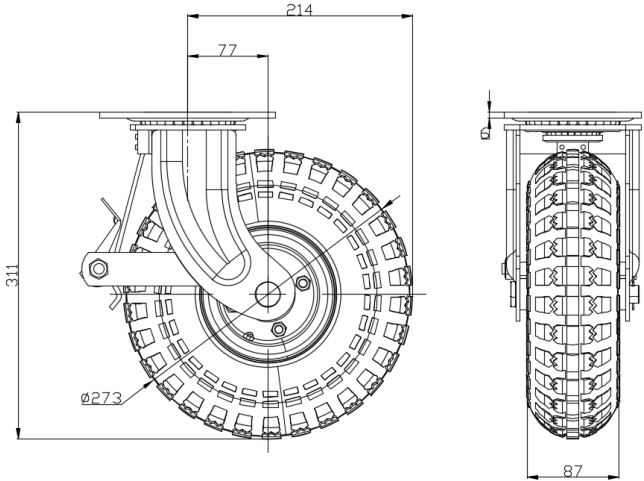
Technical Data

<input checked="" type="radio"/> Metric <input type="radio"/> Imperial	
Wheel Diameter	273mm
Wheel Width	87mm
Wheel Bearing	Wheels With Ball Bearings
Plate Size	167 x 130mm
Bolt Hole Spacing	140 x 100mm
Plate Hole	13mm
Offset	77mm
Swivel Interference	428mm
Overall Height	311mm
Swivel Radius	214mm
Hardness Of Tread	75±5° Shore A
Load Capacity (Dynamic)	200kgs
Load Capacity (Static)	350kgs
Temperature	-20°C to +70°C
Fork Type	Swivel Caster With Rear Brake
Stainless	N/A
Electrical Conductivity	N/A
Anti-Static	N/A
Weight	5.52kgs
Standard	ISO22883

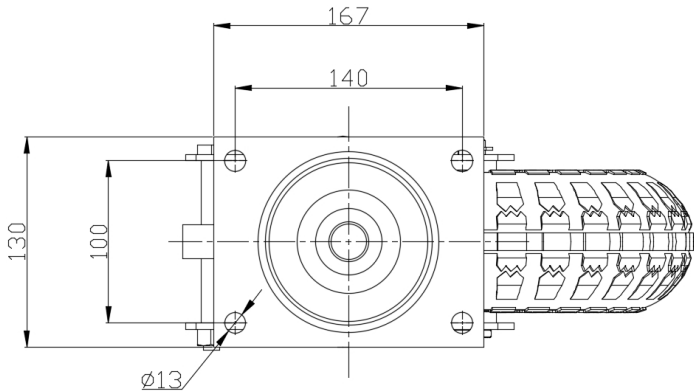
Advantages at a glance

Rolling Resistance	● ● ● ● ○
Operating Noise	● ● ● ● ●
Floor Surface Preservation	● ● ● ● ●

Dimensions



Mounting



Drawings are for reference only and may differ from the product.

* For any deviation between metric and imperial spec, please refer to the metric spec.