

1117 Blue Fork Pneumatic Caster Series



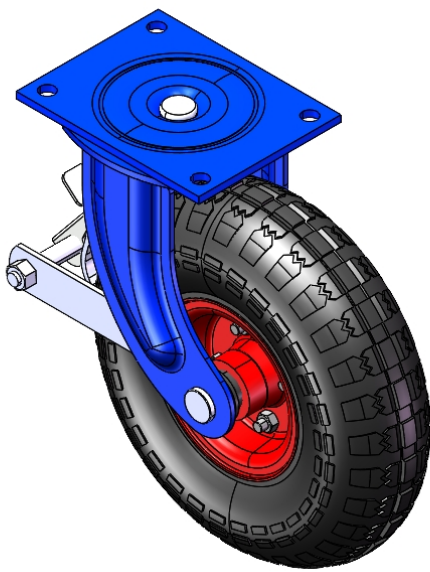
Wind wheel inflatable wheel(Black)wheel diameter × wheel width 273 x 87mm

YJ-11171000014031

Casters with a center brake and With locking system. Top Plate Riveted and Stamping. Blue-painted finish, Top Plate (6T) Mounting Type system. Cast Iron wheel center, High-Quality Resilient Rubber Wheel Tread, Wheel Tread is both pressure-resistant and wear-resistant. Black, Bearing—Ball Bearings.

Wheel surface: high-quality elastic rubber
Wheel Center: iron core

Drawings are for reference only and may differ from the product



Picture may differ from original product

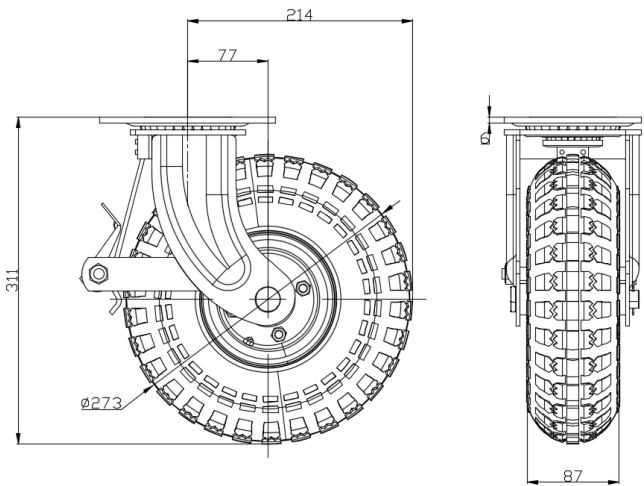
Technical Data

<input checked="" type="radio"/> Imperial <input type="radio"/> Metric	
Wheel Diameter	273mm
Wheel Width	3-1/2 "
Wheel Bearing	Wheels With Ball Bearings
Plate Size	5-3/4 " x 4-3/16 "
Bolt Hole Spacing	
Plate Hole	9/16 "
Offset	3-1/16 "
Swivel Interference	<div style=
Overall Height	12-7/16 "
Swivel Radius	8-1/2 "
Hardness Of Tread	75±5° Shore A
Load Capacity (Dynamic)	441lbs
Load Capacity (Static)	772lbs
Temperature	-4°F to +158°F
Fork Type	Swivel Caster With Rear Brake
Stainless	N/A
Electrical Conductivity	N/A
Anti-Static	N/A
Weight	12.2lbs
Standard	ISO22883

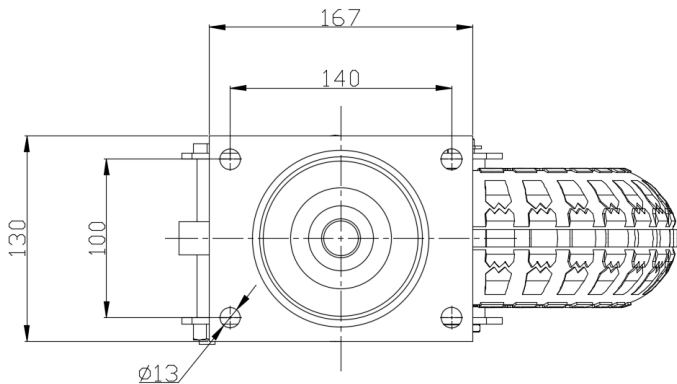
Advantages at a glance

Rolling Resistance	● ● ● ● ○
Operating Noise	● ● ● ● ●
Floor Surface Preservation	● ● ● ● ●

Dimensions



Mounting



* For any deviation between metric and imperial spec, please refer to the metric spec.