

1117 Blue Fork Pneumatic Caster Series



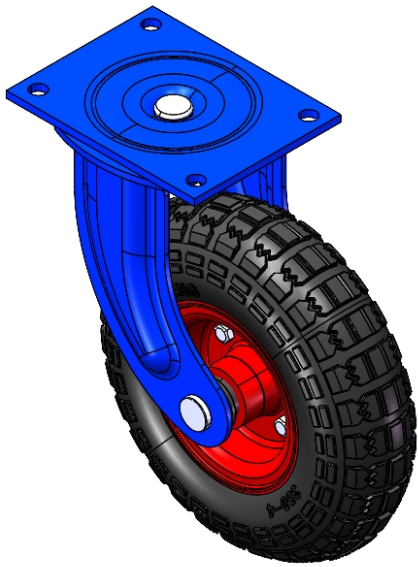
Solid Rubber (Black) Wheel Diameter × Wheel Width 250 x 74mm

YJ-11171000022041

Swivel Caster with Riveted Fork and Stamping Fork.  
Blue-painted finish, Top Plate-mounted (6T) Mounting Type system.  
Cast Iron wheel center, High-Quality Resilient Rubber Wheel Tread; Wheel Tread provides  
Compression Resistance and wear resistance.  
Black, Bearing—Ball Bearings.

Wheel surface: high-quality elastic rubber  
Wheel Center: iron core

Drawings are for reference only and may differ from the product



Picture may differ from original product

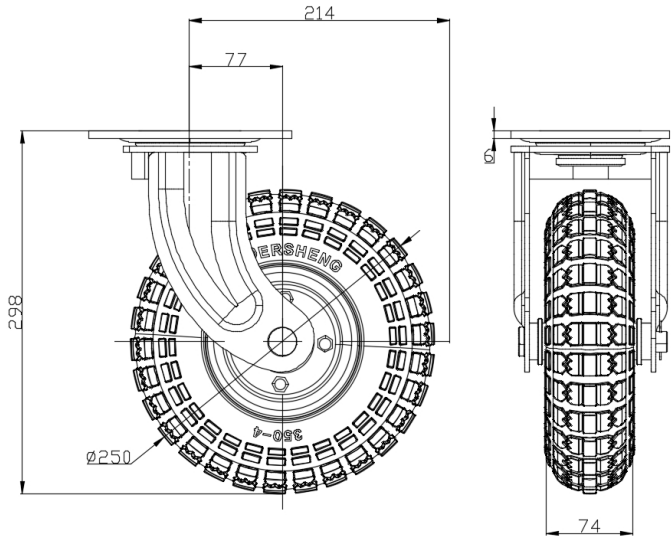
Technical Data

<input checked="" type="radio"/> Imperial <input type="radio"/> Metric	
Wheel Diameter	250mm
Wheel Width	74mm
Wheel Bearing	Wheels With Ball Bearings
Plate Size	167 x 130mm
Bolt Hole Spacing	140 x 100mm
Plate Hole	13mm
Offset	77mm
Swivel Interference	428mm
Overall Height	298mm
Swivel Radius	214mm
Hardness Of Tread	75±5° Shore A
Load Capacity (Dynamic)	180kgs
Load Capacity (Static)	270kgs
Temperature	-20°C to +70°C
Fork Type	Swivel Caster
Stainless	N/A
Electrical Conductivity	N/A
Anti-Static	N/A
Weight	7.48kgs
Standard	ISO22883

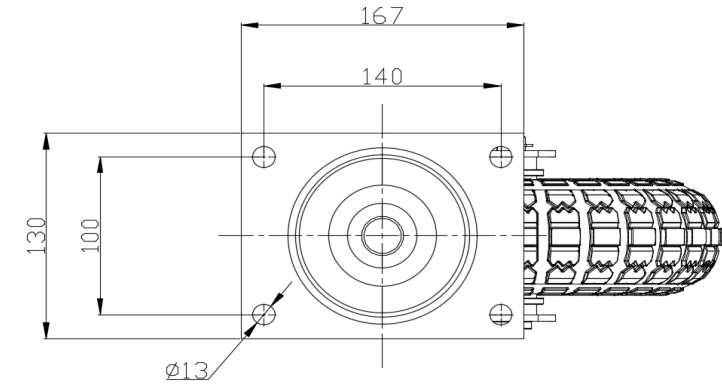
Advantages at a glance

Rolling Resistance	● ● ● ● ○
Operating Noise	● ● ● ● ●
Floor Surface Preservation	● ● ● ● ●

Dimensions



Mounting



\* For any deviation between metric and imperial spec, please refer to the metric spec.