



1120 Single Raceway, Light Duty Caster Series

Rubber Wheel (Diameter × Width 40×17mm)

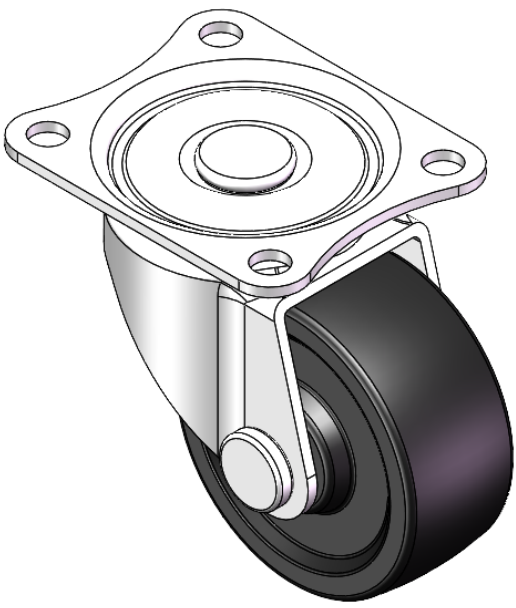
A

YJ-11200150062013

Swivel Casters, Riveted and Stamping Top Plate—36 x 28mm Bolt Hole Spacing
Zine-Plated surface, Mounting Type - Top Plate device
Reinforced Polypropylene, High-Quality Resilient Rubber Wheel Tread
Transparent, Bearing—Ball Bearings.

Wheel surface: High-quality elastic rubber
Wheel Center: Thermoplastic (PA6)

Drawings are for reference only and may differ from the product



Picture may differ from original product

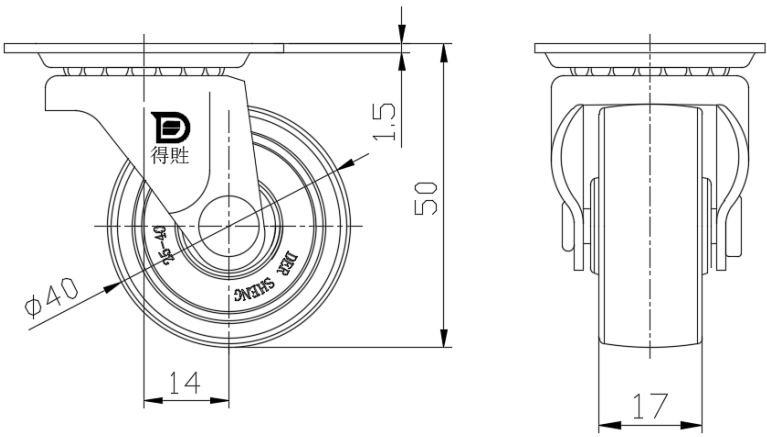
Technical Data

<input checked="" type="radio"/> Imperial <input type="radio"/> Metric	
Wheel Diameter	1-5/8
Wheel Width	11/16 "
Wheel Bearing	Wheel With Plain Bearing
Plate Size	1-7/8 " x 1-1/2 "
Bolt Hole Spacing	1-7/16 " x 1-1/8 "
Plate Hole	1/4 "
Offset	9/16 "
Swivel Interference	2-11/16 "
Overall Height	1-15/16 "
Swivel Radius	1-3/8 "
Hardness Of Tread	80±5° Shore A
Load Capacity (Dynamic)	44lbs
Load Capacity (Static)	66lbs
Temperature	-4°F to +248°F
Fork Type	Swivel Caster
Stainless	N/A
Electrical Conductivity	N/A
Anti-Static	N/A
Weight	0.2lbs
Standard	ISO22883

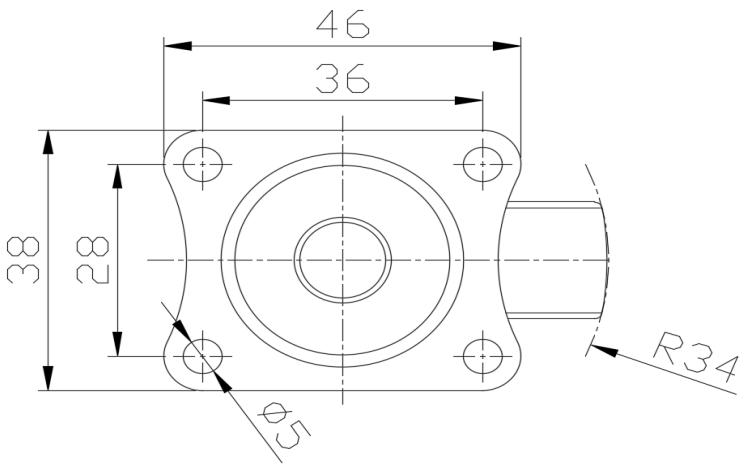
Advantages at a glance

Rolling Resistance	● ● ● ○ ○
Operating Noise	● ● ● ● ○
Floor Surface Preservation	● ● ● ● ○

Dimensions



Mounting



* For any deviation between metric and imperial spec, please refer to the metric spec.