



1120 Single Raceway, Light Duty Caster Series

Bánh MRC (màu trong suốt) Kích thước: Đường kính × Độ rộng 38×16.5mm

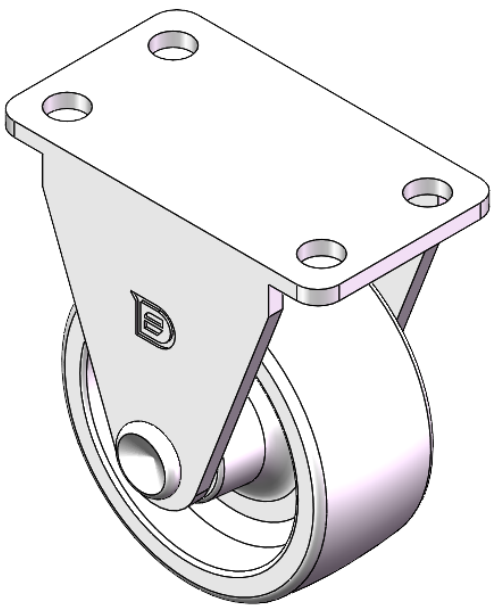
EAN

YJ-11200150071013

Rigid Casters, Stamping Fabricated Caster Fork, 36 x 15mm Bolt Hole Spacing Zine-Plated surface, Mounting Type - Top Plate device Reinforced Polypropylene and Wheel Tread Transparent, Bearing—Ball Bearings.

Wheel surface: Thermoplastic (PA6)
Wheel Center: Thermoplastic (PA6)

Drawings are for reference only and may differ from the product



Picture may differ from original product

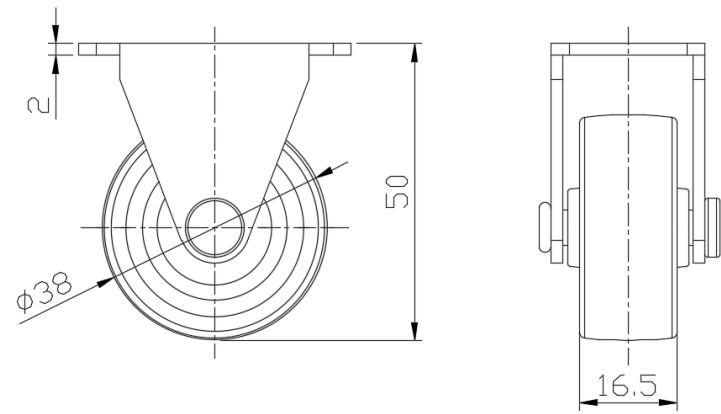
Technical Data

<input checked="" type="radio"/> Imperial <input type="radio"/> Metric	
Wheel Diameter	1-1/2
Wheel Width	11/16 "
Wheel Bearing	Wheels With Ball Bearings
Plate Size	1-7/8 " x 1-1/16 "
Bolt Hole Spacing	1-7/16 " x 5/8 "
Plate Hole	1/4 "
Overall Height	2 "
Hardness Of Tread	75±5° Shore D
Load Capacity (Dynamic)	44lbs
Load Capacity (Static)	66lbs
Temperature	-4°F to +176°F
Fork Type	Rigid Caster
Stainless	N/A
Electrical Conductivity	N/A
Anti-Static	N/A
Weight	0.1lbs
Standard	ISO22883

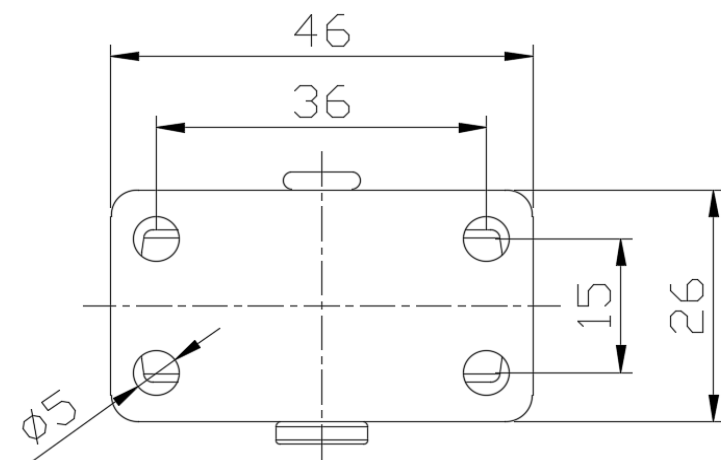
Advantages at a glance

Rolling Resistance	● ● ● ● ●
Operating Noise	● ● ○ ○ ○
Floor Surface Preservation	● ● ○ ○ ○

Dimensions



Mounting



* For any deviation between metric and imperial spec, please refer to the metric spec.