



1120 Single Raceway, Light Duty Caster Series

Bánh MRC (màu trong suốt) Kích thước: Đường kính × Độ rộng 38×16.5mm

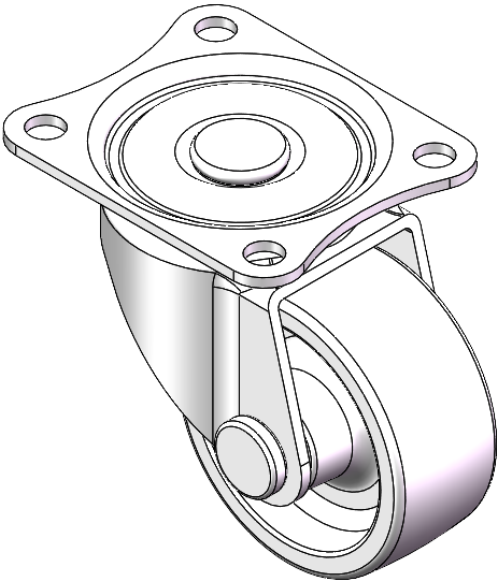
EAN

YJ-11200150072013

Swivel Casters, Riveted and Stamping Top Plate brackets—Bolt Hole Spacing 36 x 15  
Zine-Plated surface, Mounting Type - Top Plate device  
Reinforced Polypropylene and Wheel Tread  
Transparent, Bearing—Ball Bearings.

Wheel surface: Thermoplastic (PA6)  
Wheel Center: Thermoplastic (PA6)

Drawings are for reference only and may differ from the product



Picture may differ from original product

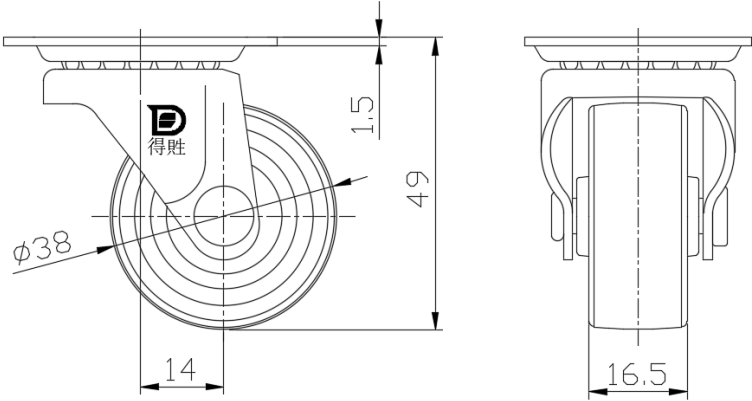
Technical Data

<input checked="" type="radio"/> Metric <input type="radio"/> Imperial	
Wheel Diameter	38mm
Wheel Width	16.5mm
Wheel Bearing	Wheels With Ball Bearings
Plate Size	46 x 38mm
Bolt Hole Spacing	36 x 28mm
Plate Hole	5mm
Offset	14mm
Swivel Interference	67mm
Overall Height	49mm
Swivel Radius	33.5mm
Hardness Of Tread	75±5° Shore D
Load Capacity (Dynamic)	20kgs
Load Capacity (Static)	30kgs
Temperature	-20°C to +80°C
Fork Type	Swivel Caster
Stainless	N/A
Electrical Conductivity	N/A
Anti-Static	N/A
Weight	0.07kgs
Standard	ISO22883

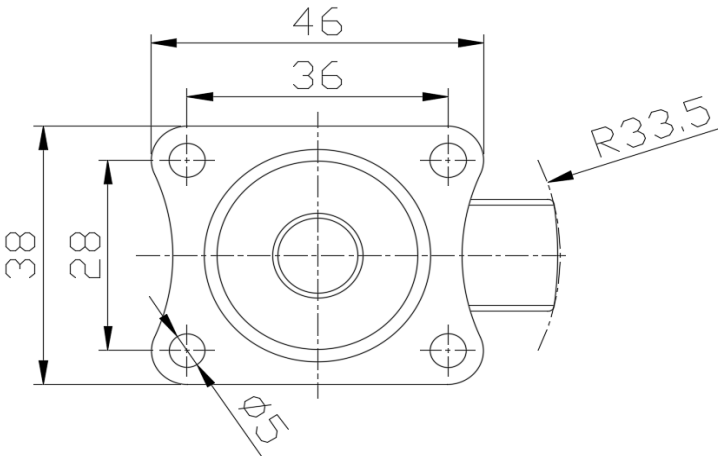
Advantages at a glance

Rolling Resistance	● ● ● ● ●
Operating Noise	● ● ○ ○ ○
Floor Surface Preservation	● ● ○ ○ ○

Dimensions



Mounting



\* For any deviation between metric and imperial spec, please refer to the metric spec.