



1120 Single Raceway, Light Duty Caster Series

Bánh MRC (màu trong suốt) Kích thước: Đường kính × Độ rộng 38×16.5mm

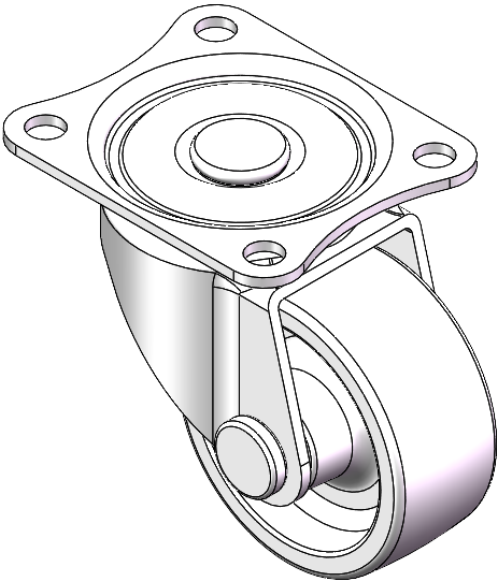
EAN

YJ-11200150072013

Swivel Casters, Riveted and Stamping Top Plate brackets—Bolt Hole Spacing 36 x 15  
Zine-Plated surface, Mounting Type - Top Plate device  
Reinforced Polypropylene and Wheel Tread  
Transparent, Bearing—Ball Bearings.

Wheel surface: Thermoplastic (PA6)  
Wheel Center: Thermoplastic (PA6)

Drawings are for reference only and may differ from the product



Picture may differ from original product

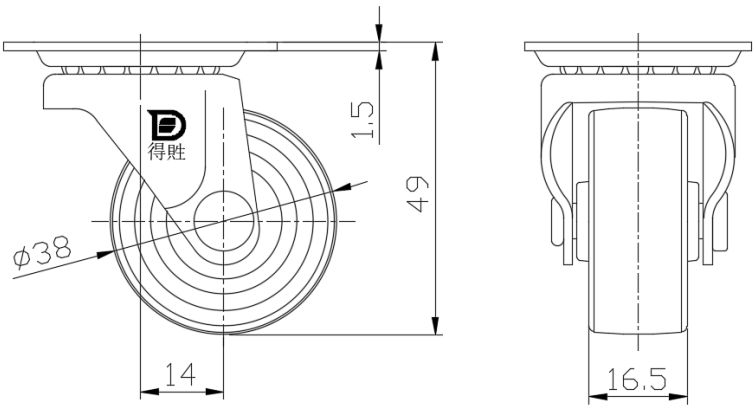
Technical Data

<input checked="" type="radio"/> Imperial <input type="radio"/> Metric	
Wheel Diameter	1-1/2
Wheel Width	11/16 "
Wheel Bearing	Wheels With Ball Bearings
Plate Size	1-7/8 " x 1-1/2 "
Bolt Hole Spacing	1-7/16 " x 1-1/8 "
Plate Hole	1/4 "
Offset	9/16 "
Swivel Interference	2-11/16 "
Overall Height	2 "
Swivel Radius	1-3/8 "
Hardness Of Tread	75±5° Shore D
Load Capacity (Dynamic)	44lbs
Load Capacity (Static)	66lbs
Temperature	-4°F to +176°F
Fork Type	Swivel Caster
Stainless	N/A
Electrical Conductivity	N/A
Anti-Static	N/A
Weight	0.2lbs
Standard	ISO22883

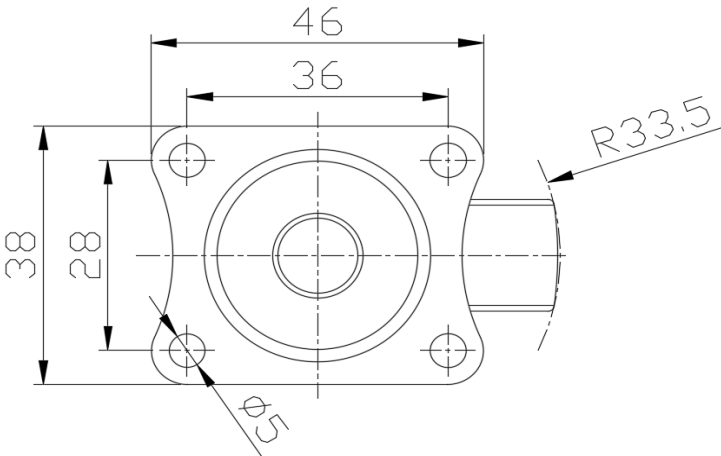
Advantages at a glance

Rolling Resistance	● ● ● ● ●
Operating Noise	● ● ○ ○ ○
Floor Surface Preservation	● ● ○ ○ ○

Dimensions



Mounting



\* For any deviation between metric and imperial spec, please refer to the metric spec.