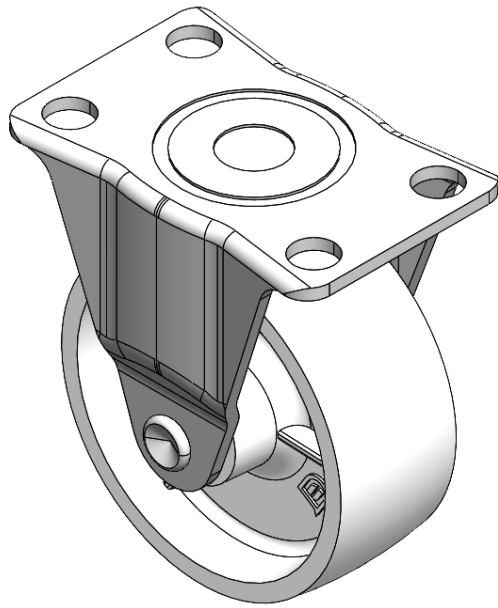


1120 Single Raceway, Light Duty Caster Series



MRC Wheel (Transparent) Diameter × Width 65×26mm

EAN

YJ-11200200071013

Rigid Casters, Stamping Fabricated Caster Fork, Bolt Hole Spacing 55 x 28
Zinc-Plated surface, Mounting Type - Top Plate device
Reinforced Polypropylene and Wheel Tread
Transparent, Bearing—Ball Bearings.

Wheel surface: Thermoplastic (PA6)
Wheel Center: Thermoplastic (PA6)

Drawings are for reference only and may differ from the product.

☒ Metric ☐ Imperial

Wheel Diameter	65mm
Wheel Width	26mm
Wheel Bearing	Wheels With Ball Bearings
Plate Size	70 x 46mm
Bolt Hole Spacing	55 x 28mm
Plate Hole	9mm
Overall Height	80.5mm
Hardness Of Tread	75±5° Shore D
Load Capacity (Dynamic)	35kgs
Load Capacity (Static)	52.5kgs
Temperature	-20°C to +80°C
Fork Type	Rigid Caster
Stainless	N/A
Electrical Conductivity	N/A
Anti-Static	N/A
Weight	0.12kgs
Standard	ISO22883

Rolling Resistance	● ● ● ● ●
Operating Noise	● ● ○ ○ ○
Floor Surface Preservation	● ● ○ ○ ○

Technical drawing of a mechanical part (Fig. 1.10). The part is a rectangular plate with rounded corners, a central circular hole, and four smaller circular holes at the corners. Dimensions: overall width 70, overall height 46, central hole diameter 55, distance from top edge to center of top holes 28, and hole diameter 19.

* For any deviation between metric and imperial spec, please refer to the metric spec.