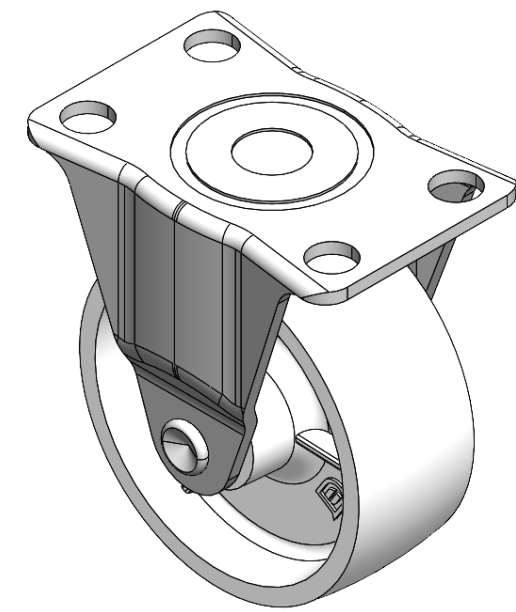


1120 Single Raceway, Light Duty Caster Series



Drawings are for reference only and may differ from the product.

<input checked="" type="radio"/> Imperial <input type="radio"/> Metric	
Wheel Diameter	2-9/16
Wheel Width	1-1/16
Wheel Bearing	Wheels With Ball Bearings
Plate Size	2-13/16 " x 1-7/8 "
Bolt Hole Spacing	2-3/16 " x 1-1/8 "
Plate Hole	23/64 "
Overall Height	3-1/4 "
Hardness Of Tread	75±5° Shore D
Load Capacity (Dynamic)	77lbs
Load Capacity (Static)	116lbs
Temperature	-4°F to +176°F
Fork Type	Rigid Caster
Stainless	N/A
Electrical Conductivity	N/A
Anti-Static	N/A
Weight	0.3lbs
Standard	ISO22883

Rolling Resistance ● ● ● ● ●

Operating Noise ● ● ○ ○ ○ ○

Floor Surface Preservation ● ● ○ ○ ○ ○

Technical drawing of a wheel assembly. The front view (left) shows a wheel with a central hub, spokes, and a tire. Dimensions include a hub diameter of $\varnothing 65$, a tire width of 225, a tire height of 80.5, and a tire depth of 26.5. The side view (right) shows the profile of the wheel and tire, with a tire height of 26.5. The drawing is labeled with 'D' and 'H' in the center of the wheel.

© Copyright 2025 DershengInternational www.dersheng.com