



1120 Single Raceway, Light Duty Caster Series

MRC Wheel (Transparent) Diameter × Width 50×21mm

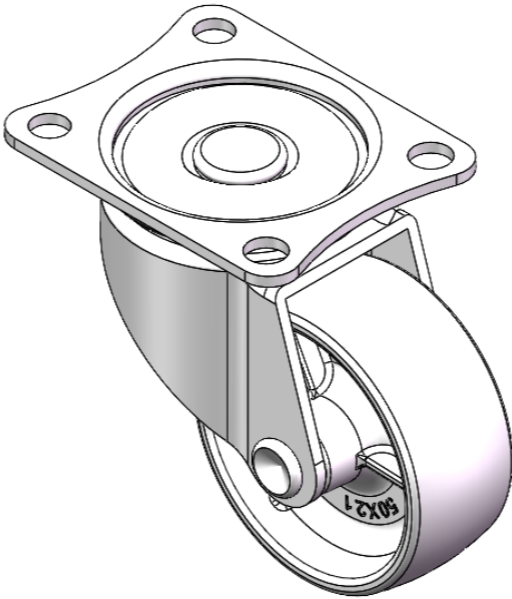
EAN

YJ-11200200072013

Swivel Casters, Riveted and Stamping Top Plate—46 x 35mm Bolt Hole Spacing  
Zine-Plated surface, Mounting Type - Top Plate device  
Reinforced Polypropylene and Wheel Tread  
Transparent, Bearing—Ball Bearings.

Wheel surface: Thermoplastic (PA6)  
Wheel Center: Thermoplastic (PA6)

Drawings are for reference only and may differ from the product



Picture may differ from original product

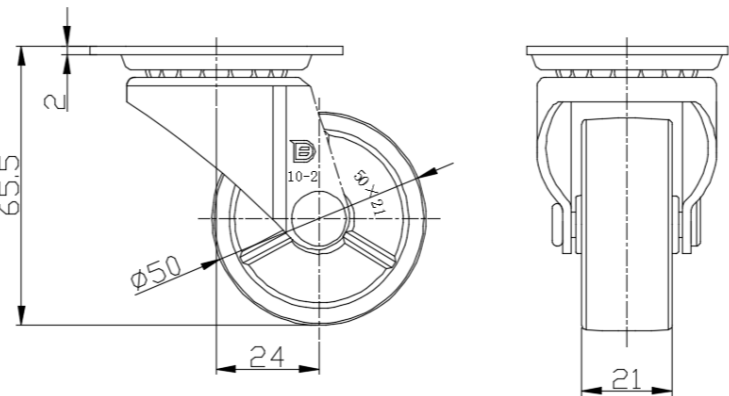
Technical Data

<input checked="" type="radio"/> Metric <input type="radio"/> Imperial	
Wheel Diameter	50mm
Wheel Width	21mm
Wheel Bearing	Wheels With Ball Bearings
Plate Size	59 x 47mm
Bolt Hole Spacing	46 x 35mm
Plate Hole	6.5mm
Offset	24mm
Swivel Interference	100mm
Overall Height	65.5mm
Swivel Radius	50mm
Hardness Of Tread	75±5° Shore D
Load Capacity (Dynamic)	30kgs
Load Capacity (Static)	45kgs
Temperature	-20°C to +80°C
Fork Type	Swivel Caster
Stainless	N/A
Electrical Conductivity	N/A
Anti-Static	N/A
Weight	0.15kgs
Standard	ISO22883

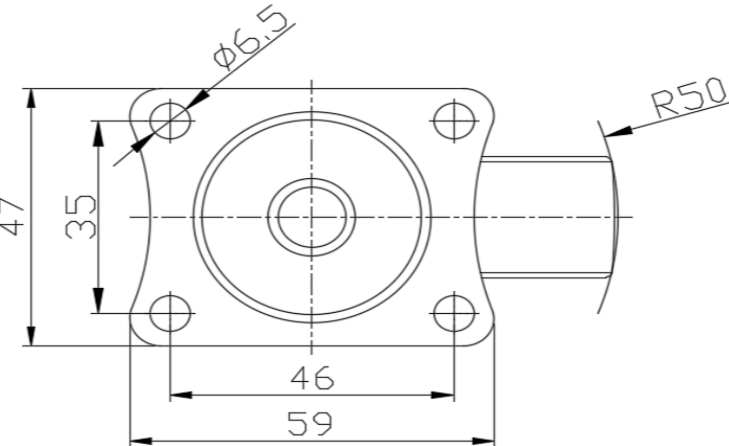
Advantages at a glance

Rolling Resistance	● ● ● ● ●
Operating Noise	● ● ○ ○ ○
Floor Surface Preservation	● ● ○ ○ ○

Dimensions



Mounting



\* For any deviation between metric and imperial spec, please refer to the metric spec.