



1120 Single Raceway, Light Duty Caster Series

MRC Wheel (Transparent) Diameter × Width 50×21mm

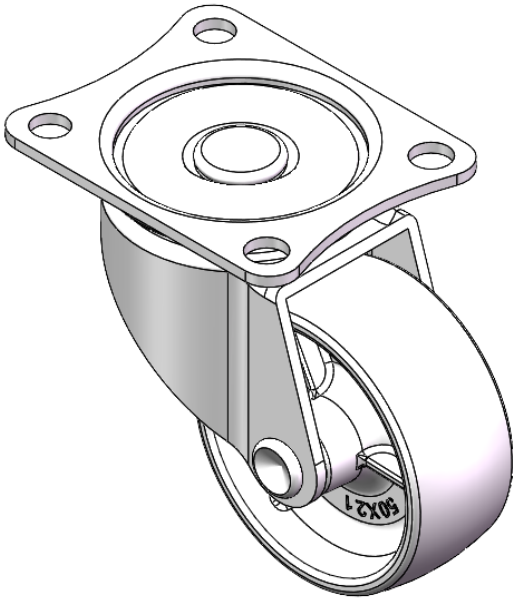
EAN

YJ-11200200072013

Swivel Casters, Riveted and Stamping Top Plate—46 x 35mm Bolt Hole Spacing
Zine-Plated surface, Mounting Type - Top Plate device
Reinforced Polypropylene and Wheel Tread
Transparent, Bearing—Ball Bearings.

Wheel surface: Thermoplastic (PA6)
Wheel Center: Thermoplastic (PA6)

Drawings are for reference only and may differ from the product



Picture may differ from original product

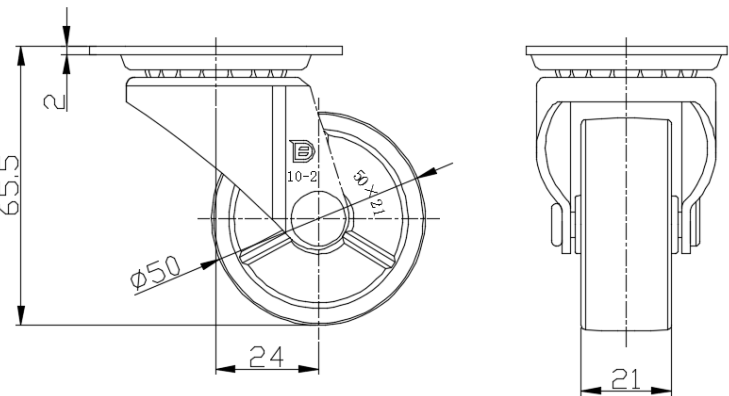
Technical Data

<input checked="" type="radio"/> Imperial <input type="radio"/> Metric	
Wheel Diameter	2 "
Wheel Width	7/8 "
Wheel Bearing	Wheels With Ball Bearings
Plate Size	2-3/8 " x 1-7/8 "
Bolt Hole Spacing	1-7/8 " x 1-3/8 "
Plate Hole	1/4 "
Offset	1 "
Swivel Interference	4 "
Overall Height	2-5/8 "
Swivel Radius	2 "
Hardness Of Tread	75±5° Shore D
Load Capacity (Dynamic)	66lbs
Load Capacity (Static)	99lbs
Temperature	-4°F to +176°F
Fork Type	Swivel Caster
Stainless	N/A
Electrical Conductivity	N/A
Anti-Static	N/A
Weight	0.3lbs
Standard	ISO22883

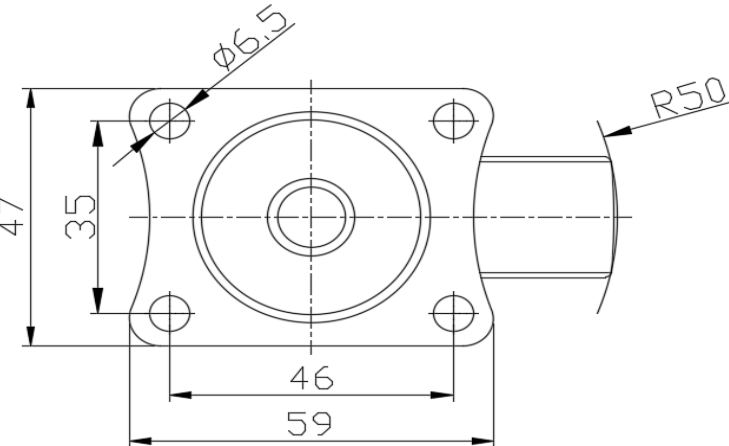
Advantages at a glance

Rolling Resistance	● ● ● ● ●
Operating Noise	● ● ○ ○ ○
Floor Surface Preservation	● ● ○ ○ ○

Dimensions



Mounting



* For any deviation between metric and imperial spec, please refer to the metric spec.