



1120 Single Raceway, Light Duty Caster Series

PPR Wheel (White-Black Flat) Wheel Diameter × Wheel Width 50 x 22mm

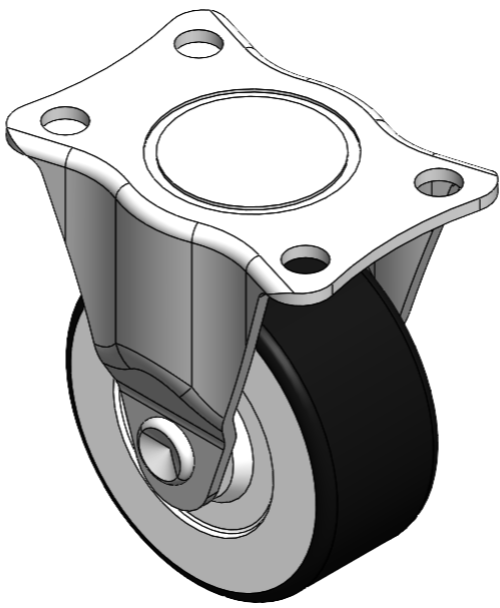
A

YJ-11200200261013

Rigid Casters, Stamping Fabricated Caster Fork, 45 x 25mm Bolt Hole Spacing Zine-Plated surface, Mounting Type - Top Plate device Reinforced Polypropylene and Wheel Tread Transparent, Bearing—Ball Bearings.

Wheel surface: Thermoplastic (PA6)
Wheel Center: Thermoplastic (PA6)

Drawings are for reference only and may differ from the product



Picture may differ from original product

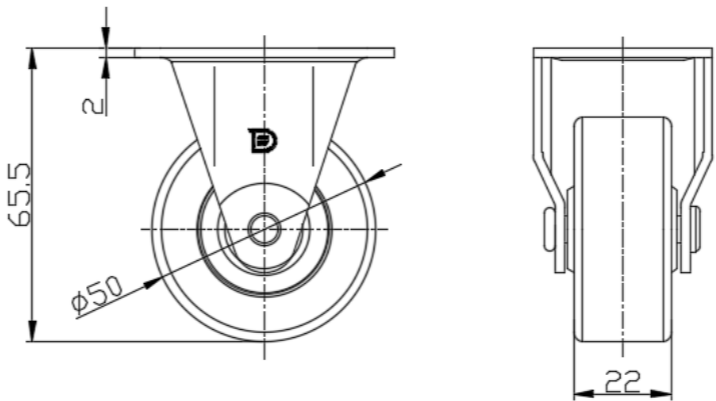
Technical Data

<input checked="" type="radio"/> Metric <input type="radio"/> Imperial	
Wheel Diameter	50mm
Wheel Width	21mm
Wheel Bearing	Wheels With Ball Bearings
Plate Size	58 x 40mm
Bolt Hole Spacing	45 x 25mm
Plate Hole	6.5mm
Overall Height	65.5mm
Hardness Of Tread	82±5° Shore A
Load Capacity (Dynamic)	50kgs
Load Capacity (Static)	75kgs
Temperature	-20°C to +60°C
Fork Type	Rigid Caster
Stainless	N/A
Electrical Conductivity	N/A
Anti-Static	N/A
Weight	0.11kgs
Standard	ISO22883

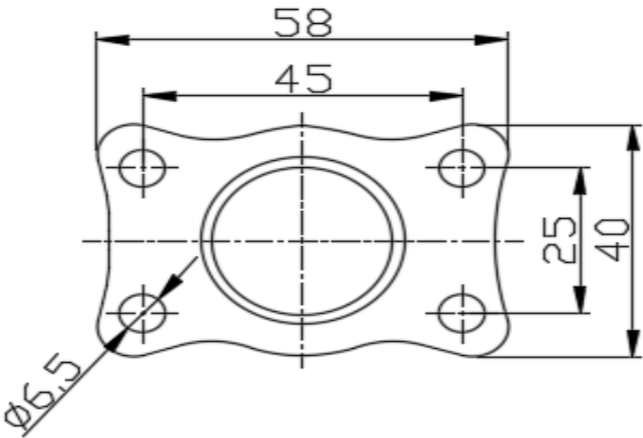
Advantages at a glance

Rolling Resistance	● ● ● ● ○
Operating Noise	● ● ● ● ○
Floor Surface Preservation	● ● ● ● ●

Dimensions



Mounting



* For any deviation between metric and imperial spec, please refer to the metric spec.