



1120 Single Raceway, Light Duty Caster Series

MRC Wheel (Transparent) Diameter × Width 65×26mm

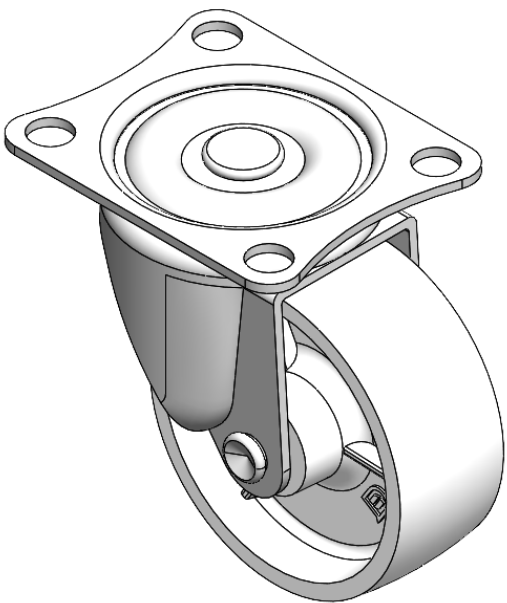
EAN

YJ-11200250072013

Swivel Casters, Riveted and Stamping Top Plate, 55 x 28mm Bolt Hole Spacing
Zine-Plated surface, Mounting Type - Top Plate device
Reinforced Polypropylene and Wheel Tread
Transparent, Bearing—Ball Bearings.

Wheel surface: Thermoplastic (PA6)
Wheel Center: Thermoplastic (PA6)

Drawings are for reference only and may differ from the product



Picture may differ from original product

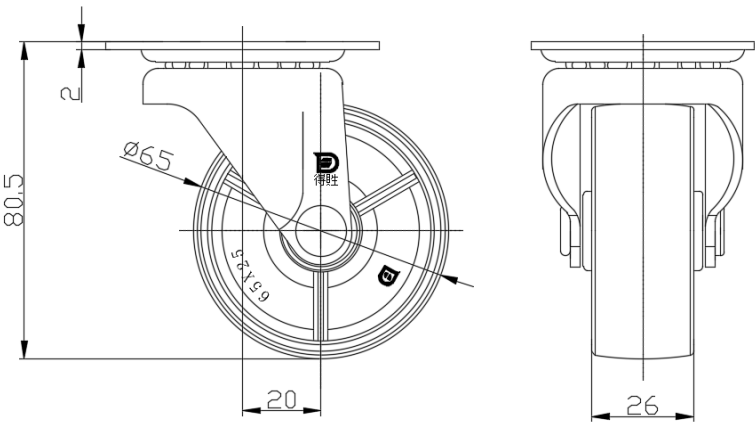
Technical Data

<input checked="" type="radio"/> Metric <input type="radio"/> Imperial	
Wheel Diameter	65mm
Wheel Width	26mm
Wheel Bearing	Wheels With Ball Bearings
Plate Size	70 x 57mm
Bolt Hole Spacing	55 x 42mm
Plate Hole	9mm
Offset	20mm
Swivel Interference	108mm
Overall Height	80.5mm
Swivel Radius	54mm
Hardness Of Tread	75±5° Shore D
Load Capacity (Dynamic)	35kgs
Load Capacity (Static)	52.5kgs
Temperature	-20°C to +80°C
Fork Type	Swivel Caster
Stainless	N/A
Electrical Conductivity	N/A
Anti-Static	N/A
Weight	0.24kgs
Standard	ISO22883

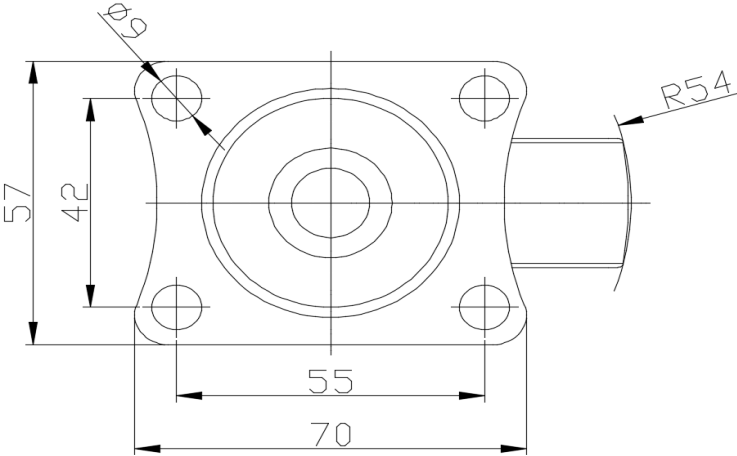
Advantages at a glance

Rolling Resistance	● ● ● ● ●
Operating Noise	● ● ○ ○ ○
Floor Surface Preservation	● ● ○ ○ ○

Dimensions



Mounting



* For any deviation between metric and imperial spec, please refer to the metric spec.