



1120 Single Raceway, Light Duty Caster Series

MRC Wheel (Transparent) Diameter × Width 65×26mm

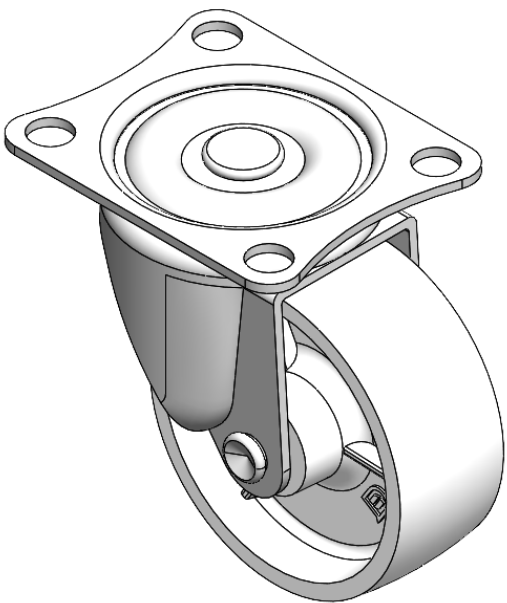
EAN

YJ-11200250072013

Swivel Casters, Riveted and Stamping Top Plate, 55 x 28mm Bolt Hole Spacing
Zine-Plated surface, Mounting Type - Top Plate device
Reinforced Polypropylene and Wheel Tread
Transparent, Bearing—Ball Bearings.

Wheel surface: Thermoplastic (PA6)
Wheel Center: Thermoplastic (PA6)

Drawings are for reference only and may differ from the product



Picture may differ from original product

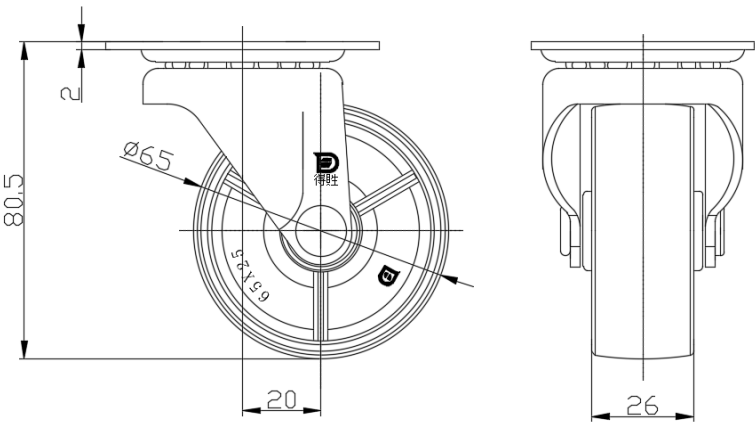
Technical Data

<input checked="" type="radio"/> Imperial <input type="radio"/> Metric	
Wheel Diameter	2-9/16
Wheel Width	1-1/16
Wheel Bearing	Wheels With Ball Bearings
Plate Size	2-13/16 " x 2-1/4 "
Bolt Hole Spacing	2-3/16 " x 1-11/16 "
Plate Hole	23/64 "
Offset	13/16 "
Swivel Interference	4-5/16 "
Overall Height	3-1/4 "
Swivel Radius	2-3/16 "
Hardness Of Tread	75±5° Shore D
Load Capacity (Dynamic)	77lbs
Load Capacity (Static)	116lbs
Temperature	-4°F to +176°F
Fork Type	Swivel Caster
Stainless	N/A
Electrical Conductivity	N/A
Anti-Static	N/A
Weight	0.5lbs
Standard	ISO22883

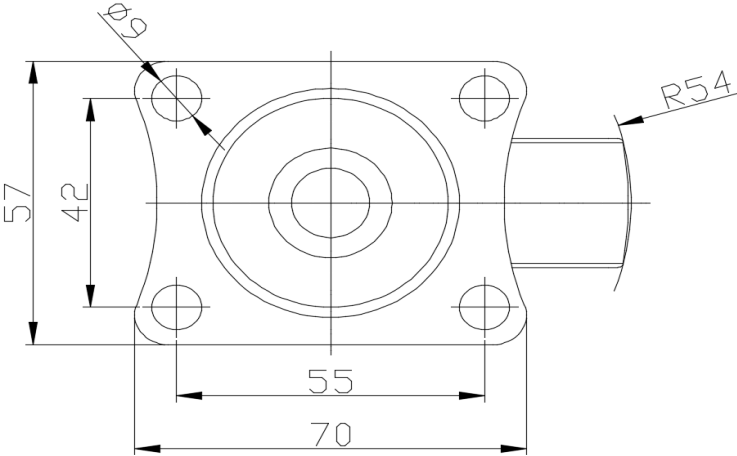
Advantages at a glance

Rolling Resistance	● ● ● ● ●
Operating Noise	● ● ○ ○ ○
Floor Surface Preservation	● ● ○ ○ ○

Dimensions



Mounting



* For any deviation between metric and imperial spec, please refer to the metric spec.