



1121 Double Raceway, Light Duty Caster Series

Rubber Wheel (Diameter × Width 40×17mm)

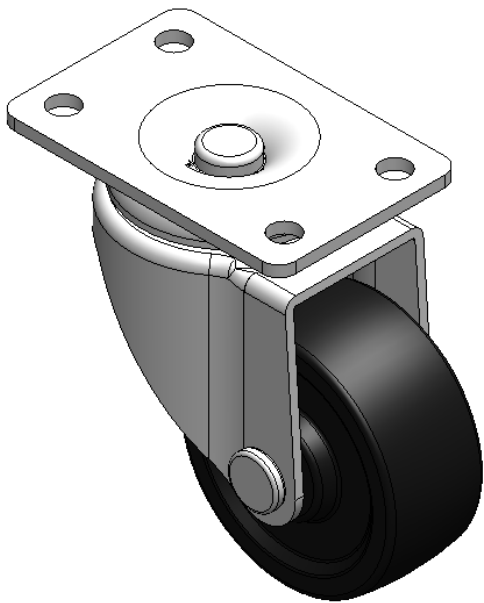
EAN

YJ-11210150062013

Swivel Casters, Riveted and Stamping Top Plate brackets—40x20mm Bolt Hole Spacing  
Zine-Plated surface, Top Plate type (2T) Mounting Type device  
Reinforced Polypropylene, High-Quality Resilient Rubber Wheel Tread  
Black, wheels—Plain Bearing.

Wheel surface: High-quality elastic rubber  
Wheel Center: Thermoplastic (PA6)

Drawings are for reference only and may differ from the product



Picture may differ from original product

Technical Data

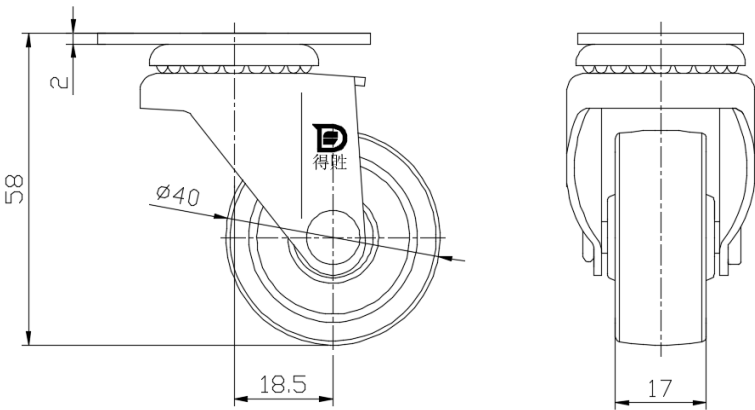
☒ Metric ☐ Imperial

Wheel Diameter	40mm
Wheel Width	17mm
Wheel Bearing	Wheel With Plain Bearing
Plate Size	51 x 31mm
Bolt Hole Spacing	40x20mm
Plate Hole	5mm
Offset	18.5mm
Swivel Interference	77mm
Overall Height	58mm
Swivel Radius	38.5mm
Hardness Of Tread	80±5° Shore A
Load Capacity (Dynamic)	20kgs
Load Capacity (Static)	30kgs
Temperature	-20°C to +120°C
Fork Type	Swivel Caster
Stainless	N/A
Electrical Conductivity	N/A
Anti-Static	N/A
Weight	0.13kgs
Standard	ISO22883

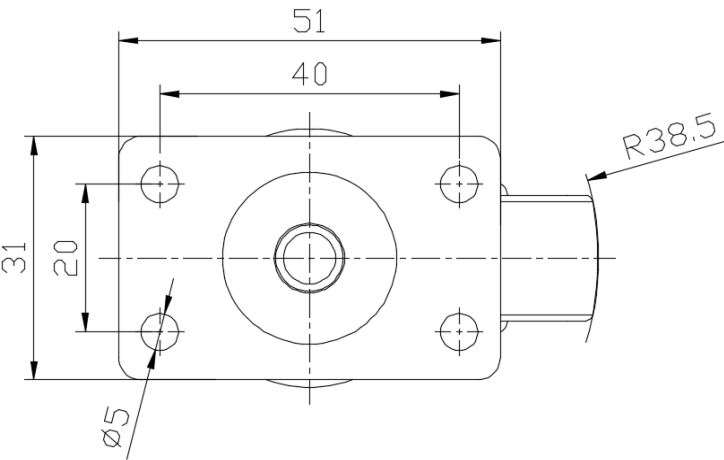
Advantages at a glance

Rolling Resistance	● ● ● ○ ○
Operating Noise	● ● ● ● ○
Floor Surface Preservation	● ● ● ● ○

Dimensions



Mounting



\* For any deviation between metric and imperial spec, please refer to the metric spec.