



1121 Double Raceway, Light Duty Caster Series

Rubber Wheel (Diameter × Width 40×17mm)

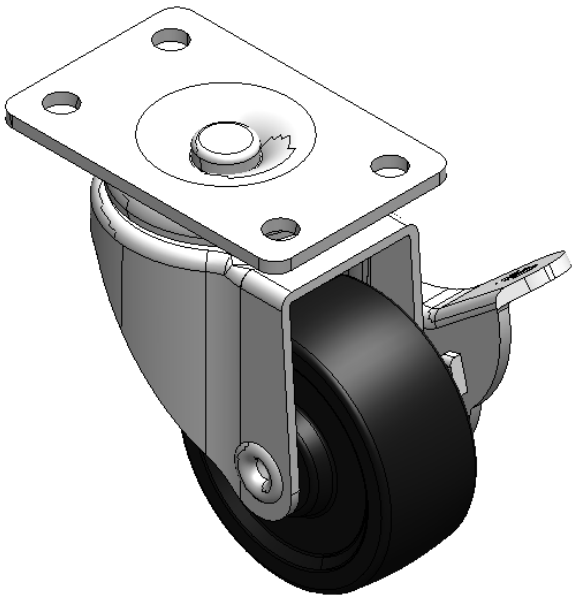
EAN

YJ-11210150064013

Equipped with side (wheel) brakes and a With locking system for the Casters. Riveted and Stamping Top Plate legs—40x20mm Bolt Hole Spacing. Zine-Plated surface, Top Plate type (2T) Mounting Type device. Reinforced Polypropylene, High-Quality Resilient Rubber Wheel Tread. Black, wheels—Plain Bearing.

Wheel surface: High-quality elastic rubber
Wheel Center: Thermoplastic (PA6)

Drawings are for reference only and may differ from the product



Picture may differ from original product

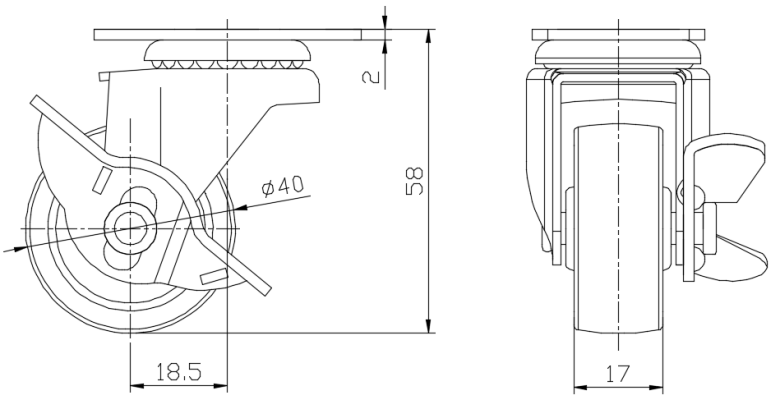
Technical Data

<input checked="" type="radio"/> Imperial <input type="radio"/> Metric	
Wheel Diameter	1-5/8
Wheel Width	11/16 "
Wheel Bearing	Wheel With Plain Bearing
Plate Size	1-15/16 " x 1-1/4 "
Bolt Hole Spacing	1-5/8 x 13/16
Plate Hole	1/4 "
Offset	3/4 "
Swivel Interference	3-7/16 "
Overall Height	2-5/16 "
Swivel Radius	1-11/16 "
Hardness Of Tread	80±5° Shore A
Load Capacity (Dynamic)	44lbs
Load Capacity (Static)	66lbs
Temperature	-4°F to +248°F
Fork Type	Swivel Caster With Side Brake
Stainless	N/A
Electrical Conductivity	N/A
Anti-Static	N/A
Weight	0.3lbs
Standard	ISO22883

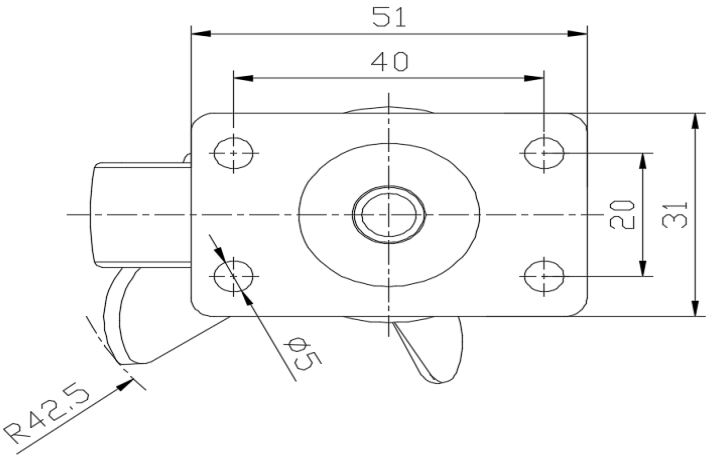
Advantages at a glance

Rolling Resistance	● ● ● ○ ○
Operating Noise	● ● ● ● ○
Floor Surface Preservation	● ● ● ● ○

Dimensions



Mounting



* For any deviation between metric and imperial spec, please refer to the metric spec.