



1121 Double Raceway, Light Duty Caster Series

Rubber Wheel (Diameter × Width 40×17mm)

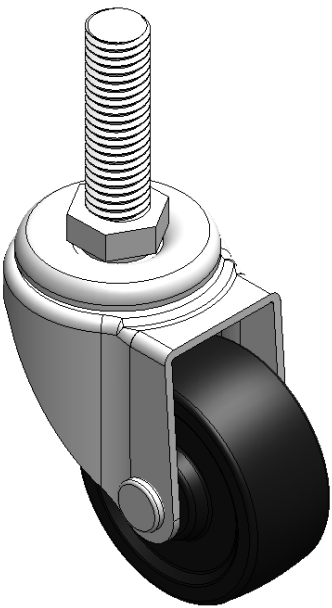
EAN

YJ-11210150065093

Portable Casters, Threaded Stem Stamping Fork—3/8"-16 teeth  
Zine-Plated surface, Mounting Type - Threaded Stem device  
Reinforced Polypropylene, High-Quality Resilient Rubber Wheel Tread  
Black, wheels—Plain Bearing.

Wheel surface: High-quality elastic rubber  
Wheel Center: Thermoplastic (PA6)

Drawings are for reference only and may differ from the product



Picture may differ from original product

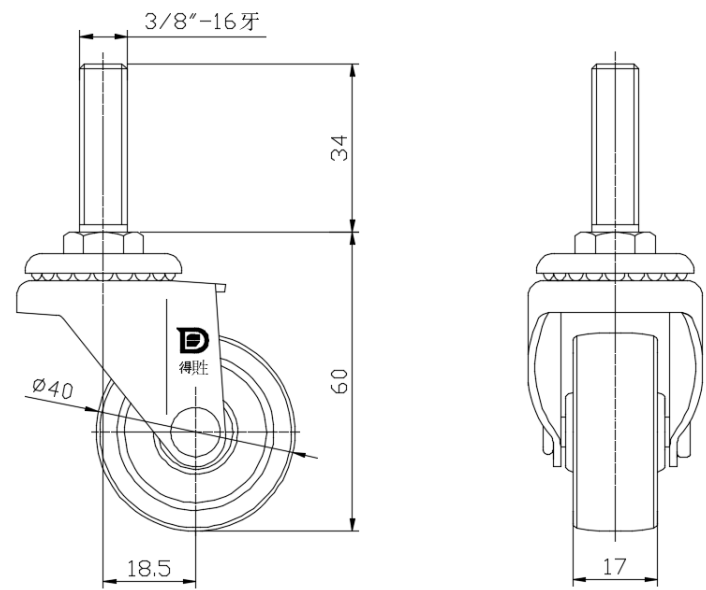
Technical Data

|  |                          |
|--|--------------------------|
| <input checked="" type="radio"/> Imperial <input type="radio"/> Metric |                          |
| Wheel Diameter   | 1-5/8                    |
| Wheel Width  | 11/16 "                  |
| Wheel Bearing  | Wheel With Plain Bearing |
| Threaded Stem  | 3/8 " -16牙               |
| Threaded Length  | 1-3/8 "                  |
| Offset   | 3/4 "                    |
| Swivel Interference  | 3-1/16 "                 |
| Overall Height   | 2-7/16 "                 |
| Swivel Radius  | 1-11/16 "                |
| Hardness Of Tread  | 80±5° Shore A            |
| Load Capacity (Dynamic)  | 44lbs                    |
| Load Capacity (Static)   | 66lbs                    |
| Temperature  | -4°F to +248°F           |
| Fork Type  | Swivel Caster            |
| Stainless  | N/A                      |
| Electrical Conductivity  | N/A                      |
| Anti-Static  | N/A                      |
| Weight   | 0.3lbs                   |
| Standard   | ISO22883                 |

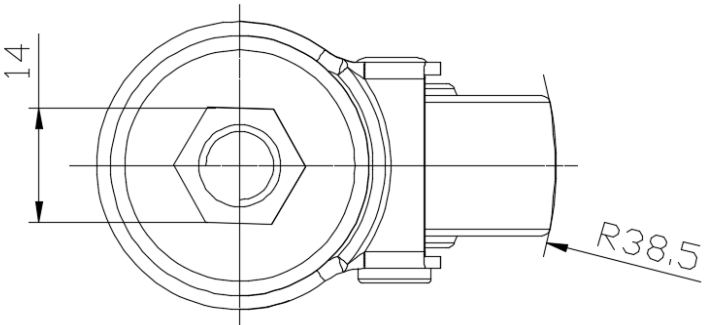
Advantages at a glance

|                            |           |
|----------------------------|-----------|
| Rolling Resistance         | ● ● ● ○ ○ |
| Operating Noise            | ● ● ● ● ○ |
| Floor Surface Preservation | ● ● ● ● ○ |

Dimensions



Mounting



\* For any deviation between metric and imperial spec, please refer to the metric spec.