

1121 Double Raceway, Light Duty Caster Series

Bánh MRC (màu trong suốt) Kích thước: Đường kính × Độ rộng 38×16.5mm

D

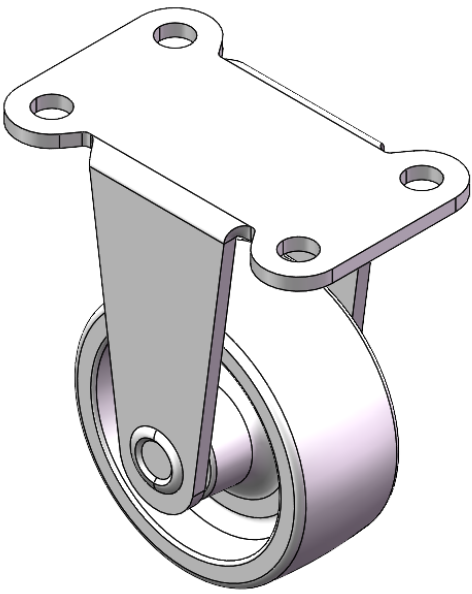
YJ-11210150071013

Rigid Casters, Stamping Fabricated Caster Fork—40x20mm Bolt Hole Spacing Zine-Plated surface, Mounting Type - Top Plate device Reinforced Polypropylene and Wheel Tread Transparent, Bearing—Ball Bearings.

Wheel surface: Thermoplastic (PA6)

Wheel Center: Thermoplastic (PA6)

Drawings are for reference only and may differ from the product



Picture may differ from original product

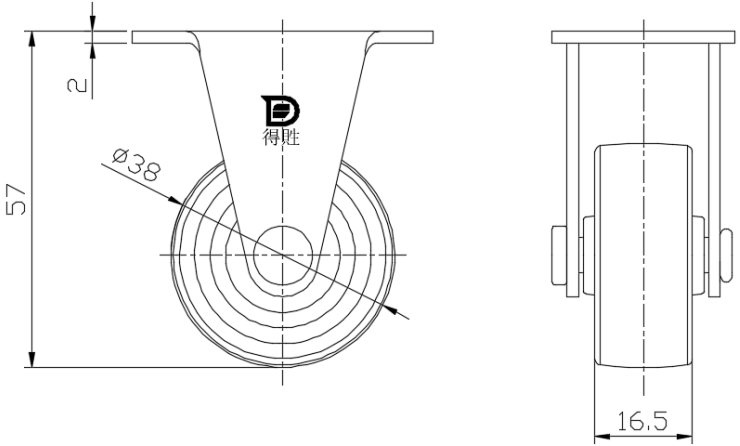
Technical Data

| | |
|--|---------------------------|
| <input checked="" type="radio"/> Imperial <input type="radio"/> Metric | |
| Wheel Diameter | 38mm |
| Wheel Width | 16.5mm |
| Wheel Bearing | Wheels With Ball Bearings |
| Plate Size | 51 x 31mm |
| Bolt Hole Spacing | 40x20mm |
| Plate Hole | 5mm |
| Overall Height | 57mm |
| Hardness Of Tread | 82±5° Shore D |
| Load Capacity (Dynamic) | 20kgs |
| Load Capacity (Static) | 30kgs |
| Temperature | -25°C to +80°C |
| Fork Type | Rigid Caster |
| Stainless | N/A |
| Electrical Conductivity | N/A |
| Anti-Static | N/A |
| Weight | 0.06kgs |
| Standard | ISO22883 |

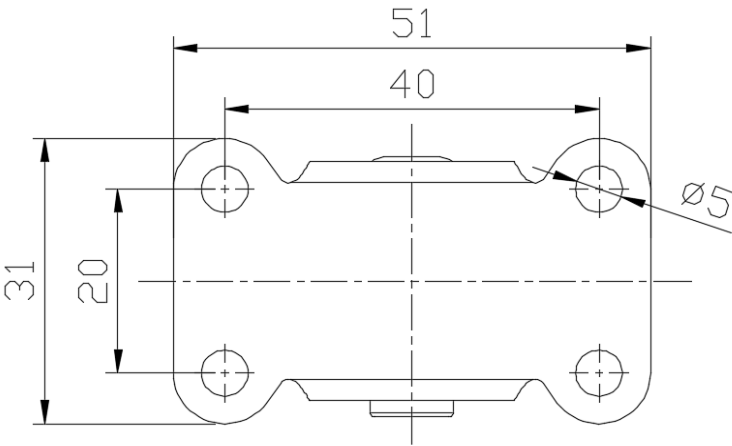
Advantages at a glance

| | |
|----------------------------|-----------|
| Rolling Resistance | ● ● ● ● ● |
| Operating Noise | ● ● ○ ○ ○ |
| Floor Surface Preservation | ● ● ○ ○ ○ |

Dimensions



Mounting



* For any deviation between metric and imperial spec, please refer to the metric spec.