

1121 Double Raceway, Light Duty Caster Series

Bánh MRC (màu trong suốt) Kích thước: Đường kính × Độ rộng 38×16.5mm

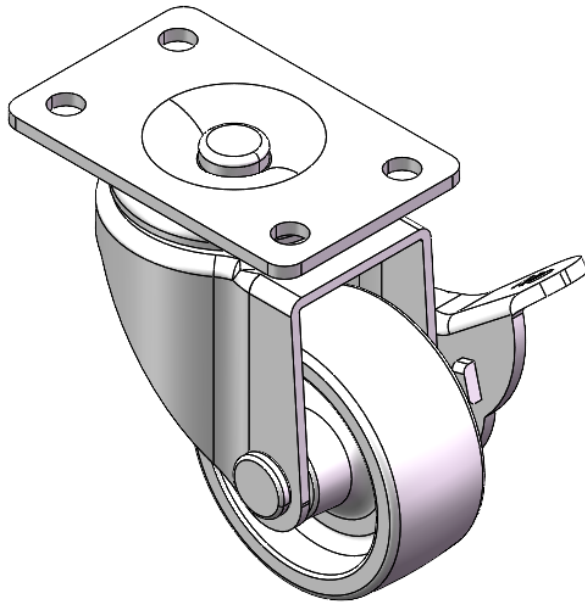
D

YJ-11210150074013

Equipped with side (wheel) brakes and a With locking system for the Casters. Riveted and Stamping Top Plate legs—40x20mm Bolt Hole Spacing. Zine-Plated surface, Top Plate type (2T) Mounting Type device. Reinforced Polypropylene and Wheel Tread. Transparent, Bearing—Ball Bearings.

Wheel surface: Thermoplastic (PA6)
Wheel Center: Thermoplastic (PA6)

Drawings are for reference only and may differ from the product



Picture may differ from original product

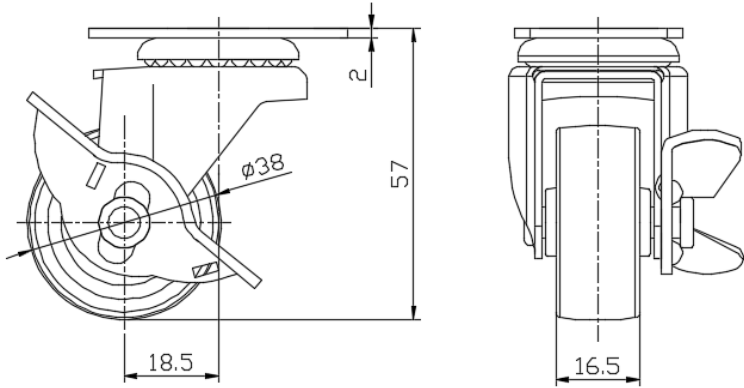
Technical Data

<input checked="" type="radio"/> Imperial <input type="radio"/> Metric	
Wheel Diameter	38mm
Wheel Width	16.5mm
Wheel Bearing	Wheels With Ball Bearings
Plate Size	51 x 31mm
Bolt Hole Spacing	40x20mm
Plate Hole	5mm
Offset	18.5mm
Swivel Interference	85mm
Overall Height	58mm
Swivel Radius	42.5mm
Hardness Of Tread	75±5° Shore D
Load Capacity (Dynamic)	20kgs
Load Capacity (Static)	30kgs
Temperature	-20°C to +80°C
Fork Type	Swivel Caster With Side Brake
Stainless	N/A
Electrical Conductivity	N/A
Anti-Static	N/A
Weight	0.13kgs
Standard	ISO22883

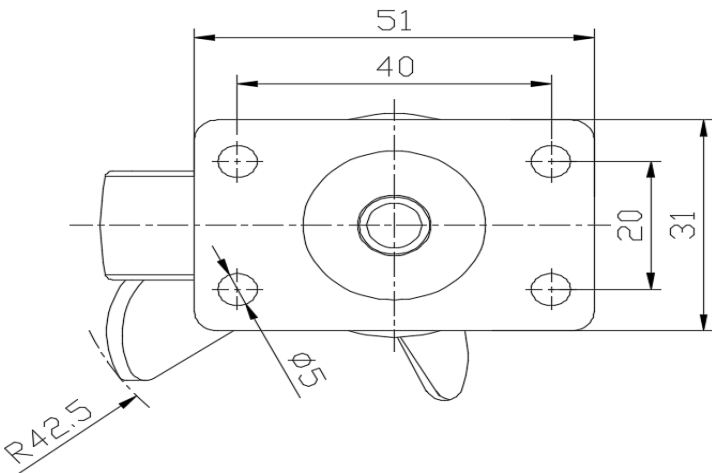
Advantages at a glance

Rolling Resistance	● ● ● ● ●
Operating Noise	● ● ○ ○ ○
Floor Surface Preservation	● ● ○ ○ ○

Dimensions



Mounting



* For any deviation between metric and imperial spec, please refer to the metric spec.