



1121 Double Raceway, Light Duty Caster Series

Bánh MRC (màu trong suốt) Kích thước: Đường kính × Độ rộng 38×16.5mm

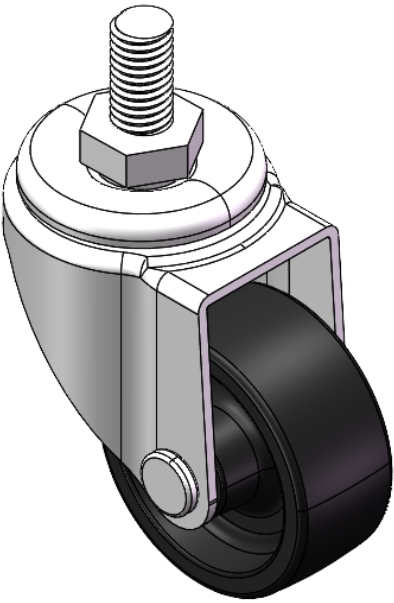
EAN

YJ-11210150075063

Portable Casters, Threaded Stem Stamping Fork—M8-P1.25  
Zine-Plated surface, Mounting Type - Threaded Stem device  
Reinforced Polypropylene and Wheel Tread  
Black, Bearing—Ball Bearings.

Wheel surface: Thermoplastic (PA6)  
Wheel Center: Thermoplastic (PA6)

Drawings are for reference only and may differ from the product



Picture may differ from original product

Technical Data

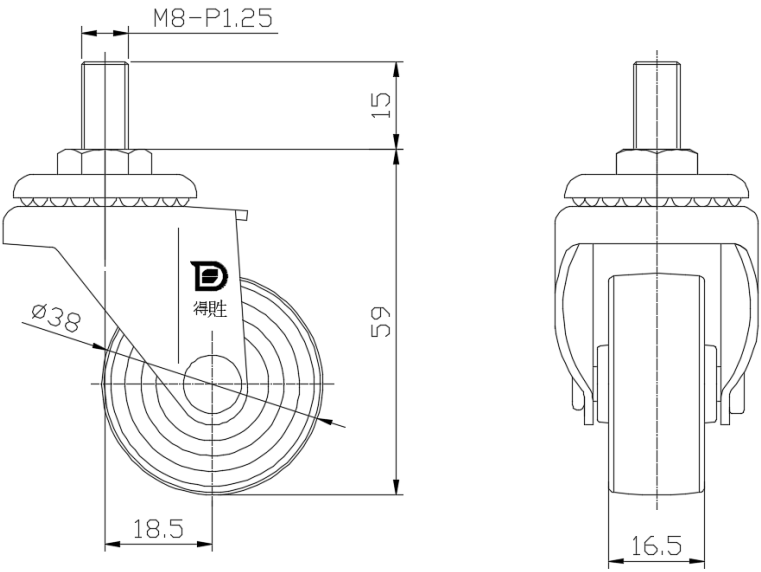
☒ Metric ☐ Imperial

Wheel Diameter	38mm
Wheel Width	16.5mm
Wheel Bearing	Wheels With Ball Bearings
Threaded Stem	M8-P1.25
Threaded Length	15mm
Offset	18.5mm
Swivel Interference	76mm
Overall Height	59mm
Swivel Radius	38mm
Hardness Of Tread	75±5° Shore D
Load Capacity (Dynamic)	20kgs
Load Capacity (Static)	30kgs
Temperature	-20°C to +80°C
Fork Type	Swivel Caster
Stainless	N/A
Electrical Conductivity	N/A
Anti-Static	N/A
Weight	0.10kgs
Standard	ISO22883

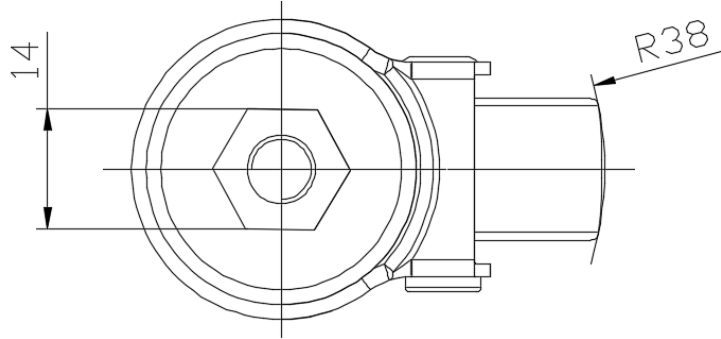
Advantages at a glance

Rolling Resistance	● ● ● ● ●
Operating Noise	● ● ○ ○ ○
Floor Surface Preservation	● ● ○ ○ ○

Dimensions



Mounting



\* For any deviation between metric and imperial spec, please refer to the metric spec.