



1121 Double Raceway, Light Duty Caster Series

Bánh MRC (màu trong suốt) Kích thước: Đường kính × Độ rộng 38×16.5mm

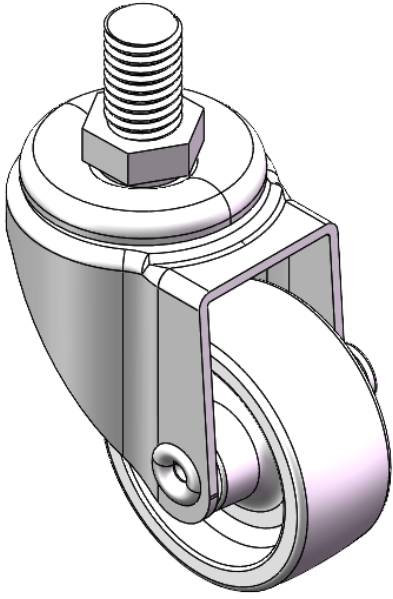
EAN

YJ-11210150075083

Portable Casters, Threaded Stem Stamping Fork—3/8"-16 teeth Zine-Plated surface, Mounting Type - Threaded Stem hardware Reinforced Polypropylene Wheel Center and rim Transparent, Ball Bearings.

Wheel surface: Thermoplastic (PA6)  
Wheel Center: Thermoplastic (PA6)

Drawings are for reference only and may differ from the product



Picture may differ from original product

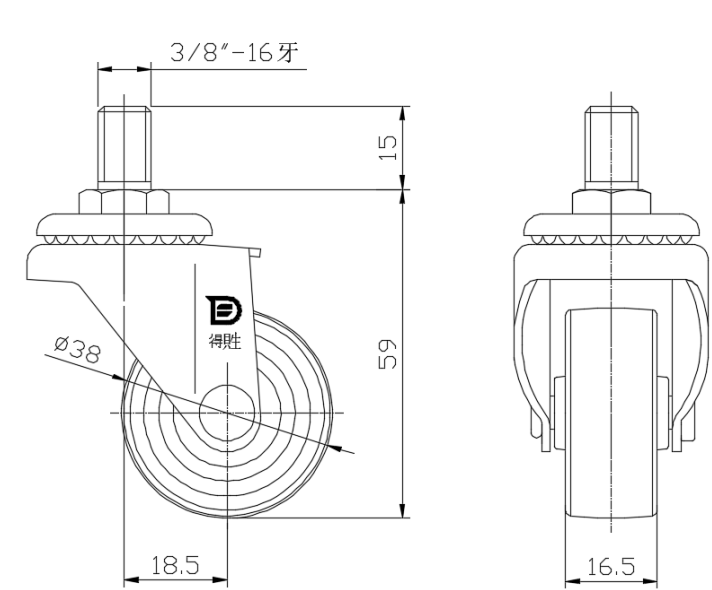
Technical Data

<input checked="" type="radio"/> Imperial <input type="radio"/> Metric	
Wheel Diameter	1-1/2
Wheel Width	11/16 "
Wheel Bearing	Wheels With Ball Bearings
Threaded Stem	3/8 " -16牙
Threaded Length	3/4 "
Offset	3/4 "
Swivel Interference	3 "
Overall Height	2-3/8 "
Swivel Radius	1-1/2 "
Hardness Of Tread	75±5° Shore D
Load Capacity (Dynamic)	44lbs
Load Capacity (Static)	66lbs
Temperature	-4°F to +176°F
Fork Type	Swivel Caster
Stainless	N/A
Electrical Conductivity	N/A
Anti-Static	N/A
Weight	0.2lbs
Standard	ISO22883

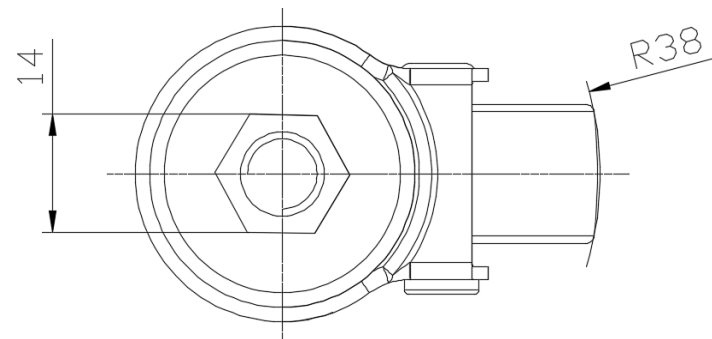
Advantages at a glance

Rolling Resistance	● ● ● ● ●
Operating Noise	● ● ○ ○ ○
Floor Surface Preservation	● ● ○ ○ ○

Dimensions



Mounting



\* For any deviation between metric and imperial spec, please refer to the metric spec.