



1121 Double Raceway, Light Duty Caster Series

PP (black) Wheel diameter × Wheel width 38×16.5 mm

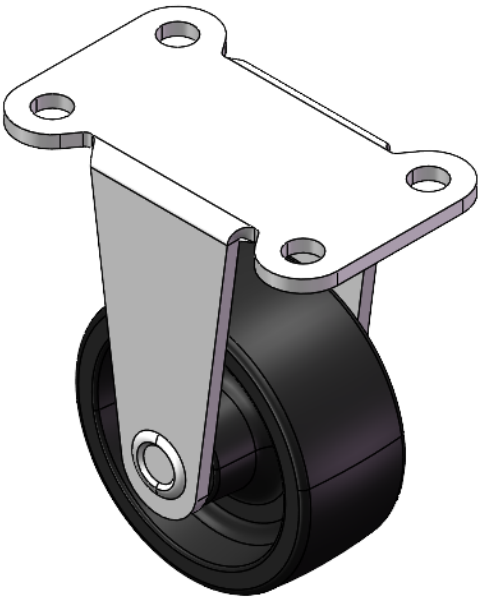
EAN

YJ-11210150291023

Rigid Casters, Stamping Fabricated Caster Fork—40x20mm Bolt Hole Spacing Zine-Plated surface, Mounting Type - Top Plate device Polypropylene Wheel Center and Wheel Tread Transparent, Bearing—Ball Bearings.

Wheel surface: PP polypropylene
Wheel Center: PP polypropylene

Drawings are for reference only and may differ from the product



Picture may differ from original product

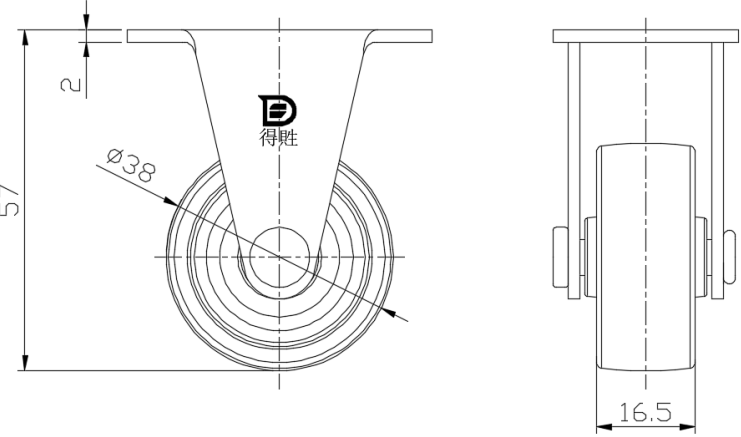
Technical Data

<input checked="" type="radio"/> Imperial <input type="radio"/> Metric	
Wheel Diameter	1-1/2
Wheel Width	11/16 "
Wheel Bearing	Wheels With Ball Bearings
Plate Size	1-15/16 " x 1-1/4 "
Bolt Hole Spacing	1-5/8 x 13/16
Plate Hole	1/4 "
Overall Height	2-1/4 "
Hardness Of Tread	65±5° Shore D
Load Capacity (Dynamic)	44lbs
Load Capacity (Static)	66lbs
Temperature	14°F to +140°F
Fork Type	Rigid Caster
Stainless	N/A
Electrical Conductivity	N/A
Anti-Static	N/A
Weight	0.1lbs
Standard	ISO22883

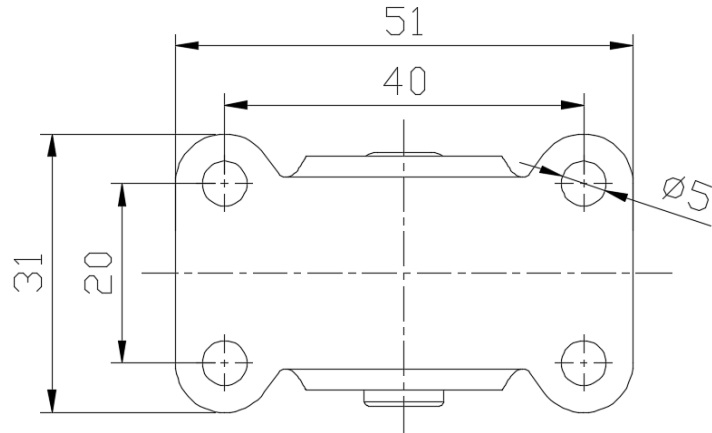
Advantages at a glance

Rolling Resistance	● ● ● ● ●
Operating Noise	● ● ● ○ ○
Floor Surface Preservation	● ● ● ○ ○

Dimensions



Mounting



* For any deviation between metric and imperial spec, please refer to the metric spec.