

1121 Double Raceway, Light Duty Caster Series

Rubber wheel Wheel diameter × Wheel width 65×21 mm

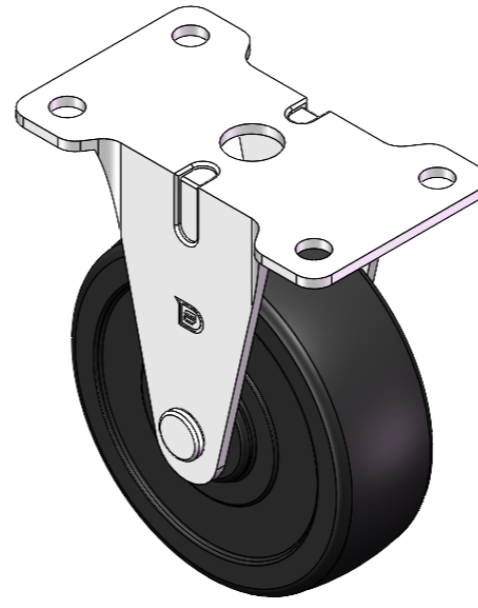
EAN

YJ-11210250061013

Rigid Casters, Stamping Fabricated Caster Fork—56x28mm Bolt Hole Spacing
Zinc-Plated surface, Top Plate type (2T) Mounting Type device
Reinforced Polypropylene, High-Quality Resilient Rubber Wheel Tread
Black, wheels—Plain Bearing.

Wheel surface: High-quality elastic rubber
Wheel Center: Thermoplastic (PA6)

Drawings are for reference only and may differ from the product



Picture may differ from original product

Technical Data

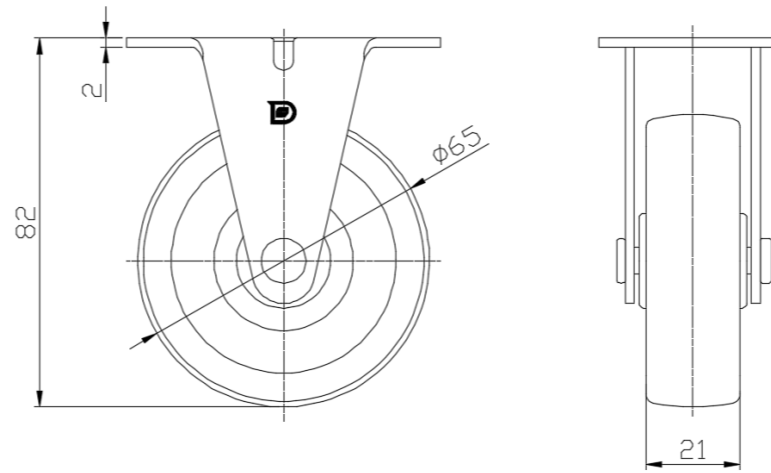
Metric Imperial

Wheel Diameter	65mm
Wheel Width	21mm
Wheel Bearing	Wheel With Plain Bearing
Plate Size	70 x 42mm
Bolt Hole Spacing	56x28mm
Plate Hole	6mm
Overall Height	82mm
Hardness Of Tread	80±5° Shore A
Load Capacity (Dynamic)	40kgs
Load Capacity (Static)	60kgs
Temperature	-20°C to +120°C
Fork Type	Rigid Caster
Stainless	N/A
Electrical Conductivity	N/A
Anti-Static	N/A
Weight	0.19kgs
Standard	ISO22883

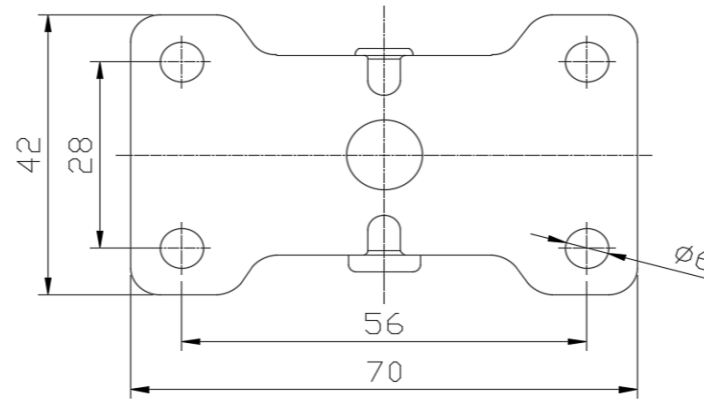
Advantages at a glance

Rolling Resistance	● ● ● ○ ○
Operating Noise	● ● ● ● ○
Floor Surface Preservation	● ● ● ● ○

Dimensions



Mounting



* For any deviation between metric and imperial spec, please refer to the metric spec.