

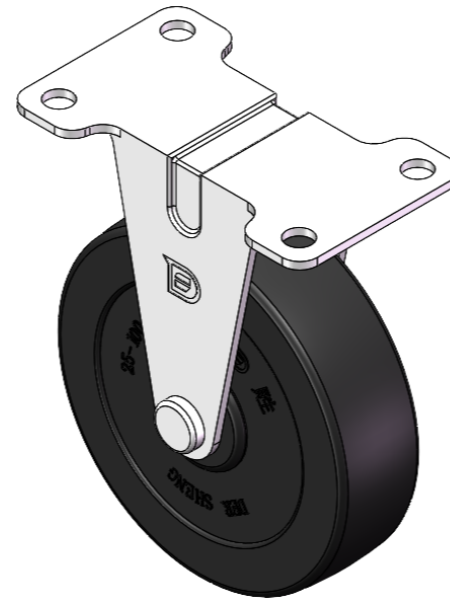
1121 Double Raceway, Light Duty Caster Series



Rubber Wheel Diameter × Wheel Width 100 × 27mm

EAN

YJ-11210400061013



Drawings are for reference only and may differ from the product

Picture may differ from original product

Technical Data

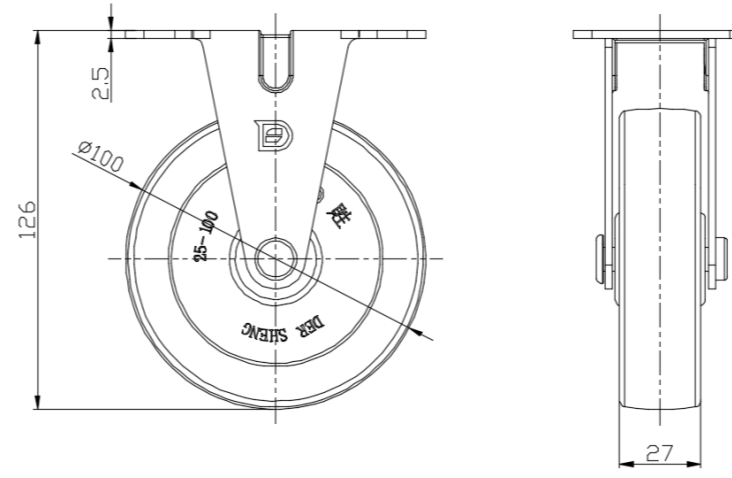
Metric Imperial

| | |
|-------------------------|--------------------------|
| Wheel Diameter | 100mm |
| Wheel Width | 27mm |
| Wheel Bearing | Wheel With Plain Bearing |
| Plate Size | 100 x 58mm |
| Bolt Hole Spacing | 82x40.5mm |
| Plate Hole | 8.5mm |
| Overall Height | 126mm |
| Hardness Of Tread | 80±5° Shore A |
| Load Capacity (Dynamic) | 70kgs |
| Load Capacity (Static) | 105kgs |
| Temperature | -20°C to +120°C |
| Fork Type | Rigid Caster |
| Stainless | N/A |
| Electrical Conductivity | N/A |
| Anti-Static | N/A |
| Weight | 0.66kgs |
| Standard | ISO22883 |

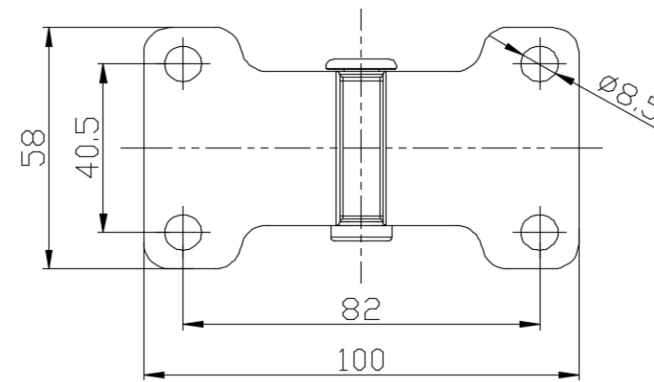
Advantages at a glance

| | |
|----------------------------|-----------|
| Rolling Resistance | ● ● ● ○ ○ |
| Operating Noise | ● ● ● ● ○ |
| Floor Surface Preservation | ● ● ● ● ○ |

Dimensions



Mounting



* For any deviation between metric and imperial spec, please refer to the metric spec.