

1121 Series 25



Rubber wheel Wheel diameter × Wheel width 100 × 27mm

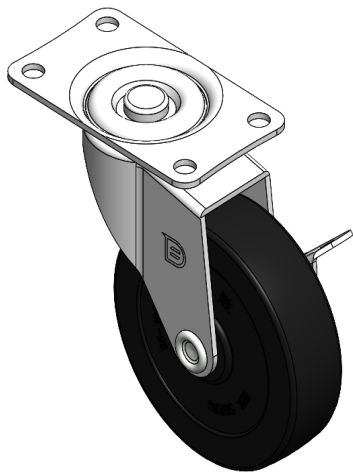
EAN

YJ-11210400064023

Casters with side brakes and locking system. Base plate with riveted stamped feet - hole spacing 82 x 40
Galvanized finish, base plate mounting
Thermoplastic wheel core with high-quality elastic rubber tread
Wheels - Tubular

Wheel surface: high-quality elastic rubber
Wheel core: Thermoplastic (PA6)

Product descriptions are for reference only. The actual product shall prevail.



Picture may differ from original product

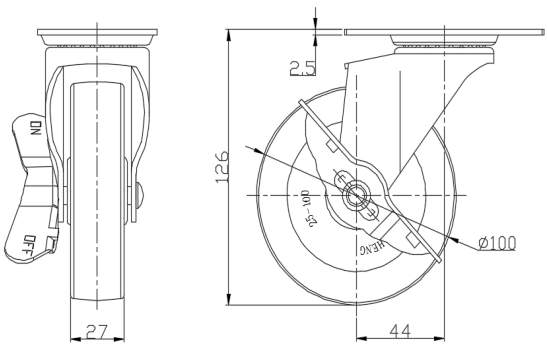
Technical Data

<input checked="" type="radio"/> Metric <input type="radio"/> Imperial	
Wheel Diameter	100mm
Wheel Width	27mm
Wheel Bearing	wheels with a central tube
Plate size	100 x 58mm
Base plate hole spacing	82 x 40mm
Plate hole	8.8mm
Offset	44mm
Swivel Interference	188mm
Overall height	126mm
Swivel Radius	94mm
Hardness of tread	95±5° Shore A
Load capacity (dynamic)	80kgs
Load capacity (static)	120kgs
Temperature	-20°C to +120°C
Stand Style	Single Side Strike
Stainless steel	N/A
Conductive	N/A
Anti	N/A
Weight	0.69kgs
Standard	ISO22883

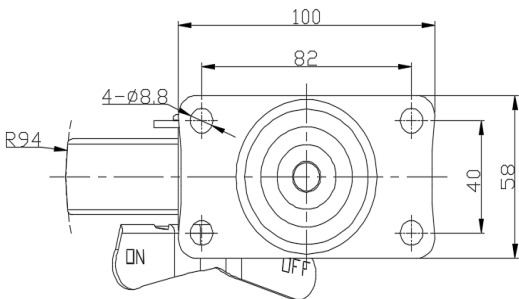
Advantages at a glance

Rolling Resistance	● ● ● ○ ○
Operating Noise	● ● ● ● ○
Floor Surface Preservation	● ● ● ● ○

Dimensions



Mounting



Drawings are for reference only and may differ from the product.

* For any deviation between metric and imperial spec, please refer to the metric spec.